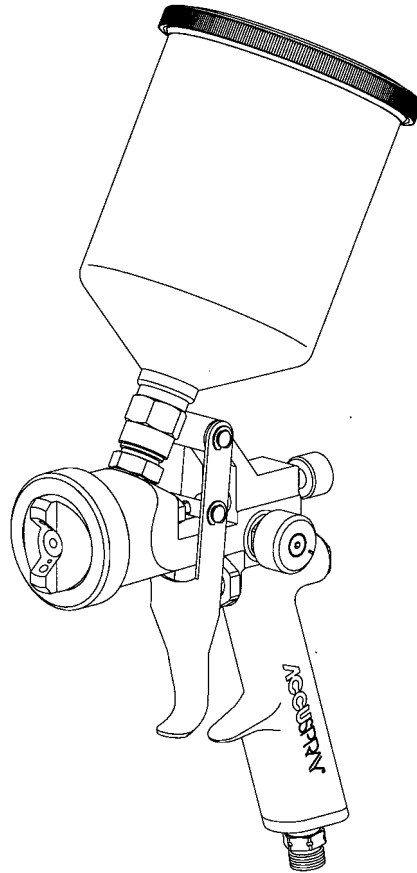




ISAAC Series HVLP Spraygun Owners Manual



Literature #SM-07-0803

This manual covers the 07, 07HS, and 07HSP Spraygun models.

Gun Overview

Accuspray's Series 07 Gravity Gun was designed from the inside out for HVLP use to deliver performance without compromise. This means achieving compliance with environmental regulations and delivering the fastest production speeds; generating substantial paint savings and producing a first class finish.

The series 07 can connect directly to your high-pressure air hoses so set-up is fast and easy. With a reducer built right into the gun, high-pressure air is decompressed inside the gun. The series 07 has a 4.3:1 reduction ratio. This means that an inlet pressure of 43psi will deliver 10psi at the air cap.

With proper use and maintenance, your Accuspray Gun will deliver long trouble-free life and first class results.

Table of Contents

Topic	Page Number
Contents-Unpacking.....	3
General Safety / Safety Precautions	4
Set-up	5
Hand Gun Use.....	7
Maintenance.....	10
Component Replacement.....	11
Overview 07HS Propack.....	14
Products and Accessories: Needle Tips/Nozzles and Air Caps.....	15
Products and Accessories: Maintenance Kit.....	16
Hand Gun Parts Identification: Mini Regulator and Gauge.....	17
Hand Gun Parts Identification: 07 Series.....	18
Hand Gun Parts Identification 07HS Series.....	19
Hand Gun Parts Identification 07HSPSeries.....	20
Gravity Cup Assembly.....	21
Troubleshooting.....	22

Contents

Unpacking

Remove the components from the box. Inspect for concealed damage and missing items. If you discover any damage or missing pieces, contact your distributor immediately. Your Accuspray **07 Series** spray gun package should include:

- 07 Series Spraygun
- Gravity Cup (600ml or 1000ml)
- Gun Wrench
- Tube of Gun Lube
- Cleaning Brush
- Wall Mount Bracket

07 Series Spraygun

The 07 series gravity spraygun is for use with compressed air system. This superior performing spraygun offer the ultimate in the ease of use. Simply connect the gun to your existing high-pressure regulator air hose, and cup or fluid hose.

07HS Series Spraygun

The 07HS series gravity spraygun offers the same features and benefits of the 07 series with the added benefit of high speed. This spraygun is ported for more speed and working with high solids bases and clears.

07HSP Series Spraygun

The 07HSP series gravity spraygun offers the same features and benefits of the 07HS series with addition of a pressurized cup for even greater speed.

General Safety

Accuspray's HVLP equipment is for professional use only. Hazards can occur from equipment misuse. Any misuse of the equipment or accessories, such as over pressurizing, modifying parts, using incompatible chemicals and fluids, or using worn or damaged parts can cause serious bodily injury, fire, explosion or property damage. **Please read and follow all General Safety, Safety Precautions and User Instructions.**

Never point a spray gun at anyone or any part of the body. Never place your hand or fingers in front of a spray nozzle.

Never try to stop or deflect leaks with your hand or body.

Never alter or modify any part of this equipment. A malfunction could result.

Check your spray equipment regularly. Repair or replace worn or damaged parts immediately.

Always use Accuspray HVLP replacement parts. Only these parts were designed to work with your equipment.

Safety Precautions

Solvents and coatings can be highly flammable to combustible, especially when sprayed. Adequate exhaust must be provided to keep the air free of accumulations of flammable vapors. Smoking must never be allowed in spray areas. Fire extinguishing equipment must be present in the spray area.

Certain materials may be harmful if inhaled or if there is contact with the skin. Follow the requirements of the Material Safety Data Sheet supplied by the coating material manufacturer. Use a respirator whenever there is a chance of inhaling sprayed material. The mask must be compatible with the material being sprayed and its concentration. Safety equipment must be NIOSH approved.

Certain solvents containing Methylene Chloride and Trichloromethane are not chemically compatible with aluminum or zinc. The solvents reaction can become violent and explosive. If you are in doubt whether a coating or cleaning material is compatible, contact your material supplier.

Improper operation or maintenance may create a hazard. Personnel must be given training. Instructions and safety precautions must be read and understood. Comply with your local, state, and national codes governing ventilation, fire protection, operation, maintenance, and housekeeping.

Set-up

Gun/Cup Installation (650ml Plastic) Screw the cup onto fluid passage fitting, and tighten at the cup hex nut with your gravity cup gun wrench. With material in the cup, tighten the lid securely. **MAKE SURE ALL FOUR THREADS ARE ENGAGED.** Align the cup lid with the threads. Then, rotate the lid until snug. With the gun in a horizontal position, swish the material inside the cup around. Look for seepage where the lid meets the cup. If any seepage appears, check that the lid is fully engaged to cup.

Warning:

The composite gravity cup will swell when overexposed to solvents. To prevent this, do not use a gun washer. Instead, place a small amount of solvent in the cup, swirl solvent around, and wipe dry. This will also minimize staining. If a gun washer is used, promptly remove the cup and lid and wipe dry. Do not soak in solvent. Limit the time in the gun washer to 5 minutes.

If the cup or lid is swollen and the lid has not been fully engaged to the cup, the cup may leak. To "un-swell" the cup, allow it to air dry. Depending on the severity of the overexposure, the drying time can take up to a week. Use a replacement cup while the cup is drying.

Gun/Cup Installation (600ml & 1000ml Aluminum)

Caution: Do not use solvents containing Methylene Chloride and Trichloromethane with this cup. They are not chemically compatible with aluminum.

Before Spraying: Wipe the cup interior with a soft cloth that has been dampened with an appropriate solvent. Wipe the lid completely, including the area around the sealing barbs.

Attaching the Cup: Hold and spin the cup closer to the bottom (fitting end) of the cup. Grasping the cup at the top and applying pressure may cause the cup to go out of round, affecting the lid seal. Tighten the cup at the fitting with your gravity gun wrench.

Cleaning: The cup may be cleaned in a gun washer or wiped clean. Do **not** clean the lid in a gun washer. Wipe clean only. Note: The lid is a wear part. The sealing threads and gasket, in time, will wear. Order Part #97-261 when necessary.

When Spraying

It is very important to keep the breather hole, located on both cup lids, free of obstructions. Air must be able to flow in.

Set-Up Continued

Attaching Your High-Pressure Air Hose When attaching your high pressure air hose (5/16" or larger) to the gun, use your gravity gun wrench, or a 9/16" open end wrench to apply counter force to the air inlet fitting while tightening (or removing) your high pressure air hose with a 5/8" open end wrench. This will prevent damage to the air inlet tube inside the gun.

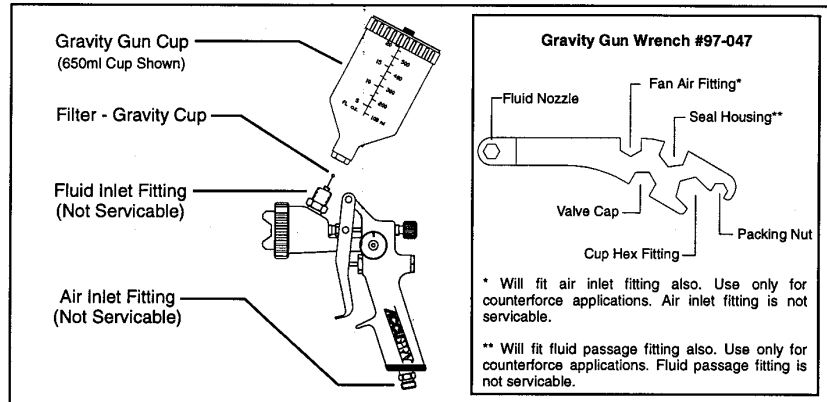
High-Pressure Air The high-pressure air into the gun is decompressed inside the gun on average, at approximately a 4.3 to 1 reduction ratio. The high-pressure regulator setting depends on the atomizing set and air cap selected, and the desired result. See **Guidelines for Setting Inlet Pressure** on page 8.

Caution:

The fluid inlet fitting, and the air inlet fitting are not removable components. **Do not** remove or attempt to service the fluid inlet fitting or the air inlet fitting. If you wish to change to a quick disconnect configuration at the air inlet, adapt to the air inlet fitting and always apply counterforce to the air inlet fitting while tightening (or removing) a fitting or hose.

First Time Use

Spray solvent through the gun before using it for the first time. This will remove any contaminants that may have entered the fluid passage.



Hand Gun Use

Gun Adjustments

The fan size is regulated by the fan adjustment knob located on the side of the gun. With the gun pointed at your target, turn the knob toward you until it stops. This is the fully closed position. Turning the knob away from you increases the fan air.

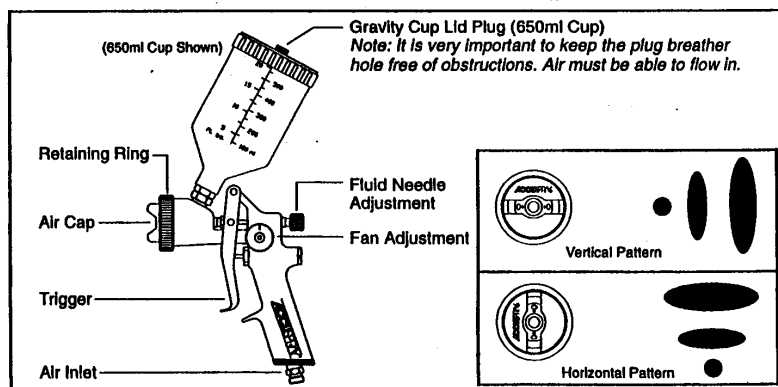
The fluid flow is controlled by the needle adjustment screw located at the rear of the gun. Turning the knob clockwise will close down the fluid flow, minimizing needle travel (trigger pull). Turning the knob counterclockwise will increase the fluid flow, maximizing needle travel (trigger pull).

With the first thread of the needle adjustment screw showing from the gun body (approximately 4 counterclockwise turns from closed) you will have full needle travel.

Please note that, when closing down the needle adjustment screw, when the needle travel has stopped, further tightening will damage the needle tip and will not aid in adjustment.

As a starting point, open the fan adjustment knob between 1/4 and 1/2 turn. Set the needle adjustment screw so that the first thread is showing from the gun body. This will give you approximately an 8 inch wide pattern, at 8 inches from your target (depending on air cap & pressure setting). Fine-tuning of these adjustments will be based on your material and technique.

A small round pattern can be achieved by closing down the fan air adjustment, triggering the gun lightly, and maintaining a distance of 2 to 4 inches from your target.



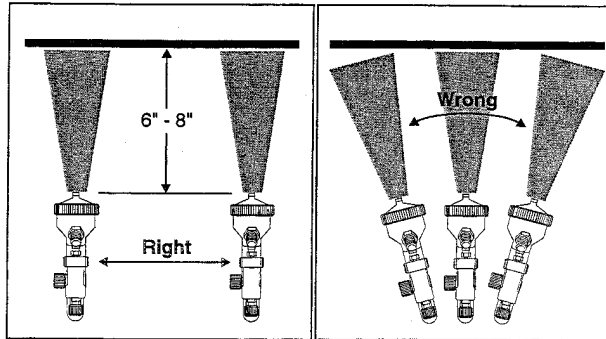
Gun Use - Continued

Spray Technique

Proper spray technique is very important to achieve a good finish. Always spray at a distance of 6 to 8 inches away from your target. Keep the gun parallel to your target throughout the entire pass. More detailed spraying can be done with the gun as close as 1 inch from the target. Make sure your wrist remains firm during each pass.

Trigger the gun only after your pass begins, and release the trigger before stopping your motion. Do not angle the gun upward or downward while spraying. Angled spraying will develop an uneven paint buildup. Overlap your passes approximately 50% for an even finish.

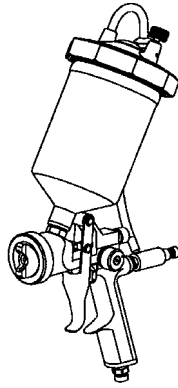
Always be certain to thin your material with the proper solvent, and to follow the recommendations of the material's manufacturer.



Guidelines for Setting Inlet Pressure Your 07 series spraygun requires lower than expected inlet pressures to produce excellent atomization and desired speed of application. The chart below shows recommended starting points for setting inlet pressures at the gun.

<u>Typical Application</u>	<u>Atomizing Set</u>	<u>Inlet Pressure (At Gun)</u>
Base Coats	.061/#707	25 - 30psi
Medium Solids Bases	.061/#705	25 - 30psi
High Solids Clears	.072/#706	35 - 43psi
Single Stages	.072/#707	30 - 35psi
Primers	.051/#709	25 - 30psi
Stains	.051/#705	25 - 30psi

Hand Gun Use – 07HSP



Operating Instructions

To increase fluid pressure, turn air regulator located at the rear of the spray gun clockwise. Note: Every 1-1/8 turn equals 1psi of fluid pressure. When the adjusting screw is all the way in, fluid pressure is at its maximum of 10psi.

To decrease fluid pressure, open fluid cup lid relief screw, turn air regulator counter-clockwise, close fluid cup lid relief screw, and then adjust fluid pressure to desired setting.

Note: Most applications will usually require no more than 3-6psi.

Caution

Do not use metal or sharp tools to clean fluid cup for it will scratch the Teflon lined non-stick coating.

Use gravity gun wrench to tighten fluid cup to spraygun fluid fitting.

07HSP Accessories

Pressure Relief Screw #94-035
Fluid Cup Lid Assembly #97-125
Cup Lid O-Ring #UH-1377/3
Check Valve Assembly 650ml #97-131
Check Valve Assembly 850ml #97-132
Teflon Lined Pressurized Gravity Cup Assembly 650ml #97-121
Teflon Lined Pressurized Gravity Cup Assembly 850ml #97-122
Delrin Retaining Ring #91-043

***07HSP also available in the 07HSP-Propack which includes pressurized cup, bracket, regulator and extra tip/nozzle and air cap set.**

Daily Maintenance

Gun Cleaning

Your gun is made from aluminum, and it contains aluminum components. Certain solvents containing Methylene Chloride and Trichloromethane are not chemically compatible with aluminum. If you are in doubt whether a chemical coating is compatible, contact your material supplier.

It is very important to clean your gravity gun and cup after every use. Adding a small amount of solvent to a clean cup and triggering the gun can clean the fluid passage. Do this with the air cap removed so you can recapture the spent solvent for proper disposal.

The air cap should be cleaned by soaking or by using a soft brush. Never use a hard tool that may damage the air cap holes. Clean the air cap holes with a wooden tooth pick or pipe cleaner. The smallest amount of damage to the air cap holes can affect the spray pattern.

Your gun and cup may be cleaned in a gun washer by removing the cup and filter, and inverting the gun. Limit the time in a gun washer to a maximum of 5 minutes. Some solvent may enter through the air inlet fitting. This will not damage the gun, and the excess solvent may be blown out with air.

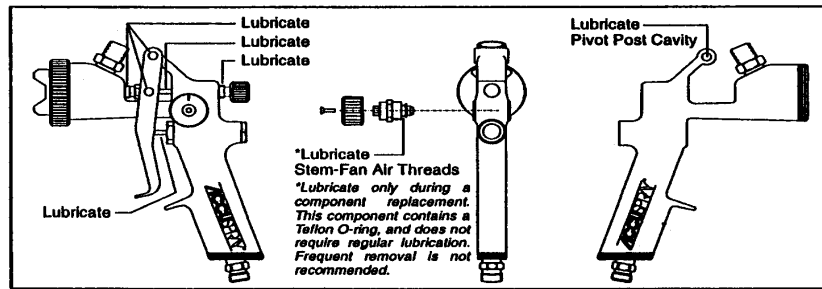
Cup Cleaning

It is also very important to clean your cup after every use. Before removing your cup lid from the cup, be sure to relieving the cup pressure through the relief valve. Unscrew the cup lid and remove the remaining material from the cup. Rinse the cup with a suitable solvent.

Gasket Replacement

Remember that the cup is a pressure cup. The gasket must be in good condition. The lid must be firmly seated to the cup to prevent air and fluid leakage. Inspect the gasket, lube the gasket channel, and pay attention to the fit with each use. Replace the gasket when necessary.

Lubrication After every cleaning of the gun, you must lubricate the moving components. Cleaning washes away the lubricants that protect the friction points.



Component Replacement

With regular cleaning and lubrication, complete disassembly of your spray gun should seldom be required. When it becomes time for a complete overhaul, or a part requires replacement, please follow these instructions.

General Close your high-pressure air source down. Remove your high-pressure air hose remembering to always apply counterforce to the air inlet fitting (see *Set-up, Attaching Your High Pressure Air Hose*). Dispose of any paint in your cup, and flush and clean your gun (see *Daily Maintenance, Gun Cleaning*).

Fluid Nozzle, Needle Tip & Needle Shaft

With the retaining ring and air cap removed, unscrew the fluid nozzle using your gravity gun wrench #97-047. Pull and hold the trigger during this to retract the Delrin needle tip. Using the gun wrench prevents scoring of the fluid passage and gun body casting during replacement.

Release the trigger and unscrew the delrin needle tip. You can replace the needle tip at this point, remembering to retract the needle before reinstalling the fluid nozzle, or proceed with further disassembly.

To remove the needle shaft, unscrew and remove the needle adjustment screw and the needle adjustment spring. You may now pull the needle out of the gun with just your fingers. If the needle does not pull out freely, loosen the packing nut slightly. Your gun wrench will accomplish this with the trigger still attached to the gun.

Trigger Removal

To remove the trigger, you must have first removed the fluid needle as described above. With the fluid needle removed, locate the two E-rings on the right side of the trigger. Slide off the two E-rings with a small flat-blade screwdriver. The pivot pin (upper), and the trigger pin (lower) will now slide out to the left side of the gun, and the trigger is free to be removed. Note that left and right orientation is not critical at reassembly.

Packing Nut Spacer and Packing

Unscrew and remove the needle adjustment screw and the needle adjustment spring. Pull the needle out of the gun with your fingers. If the needle does not pull out freely, loosen the packing nut. Remove the packing nut with your gun wrench. The compression spring, spacer, needle guide, and seal should fall freely from gun. If you experience difficulty with removal, remove trigger pin and firmly tap the rear of the gun on a block of wood. Then remove the seal with an o-ring pick or similar narrow instrument. **See Figure 1.**

Component Replacement-Continued

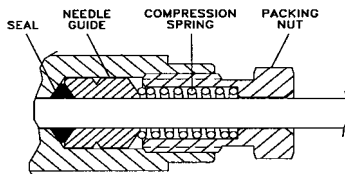
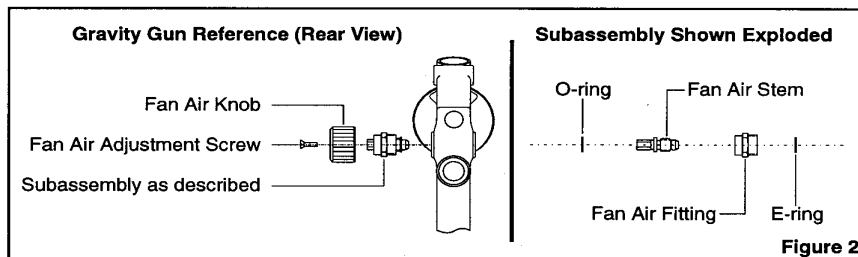


Figure 1

Fan Air Knob

To remove the fan air knob, and to lubricate the fan air stem threads, have ready a 3/64" hex key. Unscrew and remove the fan air adjustment screw using the hex key, and lift the fan air adjustment knob. Using your gun wrench, unscrew and remove the fan air fitting from the gun body. This will lift out from the gun body as an assembly. The threads of the fan air stem may now be lubricated with gun lube. **See Figure 2.**



The subassembly may now be disassembled by first removing the E-ring from the fan air stem with a small, flat-blade screwdriver. With the E-ring removed, back out the fan air stem from the fan air fitting. The O-ring may now be removed and replaced, and the sub-assembly can be reassembled and placed back into the gun body.

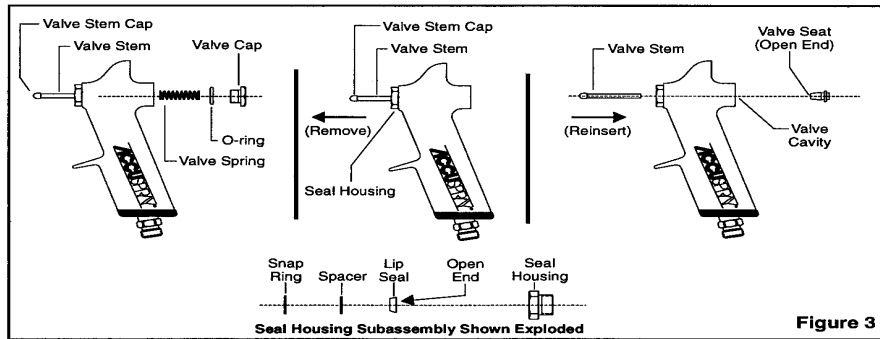
Valve Rebuild

Valve rebuild is a 2 step procedure. Step one involves removal and replacement of the valve spring. You would wish to do this if you were experiencing a sluggish trigger return. To remove the valve spring, unscrew and remove the valve cap with your gun wrench. At this stage you can also remove and replace the o-ring for the valve cap.

Step two involves completely removing the valve from the gun body. Before you can proceed, the needle shaft and trigger must be removed. We will assume that the valve cap, valve spring, and the o-ring have already been removed.

Component Replacement-Continued

Grasp the valve stem and pull it forward. Note the removal of the valve stem cap is not required. The valve stem will pull out from the valve seat and out of the gun through the seal housing. The valve seat can be removed from the gun by gently reinserting the valve stem into the seal housing to “unseat” the valve seat. The valve seat will drop out of the valve cavity. **See Figure 3.**

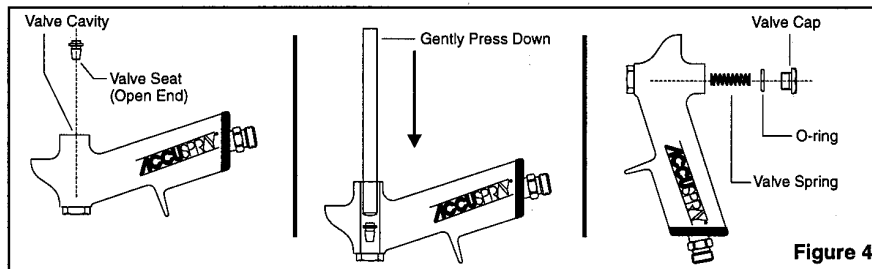


Seal Housing Replacement

Using your gun wrench, unscrew and remove the seal housing. The seal housing subassembly contains a snap ring. This is the only area that a special tool is required. The snap ring requires a size 100 tool. With the snap ring removed, lift out the spacer, lip seal, and clean the seal housing cavity.

Note the orientation of the lip seal, the open end of the lip seal is to be placed into the seal housing. Pack the seal housing with petroleum jelly. The lip seal will be properly installed when you feel a positive lock, and its resting level. Reinstall the spacer and snap ring. **See Figure 3.**

Drop a new valve seat into the valve cavity open end down. Gently press down on the valve seat to align it in the cavity. A long thin object such a pen works well for this. Next re-install the o-ring, valve spring, and valve cap. **See Figure 4.**



Component Replacement-Continued

Next, gently push the valve stem back into the valve seat through the seal housing. You will know that the installation is correct and complete when the spring return action is smooth. As a final seating procedure, depress the valve stem as far back as it will go, and then release it. Lubricate the valve stem with gun lube.

Overview Series 07HS Propack

The Isaac Series 07 system was designed for maximum operator flexibility in adjusting pressure where coatings are frequently changed and slight variations in atomizing pressures are used. The mini-regulator and gauge assembly provides precision control of low pressure atomizing air.

Series 07HS Propack Includes:

- 93-103 Mini-regulator and gauge assembly
- Series 07HS Gravity Gun
- 1000ml Aluminum Cup
- Extra Atomizing Set

07HS Propack Set-up

The 93-103 mini-regulator and gauge assembly is shipped assembled and attached to your gun. Attach your high-pressure inlet fitting to the inlet of the 93-103 (wrap threads in Teflon tape).

Attach your high-pressure air hose (5/16" I.D. or larger) from your existing high-pressure regulator and filtered air source to the high-pressure inlet fitting now installed on the 93-103.

The inlet pressure to the 93-103 should be at least 90 psi in order to have maximum working pressure. Adjust the 93-103 for the desired atomizing pressure 0 to 43 psi with the gun triggered.

Atomizing Pressure

Set the **atomizing pressure** on the mini-regulator **before** spraying. Always set atomizing pressure with the gun trigger pulled so air is flowing out the air cap.

Note: Increasing the air pressure will give finer atomization. Decreasing the air pressure will give less atomization. However, before increasing the atomizing pressure, work with the fan and fluid controls. This will insure maximum paint savings and highest quality finishes.

If you feel the gun is spraying too much material, try closing down the fluid adjustments a little at a time to achieve the desired finish. Do this before increasing air pressure. *Increasing the air pressure increases the airflow.*

Needle Tips/Nozzles and Air Caps

The atomizing set in your gun was selected for its performance with many frequently used coatings. At the same time, different sizes of needle tips/nozzles or air caps can improve the results with coatings of different viscosities.

General Guidelines

- Light viscosity coatings will usually require a smaller nozzle.
- To adjust speed of application, the nozzle size can be changed. Smaller nozzles-slower. Larger nozzles-faster
- To adjust the degree of fine finish, the air cap size can be changed. Smaller Air Caps-Finer finishes.

I Kits-These atomizing sets include popular *low, medium and high-solids* delrin tip, stainless steel nozzle and aluminum air cap combinations.

Choose your I Kit based on viscosity of material being sprayed. For example, light viscosity coatings work best with smaller tip and fluid nozzle, larger tip and fluid nozzles increase application speed.

PART NUMBER	TIP/ NOZZLE SIZE	AIR CAP	RECOMMENDED USE
I Kit-04	1.5mm (.061)	705	Medium Solids Base
I Kit-06	1.5mm (.061)	707	Low Solids Bases & Clears
I Kit-09	1.8mm (.072)	706	High Solids Bases
I Kit-10	1.8mm (.072)	707	Single Stage Applications
I Kit-12	1.8mm (.072)	709	For Primers & Sealers
I Kit-24	High Solids 1.5mm(.061U)	725	Medium Solids Clears
I Kit-29	High Solids 1.8mm(.072U)	726	High Solids Clears
I Kit-32	High Solids 1.1mm(.043U)	726	Light Viscosity Material
I Kit-33	High Solids 1.3mm(.051U)	726	Light Viscosity Material
I Kit-200	High Solids 1.5mm/1.8mm	725 & 726	Complete High Solids Spraying

*For identification purposes, the U (underline) denotes high solids set-ups, which should be used with the 725 or 726 air caps.

Needle Tips/Nozzles and Air Caps

Clears atomizing sets (for gun model #'s: 07 and 07HS) for spraying the most difficult-to-atomize medium and high solids clears consist of:

Part#	Description
97-019-7xx	Delrin Tip
97-078-7xx	High Solids Nozzle
97-077-725	725 High Solids Air Cap
97-077-726	726 High Solids Air Cap

Note: For identification of the part numbers on the above nozzles are underlined. For best results, #97-078-7xx nozzles should be used with #97-077-72x high solids air caps. Technical Tip: If these atomizing sets are too fast, cut back the inlet air pressure.

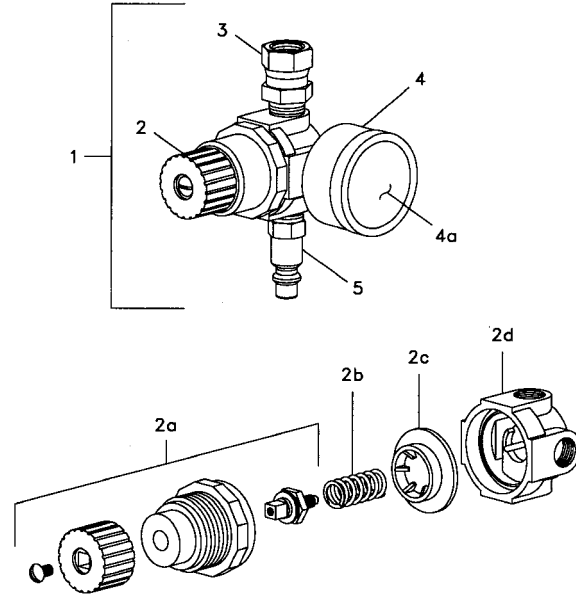
Standard atomizing sets (for gun model #'s: 07 and 07HS; etc.) consist of:

Part#	Description
97-019-7xx	Delrin Tip
97-010-7xx	Standard Gravity Nozzle
97-009-7xx	Standard Gravity Air Cap (Sizes: 705, 706, 707, 708, 709, 710)

Maintenance Kits and Accessories

07 Series Maintenance Kit #97-049
Mini-Regulator #93-103
200ml Cup Assembly #97-247
600ml Cup Assembly #97-257
1000ml Cup Assembly #97-258
650ml Plastic Cup Assembly #97-044
Gravity Gun Wrench #97-047
Gun Lube #91-120
Wall Mount Bracket #97-124
Pressurized Gravity Conversion Kit #97-135
Cleaning Brush #SH-480
Delrin Retaining Ring #91-043
Complete Brush Cleaning Kit #91-470

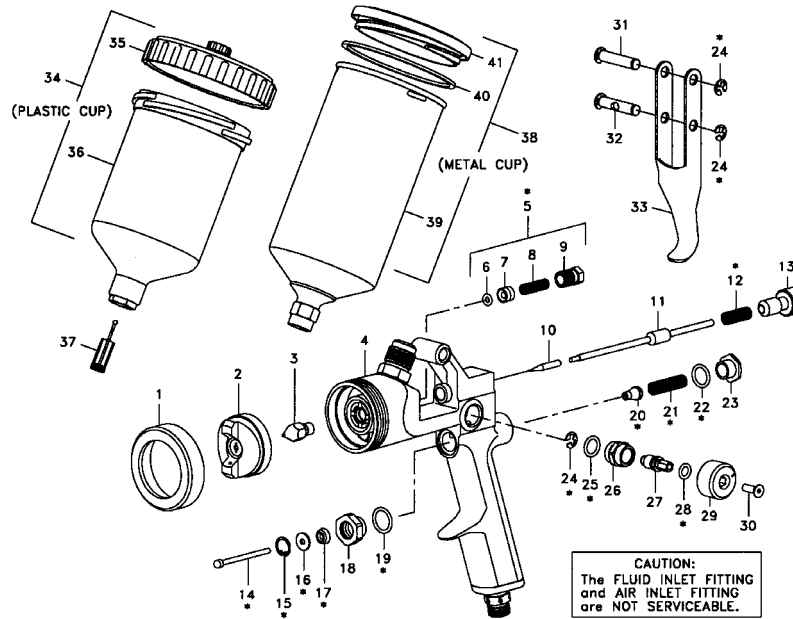
Parts Identification Mini-Regulator/Gauge (93-103)



ITEM	PART No.	DESCRIPTION
1	93-103	AIR REGULATOR ASSEMBLY
2	93-101	0-125 PSI AIR REGULATOR
2a	93-026	BONNET ASSEMBLY
2b	93-073	ADJUSTMENT SPRING
2c	93-028	DIAPHRAGM
2d	93-104	AIR REGULATOR BASE
3	UH-1032	SWIVEL FITTING
4	93-102	0-160 PSI AIR GAUGE
4a	93-036	REPLACEMENT GAUGE LEN
5	80-936	AIR INLET QUICK-DISCONNECT

Caution: Use of wall mount and coalescing filters are highly recommended so that only clean air is delivered to the 93-103 and the gun.

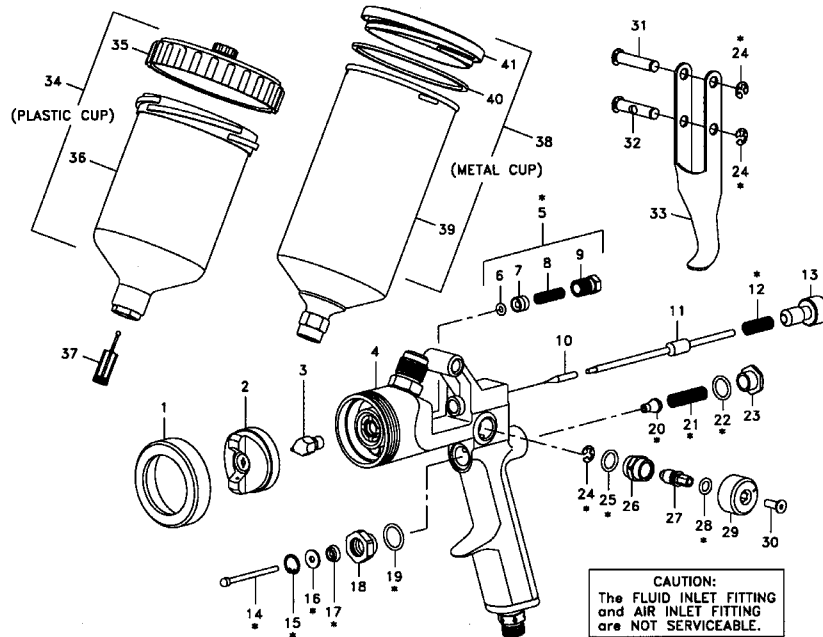
07 Series Hand Gun – Parts Identification



ITEM	PART No.	DESCRIPTION
1	91-043	RETAINING RING
2	97-009-7xx	AIR CAP
3	97-010-7xx	FLUID NOZZLE
4	97-052	SPRAYGUN SUB-ASSEMBLY
5	91-200	SELF-ADJUSTING PACKING KIT
6	UH-1405/10	O-RING (PACK OF 10)
7	91-202/2	NEEDLE GUIDE (PACK OF 2)
8	91-199/3	COMPRESSION SPRING (PACK OF 3)
9	91-201	PACKING NUT
10	97-019-7xx/4	NEEDLE TIP (PACK OF 4)
11	97-020	NEEDLE SHAFT
12	LG-27/5	SPRING (PACK OF 5)
13	97-023	ADJUSTMENT SCREW
14	97-155	VALVE STEM ASSEMBLY
15	UH-1107/10	SNAP RING (PACK OF 10)
16	97-026/5	SPACER (PACK OF 5)
17	97-027/3	LIP SEAL (PACK OF 3)
18	97-029	SEAL HOUSING
19	UH-842/3	O-RING (PACK OF 3)
20	97-056/3	VALVE SEAT (PACK OF 3)
21	97-032/5	VALVE SPRING (PACK OF 5)
22	UH-1106/5	O-RING (PACK OF 5)
23	97-034	VALVE CAP
24	UH-1108/3	E-CLIP (PACK OF 3)

ITEM	PART No.	DESCRIPTION
25	UH-647/10	O-RING (PACK OF 10)
26	97-043	FAN AIR HOUSING
27	97-041	VALVE STEM
28	UH-1111/5	O-RING (PACK OF 5)
29	97-040	FAN AIR KNOB
30	UH-B31/6	SCREW (PACK OF 6)
31	97-038	TRIGGER PIVOT PIN ASSEMBLY
32	97-037	TRIGGER PIN ASSEMBLY
33	97-036	TRIGGER
34	97-044	650ml GRAVITY CUP ASSEMBLY
35	97-045	650ml GRAVITY CUP LID
36	97-018	650ml GRAVITY CUP
37	97-016/5	650ml GRAVITY CUP FILTER
	97-247	0.2L GRAVITY CUP ASSEMBLY
38	97-257	0.6L GRAVITY CUP ASSEMBLY
	97-258	1.0L GRAVITY CUP ASSEMBLY
	97-248	0.2L GRAVITY CUP
39	97-259	0.6L GRAVITY CUP
	97-260	1.0L GRAVITY CUP
40	97-233/2	0.2L CUP LID GASKET
	97-262/2	0.6L & 1.0L CUP LID GASKET
41	97-267	0.2L CUP LID/GASKET
	97-261	0.6L & 1.0L CUP LID/GASKET
*	97-049	SPRAYGUN REBUILD KIT

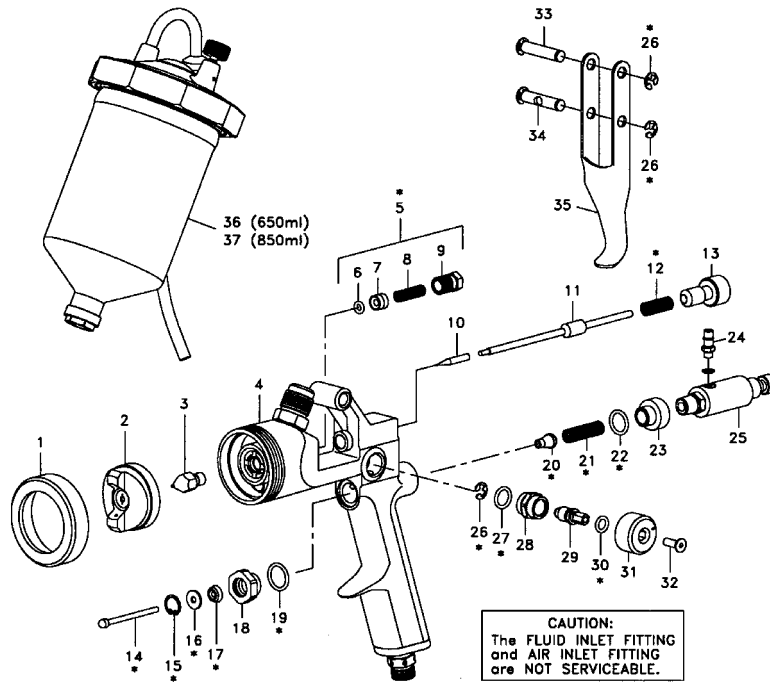
07HS Series Hand Gun- Parts Identification



ITEM	PART No.	DESCRIPTION
1	91-043	RETAINING RING
2	97-077-7xx	AIR CAP
3	97-078-7xx	FLUID NOZZLE
4	97-090	SPRAYGUN SUB-ASSEMBLY
5	91-200	SELF-ADJUSTING PACKING KIT
6	UH-1405/10	O-RING (PACK OF 10)
7	91-202/2	NEEDLE GUIDE (PACK OF 2)
8	91-199/3	COMPRESSION SPRING (PACK OF 3)
9	91-201	PACKING NUT
10	97-019-7xx/4	NEEDLE TIP (PACK OF 4)
11	97-020	NEEDLE SHAFT
12	LG-27/5	SPRING (PACK OF 5)
13	97-023	ADJUSTMENT SCREW
14	97-155	VALVE STEM ASSEMBLY
15	UH-1107/10	SNAP RING (PACK OF 10)
16	97-026/5	SPACER (PACK OF 5)
17	97-027/3	LIP SEAL (PACK OF 3)
18	97-029	SEAL HOUSING
19	UH-842/3	O-RING (PACK OF 3)
20	97-056/3	VALVE SEAT (PACK OF 3)
21	97-032/5	VALVE SPRING (PACK OF 5)
22	UH-1106/5	O-RING (PACK OF 5)
23	97-034	VALVE CAP
24	UH-1108/3	E-CLIP (PACK OF 3)

ITEM	PART No.	DESCRIPTION
25	UH-647/10	O-RING (PACK OF 10)
26	97-043	FAN AIR HOUSING
27	97-041	VALVE STEM
28	UH-1111/5	O-RING (PACK OF 5)
29	97-040	FAN AIR KNOB
30	UH-831/6	SCREW (PACK OF 6)
31	97-038	TRIGGER PIVOT PIN ASSEMBLY
32	97-037	TRIGGER PIN ASSEMBLY
33	97-036	TRIGGER
34	97-044	650ml GRAVITY CUP ASSEMBLY
35	97-045	650ml GRAVITY CUP LID
36	97-018	650ml GRAVITY CUP
37	97-016/5	650ml GRAVITY CUP FILTER
	97-247	0.2L GRAVITY CUP ASSEMBLY
38	97-257	0.6L GRAVITY CUP ASSEMBLY
	97-258	1.0L GRAVITY CUP ASSEMBLY
	97-248	0.2L GRAVITY CUP
39	97-259	0.6L GRAVITY CUP
	97-260	1.0L GRAVITY CUP
40	97-233/2	0.2L CUP LID GASKET
	97-262/2	0.6L & 1.0L CUP LID GASKET
41	97-267	0.2L CUP LID/GASKET
	97-261	0.6L & 1.0L CUP LID/GASKET
*	97-049	SPRAYGUN REBUILD KIT

07HSP Series Hand Gun- Parts Identification



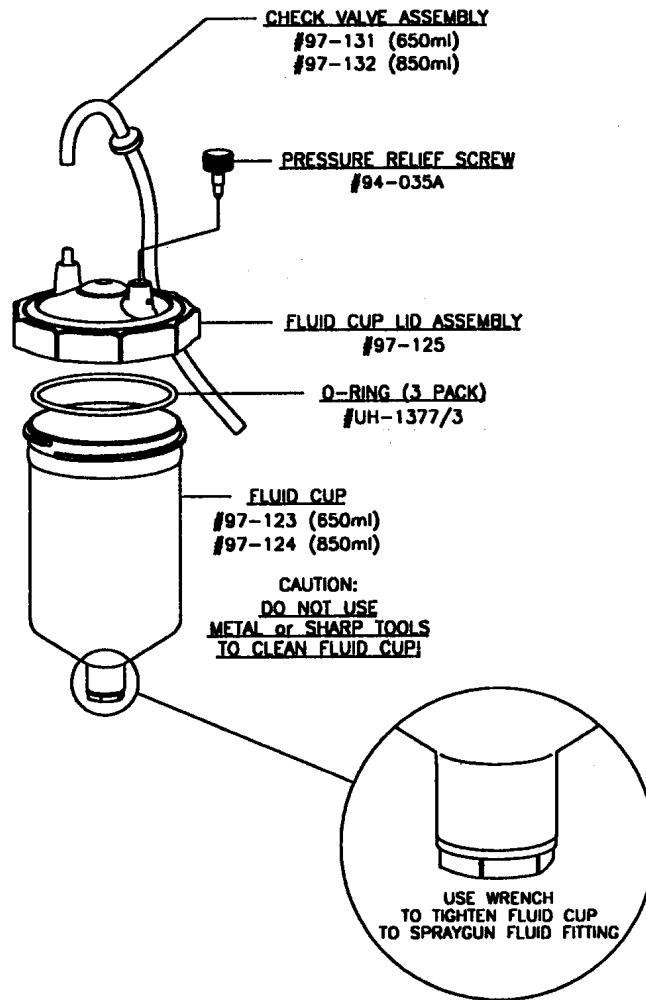
ITEM	PART No.	DESCRIPTION
1	91-043	RETAINING RING
2	97-077-7xx	AIR CAP
3	97-078-7xx	FLUID NOZZLE
4	97-090	SPRAYGUN SUB-ASSEMBLY
5	91-200	SELF-ADJUSTING PACKING KIT
6	UH-1405/10	O-RING (PACK OF 10)
7	91-202/2	NEEDLE GUIDE (PACK OF 2)
8	91-199/3	COMPRESSION SPRING (PACK OF 3)
9	91-201	PACKING NUT
10	97-019-7xx/4	NEEDLE TIP (PACK OF 4)
11	97-020	NEEDLE SHAFT
12	LG-27/5	SPRING (PACK OF 5)
13	97-023	ADJUSTMENT SCREW
14	97-155	VALVE STEM ASSEMBLY
15	UH-1107/10	SNAP RING (PACK OF 10)
16	97-026/5	SPACER (PACK OF 5)
17	97-027/3	LIP SEAL (PACK OF 3)
18	97-029	SEAL HOUSING
19	UH-842/3	O-RING (PACK OF 3)

ITEM	PART No.	DESCRIPTION
20	97-056/3	VALVE SEAT (PACK OF 3)
21	97-032/5	VALVE SPRING (PACK OF 5)
22	UH-1106/5	O-RING (PACK OF 5)
23	97-130	REGULATOR ADAPTOR
24	UH-1348	AIR PRESSURE FITTING
25	97-114	AIR PRESSURE REGULATOR
26	UH-1108/3	E-CLIP (PACK OF 3)
27	UH-647/10	O-RING (PACK OF 10)
28	97-043	FAN AIR HOUSING
29	97-041	VALVE STEM
30	UH-1111/5	O-RING (PACK OF 5)
31	97-040	FAN AIR KNOB
32	UH-831/6	SCREW (PACK OF 6)
33	97-038	TRIGGER PIVOT PIN ASSEMBLY
34	97-037	TRIGGER PIN ASSEMBLY
35	97-036	TRIGGER
36	97-121	650ml GRAVITY CUP ASSEMBLY
37	97-122	850ml GRAVITY CUP ASSEMBLY
*	97-049	SPRAYGUN REBUILD KIT

07HSP Gravity Cup Assembly

TEFLON LINED PRESSURIZED GRAVITY CUP ASSEMBLY

#97-121 (850ml)
#97-122 (850ml)



Troubleshooting

Problem	Cause	Remedy
Bad Spray Pattern	Air Cap Clogged	Soak in Thinner
	Nozzle Clogged	Appropriate Solvent
	Bent Fluid Needle	Replace Fluid Needle
Blistering	Moisture on Surface	Clean Surface
	Wrong Solvent	Check Solvent
	Coats Not Compatible	Check Compatability
	Insufficient Dry Time	Longer Dry Time
Fish Eyes	Surface Too Cold	Warm Surface
	Air Contamination	Add Air Filtration
Heavy Middle Pattern	Silicone Contamination	Clean Surface W/ Solvent
	Too Much Pot Pressure	Reduce Fluid Pressure
Intermittent, Pulsating Spray	Not Enough Atomizing Pressure	Increase Atomizing Pressure
	Warm or Loose Packing	Tighten or Replace
Insufficient Fluid Flow, Pressure Feed	Low Fluid in Cup or Pot	Add Fluid
	Restriction in Fluid Line	Use 3/8" Fluid Hose
	Blocked Hose	Flush or Replace Hose
	Fluid Nozzle Too Small	Use Larger Needle/Nozzle
Coarse or Lumpy Surface	Low Fluid Pressure	Increase Fluid Pressure
	Dirt or Dust on Surface	Tack Wipe Before Spray
Mottled Looking Surface	Material is Contaminated	Change or Strain
	Coating Too Thin	Use Less Thinner
	Coats Too Wet	Reduce Fluid Flow
No Paint Flow	Improper Spray Technique	Hold Gun Parallel to Work
	Clogged Fluid Nozzle	Clean Fluid Nozzle
	Loss of Air Pressure	Check Hose, Cup Gasket
	Loss of Fluid Pressure	Out of Paint
	Clogged Air Passage	Clean With Solvent
	Restriction in Mat'l Hose	Flush With Solvent
Orange Peel	Clogged Check Valve	Replace Check Valve
	Paint Drying Too Fast	Use Proper Solvent
	Gun Too Far From Target	6 - 8 Inches is Ideal
Overspray is Excessive	Viscosity Too Heavy	Reduce with Solvent
	Gun Too Far From Target	6 - 8 Inches is Ideal
Pin-holing, Solvent Pops	Too Much Atomizing Air for Coating Being Sprayed	Reduce Atomizing Air
	Trapped Solvent	Apply Lighter Coats
	Improper Solvent	Check Coating Mfg.
Paint Leak	System Contaminated	Clean all Parts
	Wrong Needle Size	Replace
	Damaged/Worn Needle	Replace
	Loose Fluid Nozzle	Tighten or Replace
	Worn/loose Packing Nut	Tighten or Replace
Tilted Gun	Needle Not Closing	Packing Too Tight. Broken or Missing Needle Spring. Dried Paint on Needle.
		Do Not Tilt While Spraying

Troubleshooting-Continued

Problem	Cause	Remedy
Runs and Sags	Material Too Thin	Add Product
	Moving Gun Too Slow	Speed up, Smaller Nozzle
	Surface Too Cold	Warm Up Surface
	Too Much Product	Reduce Fluid flow
	Gun Too Close To Target	6 - 8 Inches is Ideal

Troubleshooting for the 93-103 Mini-Regulator

Problem	Cause	Remedy
Air Pressure Too High	Regulator sticking caused by dirt on valve body or seat or piston seat or improperly lubricated parts	Clean, replace and lubricate parts Install good air filter before main regulator and maintain it
Not Enough Pressure	Dirty filter	Replace filter element
	Air hose too small from high pressure wall mount regulator to gun mount HVLP regulator	Install larger air hose (5/16") to eliminate the restriction. 85-125 psi should be kept at the regulator inlet for full efficiency
	Insufficient line pressure	Increase pressure delivered to gun or shorten hose length
Regulator Doesn't Hold Pressure	Dirt from contaminated air is making diaphragm stick or solvents have attacked the seals	Use only clean filtered air to the mini-regulator. Do not place mini-regulator in a gun washer

Some Reminders:

If correcting a problem involves changing the fluid nozzle:

- Be sure to squeeze the trigger to retract the needle. This will prevent damaging the needle tip.

If it necessary to remove cup lid from the cup:

- Be sure to relive cup pressure through the relief valve.

When using the pressurized cup gun (07HSP), spraying a horizontal surface, the fluid may work itself into the tube. In order to reverse this flow, follow these instructions:

- Hold the gun upright
- Open the pressure relief valve screw (94-035A)
- Pull the trigger back just enough for air. This will push paint back into cup.
- When the tube is clear of fluid, re-close the pressure relief screw.
- If the tube has been coated, replace it before your next use.

To order additional copies of this manual, call Accuspray
Customer Service at 1-800-618-6860
Fax your request to (440) 498-9815.
Visit us online at www.accuspray.net.
Request Literature Number: SM-07-0803

LIMITED WARRANTY

Accuspray, (Accuspray Application Technologies, Inc.), warrants all equipment manufactured by and bearing its name to be free from defects in material and workmanship on the date of sale by an authorized Accuspray distributor to the original purchaser for use. As purchaser's sole remedy for breach of this warranty, Accuspray will, for a period of twelve months from the date of sale, repair or replace any part of the equipment proven defective.

This warranty does not cover, and Accuspray shall not be liable for any malfunction, damage, or wear caused by faulty installation, misapplication, abrasion, corrosion, inadequate or improper maintenance, negligence, accident, tampering, or substitution of non-Accuspray component parts. This warranty is conditioned upon the prepaid return of the equipment claimed to be defective for examination to verify the claimed defect.

A complete description of this warranty can be obtained by calling or writing Accuspray.

Accuspray is a registered trademark of
Accuspray Application Technologies, Inc.

All other products named in this publication are either
Trademarks or registered trademarks of their respective owners.