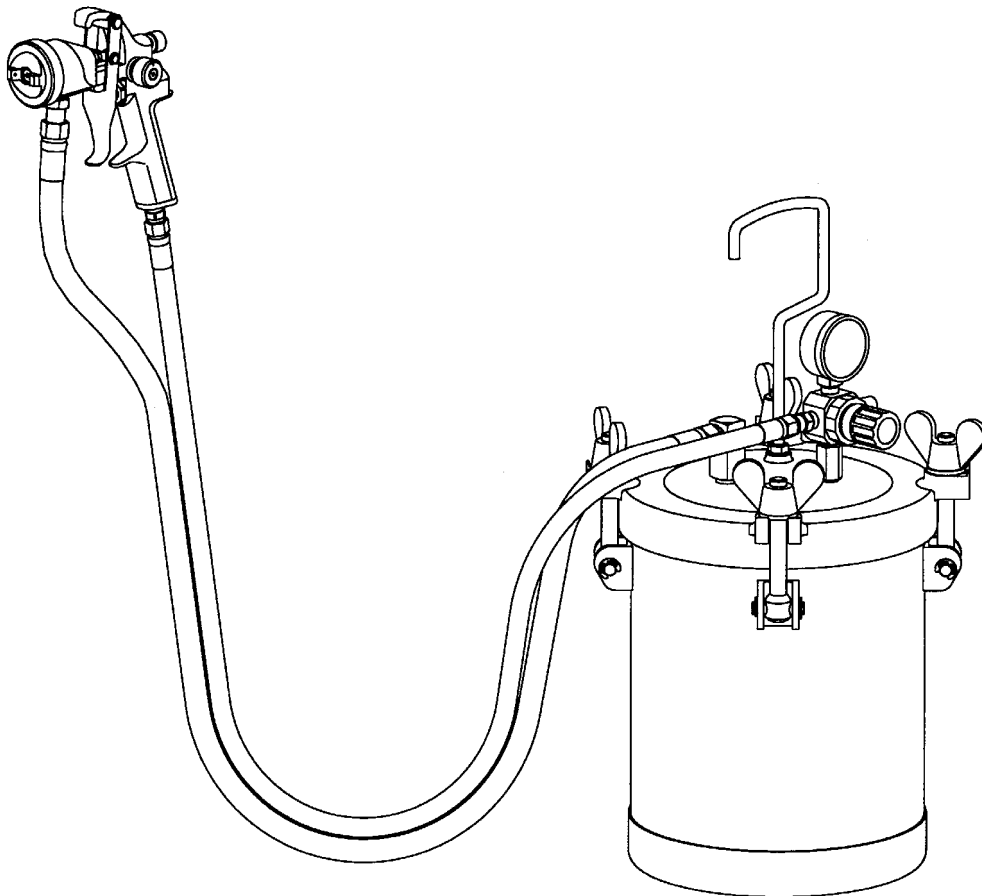




HVLP Pressure Feed Systems

(2 Quart and 2-1/2 Gallon Fluid Handling)

Owners Manual



This manual covers the following Accuspray HVLP Models

**2 Quart Cups
2-1/2 Gallon Paint Tanks**

HVLP Pressure Feed Systems Overview

These systems are for fleets and larger production applications. Both the remote 2 quart pressure cup and the 2-1/2 gallon paint tank extend production capabilities and eliminate the inconvenience of repeated refills. And with an Accuspray HVLP spray gun, your paint will go twice as far as with conventional high-pressure spray systems.

Features include both air and fluid regulation. You have control of quality and atomization and rate of application. Consistent film build and perfect spray patterns are easy to obtain. Even difficult to atomize coatings can be applied quickly and efficiently.

Unpacking

Remove the components from the box. Inspect for concealed damage. If you discover any damage contact your distributor immediately.

Table of Contents

General Safety.....	3
Operating Guidelines.....	4
General Overview.....	5
2 Quart Pressure Cup Assembly.....	6
2 Quart Regulator and Gauge Assemblies.....	7
Parts Identification 94-825.....	9
Parts Identification 45-140.....	10
Parts Identification 45-240.....	11
Parts Identification 45-340.....	12
Parts Identification 45-540.....	13
Parts Identification 94-800.....	14
Accessories.....	15

General Safety

Accuspray's HVLP equipment is for professional use only. Hazards can occur from equipment misuse. Any misuse of the equipment or accessories, such as over pressurizing, modifying parts, using incompatible chemicals and fluids, or using worn or damaged parts can cause serious bodily injury, fire, explosion or property damage. **Read, understand and follow all general safety, safety precautions and user instructions before using your AccuSpray equipment.**

- **NEVER** point a spray gun at anyone or any part of the body.
- **NEVER** place your hand or fingers in front of a spray nozzle.
- **NEVER** try to stop or deflect fluid leaks with your hand or body.
- **NEVER** alter or modify any part of this equipment.
- **CHECK** your spray equipment before each use. Repair or replace worn or damaged parts immediately.
- **ALWAYS** use Accuspray replacement parts. Only these parts were designed to work with your equipment.

Safety Precautions

Solvents and coatings can be highly flammable to combustible, especially when sprayed. Adequate exhaust must be provided to keep the air free of accumulations of flammable vapors. Smoking must never be allowed in spray areas. Fire extinguishing equipment must be present in the spray area.

Certain materials may be harmful if inhaled or if there is contact with the skin. Follow the requirements of the Material Safety Data Sheet supplied by the coating manufacturer. Use a respirator whenever there is a chance of inhaling sprayed material. The mask must be compatible with the material being sprayed and its concentration. Safety equipment must be NIOSH approved.

Certain solvents containing Methylene Chloride and Trichloromethane are not chemically compatible with aluminum or zinc. The solvents reaction can become violent or explosive. If you are in doubt whether a coating or cleaning material is compatible, contact your material supplier.

Improper operation or maintenance may create a hazard. Personnel must be given training. Instructions and safety precautions must be read and understood. Comply with your local, state, and national codes governing ventilation, fire protection, operation, maintenance, and housekeeping.

Warnings

2 Quart Pressure Cup: Do not exceed 50psi

2 ½ Gallon Tank: Do not exceed 80psi

All 2 quart and 2-½ gallon come with a factory installed relief valve. Do not attempt to replace relief valve with a plug. Pull on relief valve ring to insure that it is working properly. Replace a faulty relief valve immediately.

Before opening your pressurized containers, disconnect all air and relieve pressure by opening relief valve or screw.

Fluid Pressure Range

Using fluid pressures over 20psi may create heavy center effects in the spray patterns. Changing the fluid nozzle to the next larger size, then reducing the fluid pressure will reduce the heavy center effects in the spray patterns.

Installation Notes

Your Accuspray gun wrench #91-145 or #97-047 can be used in place of all ¾" wrench references in this booklet. The use of prefilters and coalescing filters are highly recommended so that only clean air is used to avoid contamination.

Maintenance

To prevent damage to the 2 quart cup, never place cup lid in a gun washer without removing the regulator and gauge and the safety valve. The cup may be placed in a gun washer, or pour out the contents, then flush the cup with clean solvents and wipe it dry.

After using the 2-½ gallon paint tank, pour out the contents, the flush out the pot, spraygun and hoses and then wipe it dry.

*Note: The 2 -½ gallon paint tanks are coated vessels and are not warranted against customer misuse. Care must be taken not to scratch through non-stick coating. Scratches and prolonged exposure to harsh solvents may lead to peeling of the coating. Use of pot liners will extend life of your paint tank.

General Overview-Pressure Set-Ups

42-130 and 45-140

The 42-130 and the 45-140 models include a single fluid pressure regulator and gauge that regulate the cup or tank fluid pressure. All Accuspray pressure fed handguns can be used with the 42-130 and 45-140 models. An additional airline is required to deliver atomizing air to the gun. For series 12, 12S, 16, 18, and 19 high-pressure inlet guns, this air source can be connected right to the gun. For series 10 and 14 low pressure inlet guns, it will be connected to the gun-attached low-pressure mini-regulator and gauge. Model 42-137 includes a 6.6' fluid hose, model 45-143 includes a 30' fluid hose.

42-230 and 45-240

The 42-230 and 45-240 models include dual regulators and gauges. One regulator controls the fluid pressure, while the other controls the low-pressure atomizing air. These models can be used with series 10 and 14 low-pressure inlet guns. Model 42-237 includes a 6.6' fluid and 6' whip air hose. Model 45-243 includes a 30' fluid and air hoses with a 3' whip.

42-330 and 45-340

The 42-330 and 45-340 models include a flow-thru regulator and gauge, which controls the fluid pressure while flowing high pressure atomizing air to gun. These models are commonly used with series 12, 12S, 16, 18, 19, or 10 series using a 36-00 regulator. Model 42-337 includes 6.6' fluid hose and 6' air hose. Model 45-343 includes 30' fluid and air hoses.

42-530 and 45-540

The 42-530 and 45-540 models include dual high-pressure regulators and gauges. One regulator controls the fluid pressure while the other controls high-pressure atomizing air. These models would be used with series 12, 12S, 16, 18, and 19 guns. Model 42-537 includes 6.6' fluid hose and 6' air hose. Model 45-543 includes 30' fluid and air hoses.

Set-Up

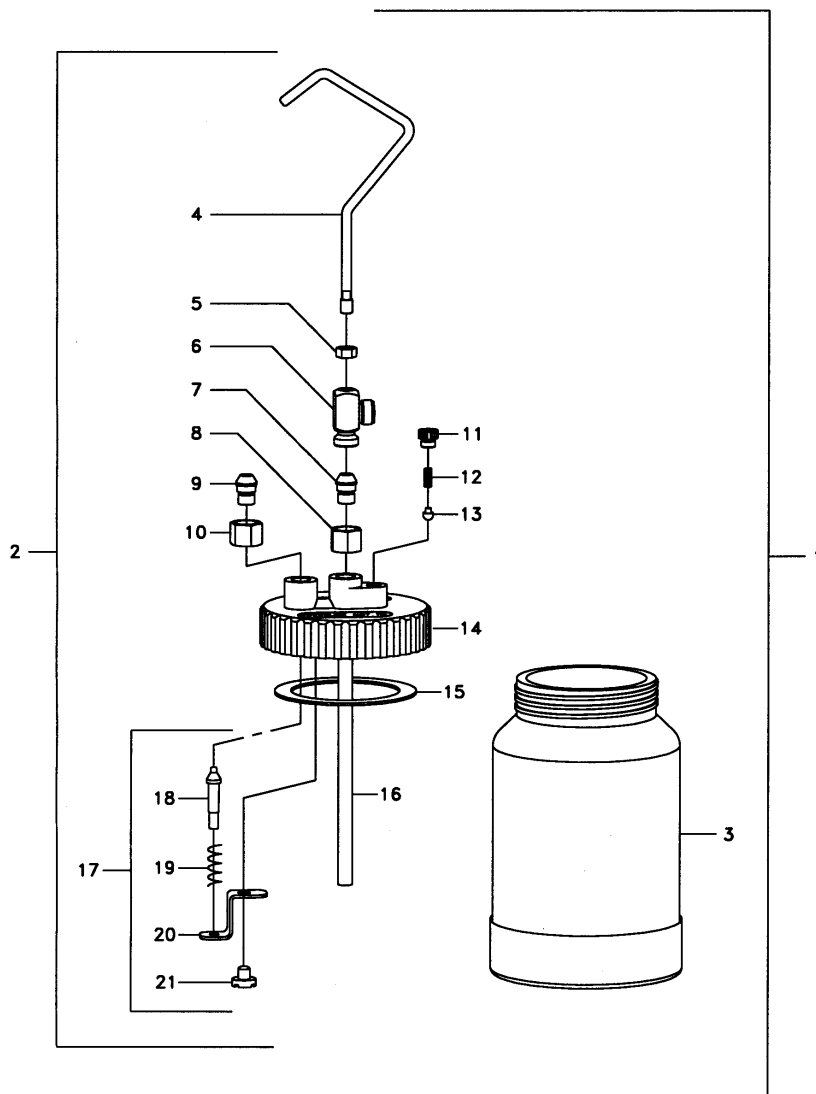
With material in your cup, tighten the lid and pressure relief screw. For 2-1/2 gallon tank, hand tighten the wing nuts.

Attach your incoming high-pressure air to the 1/4" quick disconnect fitting on the regulator. Attach one end of your fluid hose to the fluid inlet fitting on the gun with a 3/4" open-end wrench. Use an 11/16" open-end wrench to apply counter force to the fluid inlet fitting. Attach the other end of your fluid hose to the cup or tank with a 3/4" open-end wrench. Use an 11/16" open-end wrench to apply counterforce to the tank fitting.

Attach one end of your atomizing air hose to the air hose outlet . Attach the other end to your guns air inlet or attached mini-regulator. With everything secure, begin to pressurize your cup or tank.

Note: Set inlet fluid pressures to 0-20 psi. Fluid atomizes best within this range. Higher pressures may be required for some applications.

42-03 2 Quart Pressure Cup Assembly

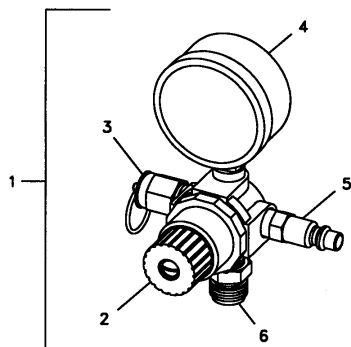


ITEM	PART No.	DESCRIPTION
1	42-03	COMPLETE 2 QUART CUP ASSEMBLY
2	94-133	COMPLETE CUP LID ASSEMBLY
3	94-121	2 QUART FLUID CUP
4	94-395	HANDLE
5	94-394	JAM NUT
6	91-393	FLUID OUTLET FITTING
7	94-355	FLARELESS FITTING
8	94-354	SWIVEL NUT
9	94-391	FLARELESS FITTING
10	94-390	SWIVEL NUT
11	94-089	RELIEF VALVE STEM

ITEM	PART No.	DESCRIPTION
12	94-090	RELIEF VALVE SPRING
13	94-091	RELIEF VALVE
14	94-392	CUP LID
15	94-122	GASKET
16	94-264	FLUID TUBE
17	94-286	CHECK VALVE REPLACEMENT KIT
18	94-262	CHECK VALVE
19	94-263	CHECK VALVE SPRING
20	94-266	CHECK VALVE BRACKET
21	94-260	SCREW

2 Quart Regulator and Gauge Assemblies

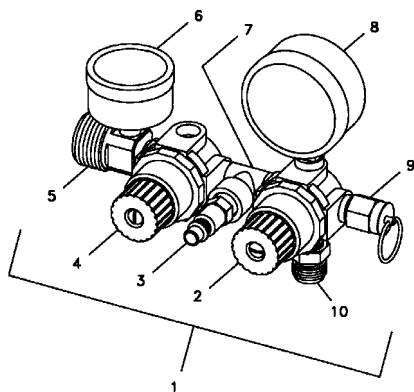
93-065 Single Fluid Regulator



Item	P/N	Description
1	93-065	Single Regulator
2	93-087	0-10 PSI Regulator
3	94-097	Relief Valve
4	93-088	0-30 PSI Gauge
5	80-936	Male Plug
6	80-957	Fitting

Used with Models: 42-130, 42-137, and 42-437

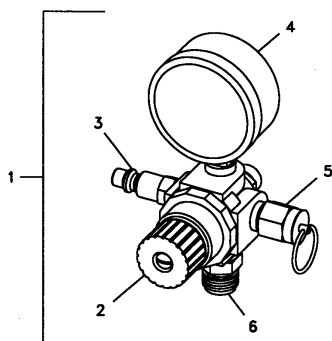
93-078 Dual Low-Pressure Regulator



Item	P/N	Description
1	93-078	Dual Regulator
2	93-087	0-10 PSI Regulator
3	80-836	Male Plug
4	93-025	0-10 PSI Regulator
5	93-006	Adaptor Body
6	93-035	0-10 PSI Gauge
7	93-054	Tee Fitting
8	93-088	0-30 PSI Gauge
9	94-097	Relief Valve
10	80-957	Fitting

Used with Models 42-230 & 42-237

93-077 Flow-Thru Regulator

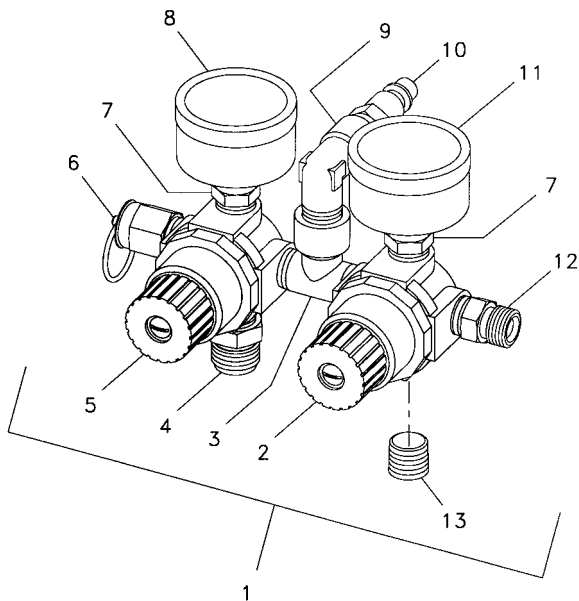


Item	P/N	Description
1	93-077	Flow-Thru Regulator
2	93-079	0-10 PSI Regulator
3	94-097	Relief Valve
4	93-088	0-30 PSI Gauge
5	80-936	Male Plug
6	80-957	Fitting

Used with Models 42-330 & 42-337

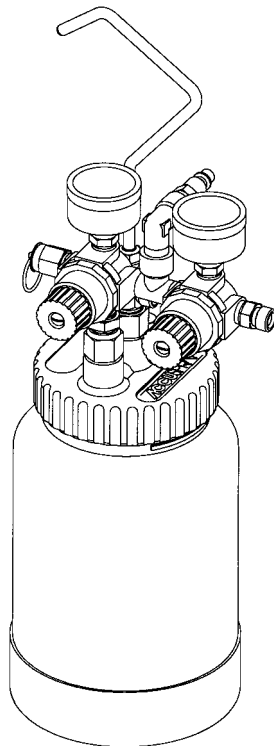
2 Quart Regulator and Gauge Assemblies –Cont.

93-186 Dual High-Pressure Regulator



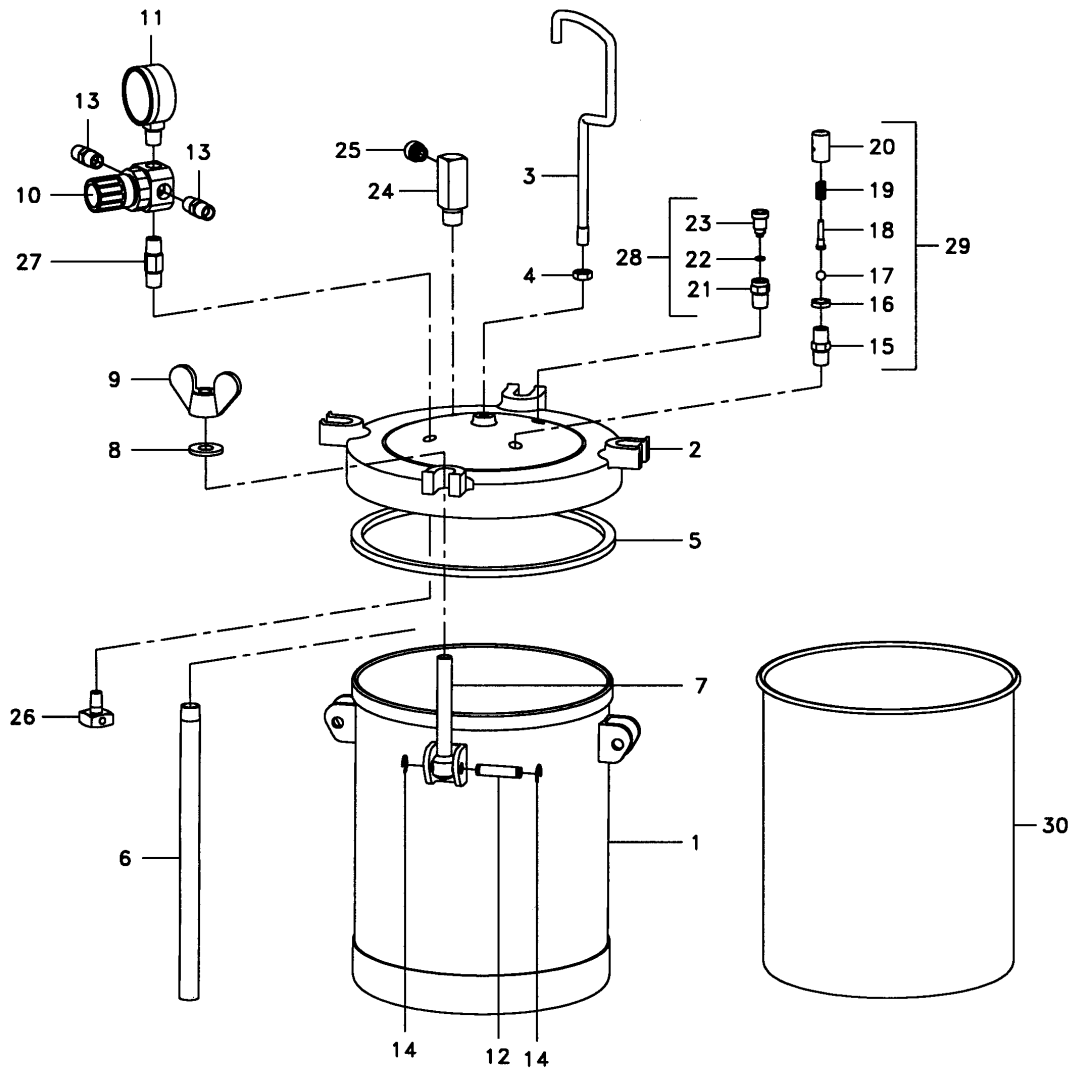
Item	P/N	Description
1	93-186	Dual Regulator Assembly
2	93-063	0-125 PSI Air Regulator
3	93-054	Tee Fitting
4	80-957	Adaptor Fitting
5	93-030	0-60 PSI Air Regulator
6	94-097	Relief Valve
7	UH-1418	Hex Bushing
8	93-185	0-60 PSI Air Gauge
9	93-102	0-120 PSI Air Gauge
10	80-936	Quick Disconnect
11	93-102	0-120 PSI Air Gauge
12	91-138	Hose Fitting
13	UH-1031	Port Plug

Used with Models 42-530 & 42-537



*42-530 Shown Assembled

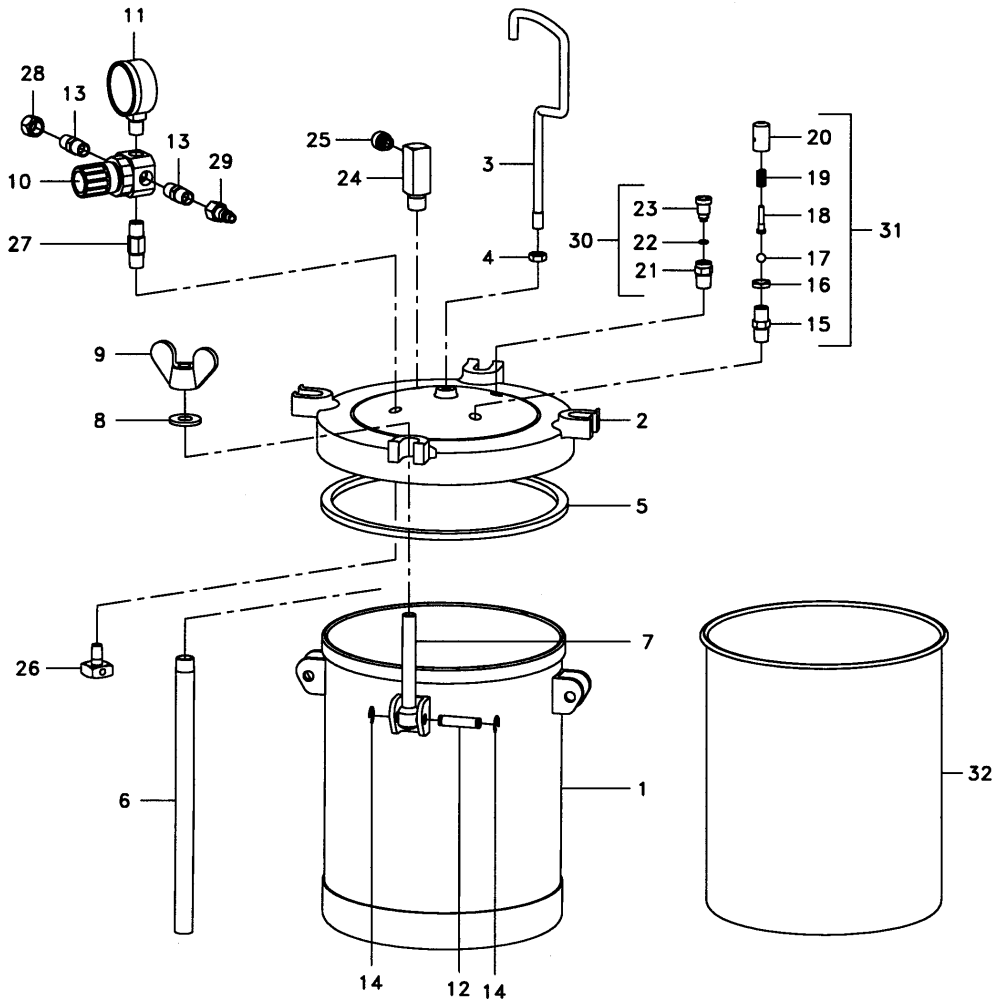
94-825 Standard 2-1/2 Gallon Pressure Tank Assembly



ITEM	PART No.	DESCRIPTION
1	94-825-1	2-1/2 GAL. PRESSURE TANK
2	94-825-2	PRESSURE TANK LID
3	94-825-3	HANDLE
4	94-825-4	JAM NUT
5	94-825-5	LID GASKET
6	94-825-6	FLUID PIPE
7	94-825-7	EYE BOLT
8	94-825-8	FLAT WASHER
9	94-825-9	WING NUT
10	94-825-10	AIR PRESSURE REGULATOR
11	94-825-11	AIR PRESSURE GAUGE
12	94-800-13	RETAINING PIN
13	94-800-18	HEX NIPPLE
14	94-800-19	RETAINING PIN E-CLIP
15	94-800-20	SAFTY VALVE ADAPTOR

ITEM	PART No.	DESCRIPTION
16	94-800-21	JAM NUT
17	94-800-22	SAFTY VALVE BALL
18	94-800-23	NEEDLE ROD
19	94-800-24	SPRING
20	94-800-25	SAFTY VALVE HOUSING
21	94-800-26	PRESSURE RELIEF ADAPTOR
22	94-800-27	O-RING
23	94-800-28	PRESSURE RELIEF SCREW
24	94-800-29	FLUID FITTING BODY
25	94-800-30	FLUID FITTING INSERT
26	94-800-31	AIR INLET DEFUSER
27	94-800-18-TSS	HEX NIPPLE (LONG)
28	94-801	PRESSURE RELIEF VALVE ASSEMBLY
29	94-802	SAFTY RELIEF VALVE ASSEMBLY
30	94-052	PRESSURE TANK LINER

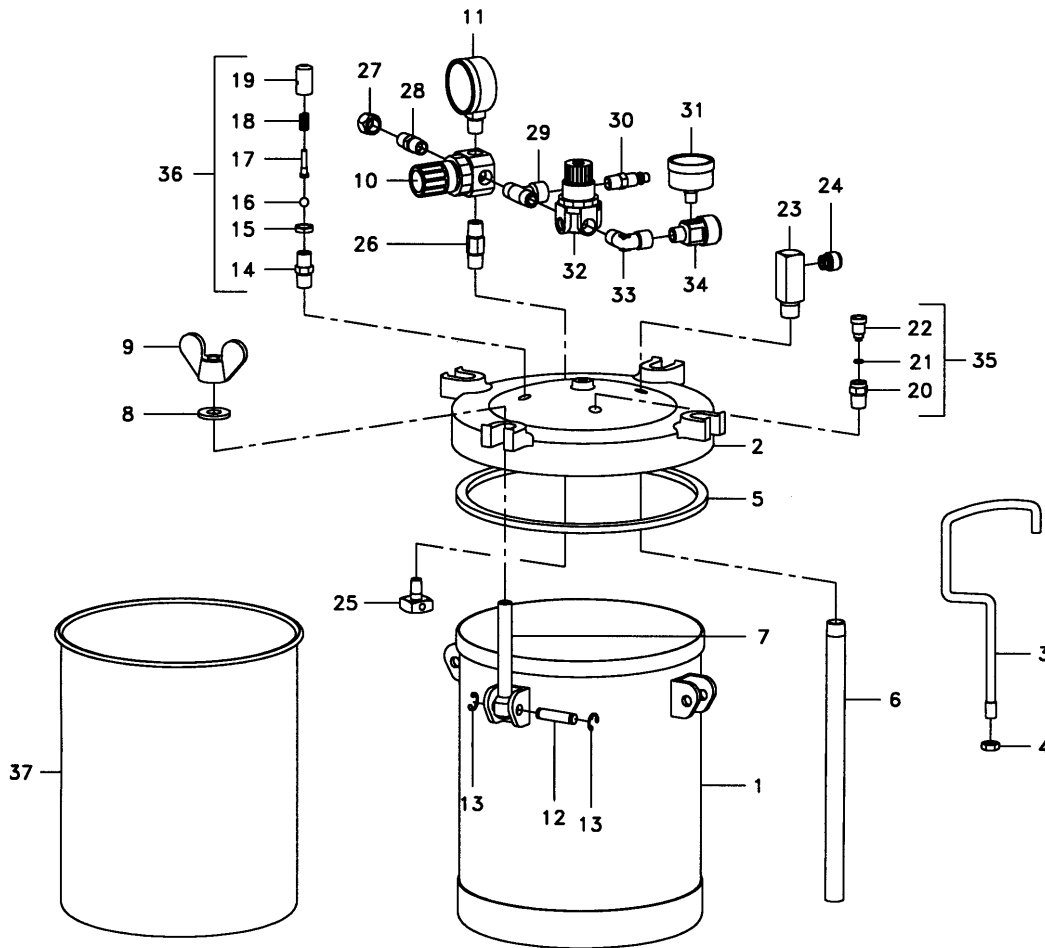
45-140 Standard 2-1/2 Gallon Pressure Tank Assembly Fluid Regulated



ITEM	PART No.	DESCRIPTION
	45-140	2-1/2 GAL. PRESSURE TANK ASSEMBLY
1	94-825-1	2-1/2 GAL. PRESSURE TANK
2	94-825-2	PRESSURE TANK LID
3	94-825-3	HANDLE
4	94-825-4	JAM NUT
5	94-825-5	LID GASKET
6	94-825-6	FLUID PIPE
7	94-825-7	EYE BOLT
8	94-825-8	FLAT WASHER
9	94-825-9	WING NUT
10	94-825-10	AIR PRESSURE REGULATOR
11	94-825-11	AIR PRESSURE GAUGE
12	94-800-13	RETAINING PIN
13	94-800-18	HEX NIPPLE
14	94-800-19	RETAINING PIN E-CLIP
15	94-800-20	SAFTY VALVE ADAPTOR
16	94-800-21	JAM NUT

ITEM	PART No.	DESCRIPTION
17	94-800-22	SAFTY VALVE BALL
18	94-800-23	NEEDLE ROD
19	94-800-24	SPRING
20	94-800-25	SAFTY VALVE HOUSING
21	94-800-26	PRESSURE RELIEF ADAPTOR
22	94-800-27	O-RING
23	94-800-28	PRESSURE RELIEF SCREW
24	94-800-29	FLUID FITTING BODY
25	94-800-30	FLUID FITTING INSERT
26	94-800-31	AIR INLET DEFUSER
27	94-800-18-TSS	HEX NIPPLE (LONG)
28	94-825-13	HEX NIPPLE CAP
29	94-825-12	Q.D. CONNECTOR
30	94-801	PRESSURE RELIEF VALVE ASSEMBLY
31	94-802	SAFTY RELIEF VALVE ASSEMBLY
32	94-052	PRESSURE TANK LINER

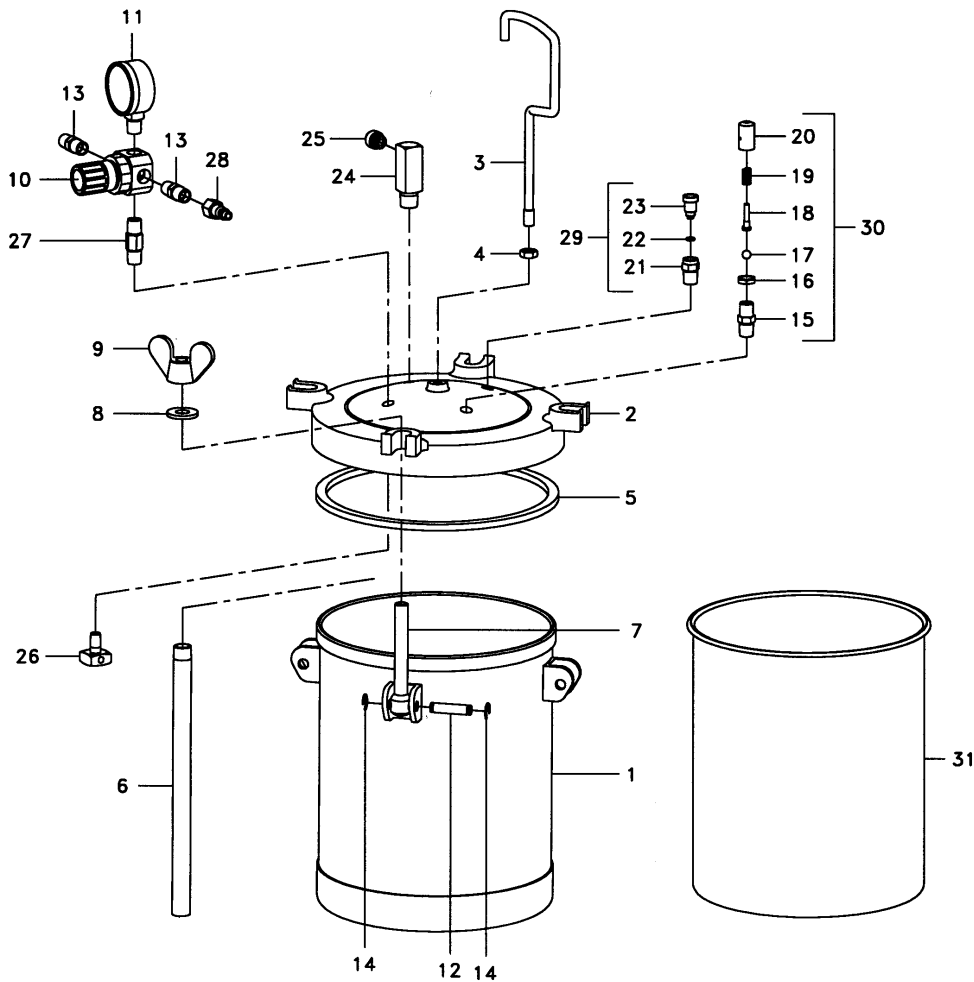
45-240 Standard 2-1/2 Pressure Tank Assembly Low Pressure Dual Air/Fluid Regulator



ITEM	PART No.	DESCRIPTION
	45-240	2-1/2 GAL. PRESSURE TANK ASSEMBLY
1	94-825-1	2-1/2 GAL. PRESSURE TANK
2	94-825-2	PRESSURE TANK LID
3	94-825-3	HANDLE
4	94-825-4	JAM NUT
5	94-825-5	LID GASKET
6	94-825-6	FLUID PIPE
7	94-825-7	EYE BOLT
8	94-825-8	FLAT WASHER
9	94-825-9	WING NUT
10	94-825-10	AIR PRESSURE REGULATOR
11	94-825-11	AIR PRESSURE GAUGE
12	94-800-13	RETAINING PIN
13	94-800-19	RETAINING PIN E-CLIP
14	94-800-20	SAFETY VALVE ADAPTOR
15	94-800-21	JAM NUT
16	94-800-22	SAFETY VALVE BALL
17	94-800-23	NEEDLE ROD
18	94-800-24	SPRING

ITEM	PART No.	DESCRIPTION
19	94-800-25	SAFETY VALVE HOUSING
20	94-800-26	PRESSURE RELIEF ADAPTOR
21	94-800-27	O-RING
22	94-800-28	PRESSURE RELIEF SCREW
23	94-800-29	FLUID FITTING BODY
24	94-800-30	FLUID FITTING INSERT
25	94-800-31	AIR INLET DEFUSER
26	94-800-18-TSS	HEX NIPPLE (LONG)
27	94-825-13	HEX NIPPLE CAP
28	94-800-18	HEX NIPPLE
29	93-054	TEE FITTING
30	80-936	Q.D. CONNECTOR
31	93-035	AIR PRESSURE GAUGE
32	93-025V	AIR PRESSURE REGULATOR
33	UH-867	ELBOW
34	93-006	ADAPTOR FITTING
35	94-801	PRESSURE RELIEF VALVE ASSEMBLY
36	94-802	SAFETY RELIEF VALVE ASSEMBLY
37	94-052	PRESSURE TANK LINER

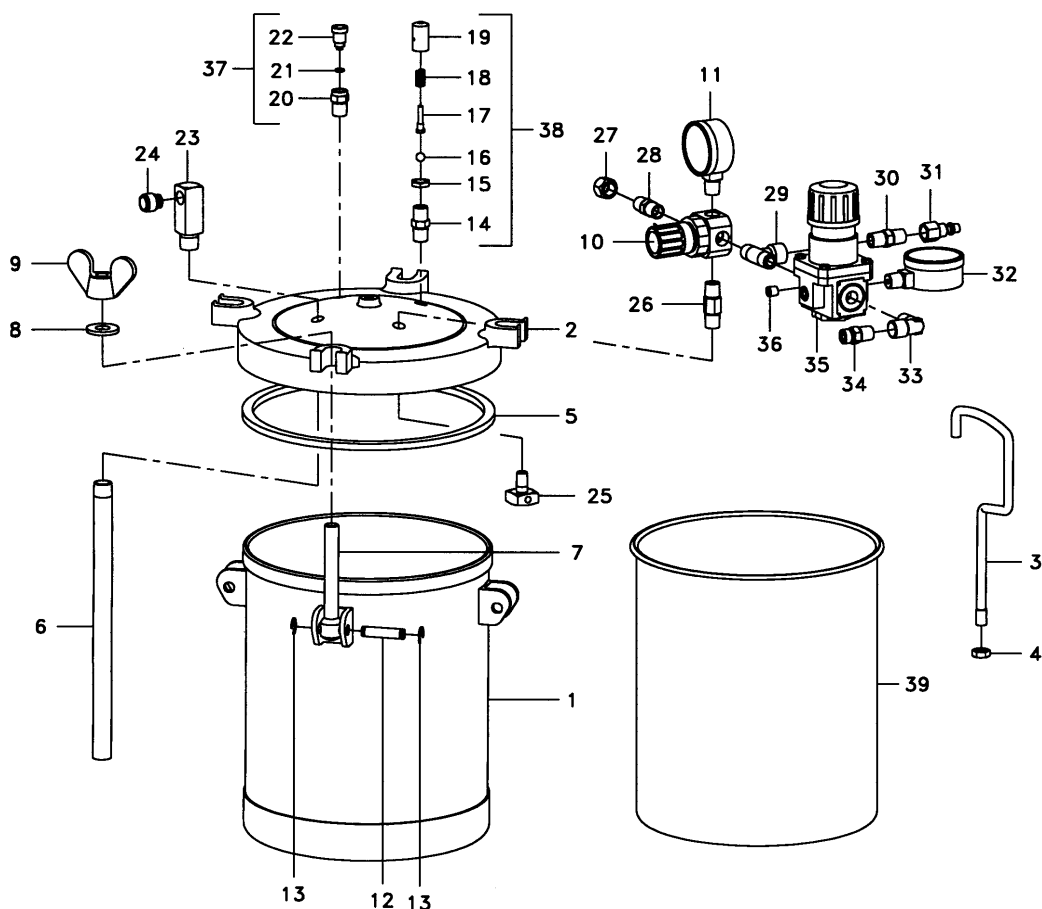
45-340 Standard 2-1/2 Gallon Pressure Tank Assembly High Pressure Flow Thru Air/Fluid Regulator



ITEM	PART No.	DESCRIPTION
	45-340	2-1/2 GAL. PRESSURE TANK ASSEMBLY
1	94-825-1	2-1/2 GAL. PRESSURE TANK
2	94-825-2	PRESSURE TANK LID
3	94-825-3	HANDLE
4	94-825-4	JAM NUT
5	94-825-5	LID GASKET
6	94-825-6	FLUID PIPE
7	94-825-7	EYE BOLT
8	94-825-8	FLAT WASHER
9	94-825-9	WING NUT
10	94-825-10	AIR PRESSURE REGULATOR
11	94-825-11	AIR PRESSURE GAUGE
12	94-800-13	RETAINING PIN
13	94-800-18	HEX NIPPLE
14	94-800-19	RETAINING PIN E-CLIP
15	94-800-20	SAFTY VALVE ADAPTOR

ITEM	PART No.	DESCRIPTION
16	94-800-21	JAM NUT
17	94-800-22	SAFTY VALVE BALL
18	94-800-23	NEEDLE ROD
19	94-800-24	SPRING
20	94-800-25	SAFTY VALVE HOUSING
21	94-800-26	PRESSURE RELIEF ADAPTOR
22	94-800-27	O-RING
23	94-800-28	PRESSURE RELIEF SCREW
24	94-800-29	FLUID FITTING BODY
25	94-800-30	FLUID FITTING INSERT
26	94-800-31	AIR INLET DEFUSER
27	94-800-18-TSS	HEX NIPPLE (LONG)
28	94-825-12	Q.D. CONNECTOR
29	94-801	PRESSURE RELIEF VALVE ASSEMBLY
30	94-802	SAFTY RELIEF VALVE ASSEMBLY
31	94-052	PRESSURE TANK LINER

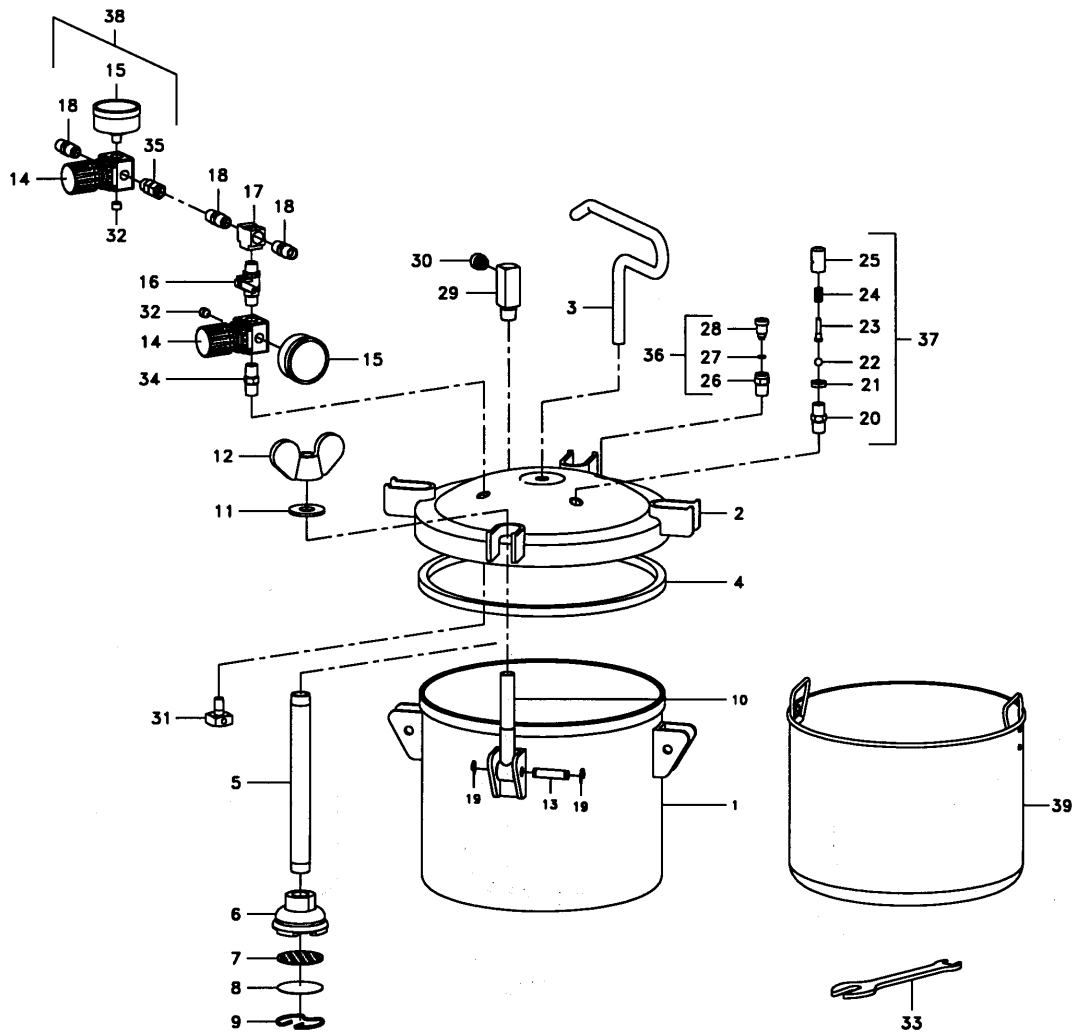
45-540 Standard 2-1/2 Gallon Pressure Tank Assembly High Pressure Dual Air/Fluid Regulator



ITEM	PART No.	DESCRIPTION
	45-540	2-1/2 GAL. PRESSURE TANK ASSEMBLY
1	94-825-1	2-1/2 GAL. PRESSURE TANK
2	94-825-2	PRESSURE TANK LID
3	94-825-3	HANDLE
4	94-825-4	JAM NUT
5	94-825-5	LID GASKET
6	94-825-6	FLUID PIPE
7	94-825-7	EYE BOLT
8	94-825-8	FLAT WASHER
9	94-825-9	WING NUT
10	94-825-10	AIR PRESSURE REGULATOR
11	94-825-11	AIR PRESSURE GAUGE
12	94-800-13	RETAINING PIN
13	94-800-19	RETAINING PIN E-CLIP
14	94-800-20	SAFTY VALVE ADAPTOR
15	94-800-21	JAM NUT
16	94-800-22	SAFTY VALVE BALL
17	94-800-23	NEEDLE ROD
18	94-800-24	SPRING
19	94-800-25	SAFTY VALVE HOUSING

ITEM	PART No.	DESCRIPTION
20	94-800-26	PRESSURE RELIEF ADAPTOR
21	94-800-27	O-RING
22	94-800-28	PRESSURE RELIEF SCREW
23	94-800-29	FLUID FITTING BODY
24	94-800-30	FLUID FITTING INSERT
25	94-800-31	AIR INLET DEFUSER
26	94-800-18-TSS	HEX NIPPLE (LONG)
27	94-825-13	HEX NIPPLE CAP
28	94-800-18	HEX NIPPLE
29	93-054	TEE FITTING
30	UH-1098	HEX NIPPLE
31	94-825-12	Q.D. CONNECTOR
32	93-064	AIR PRESSURE GAUGE
33	UH-867	ELBOW
34	80-708	CONNECTOR
35	93-096	AIR PRESSURE REGULATOR
36	UH-819	1/8" PLUG
37	94-801	PRESSURE RELIEF VALVE ASSEMBLY
38	94-802	SAFTY RELIEF VALVE ASSEMBLY
39	94-052	PRESSURE TANK LINER

94-800 Heavy Duty 2-1/2 Gallon Pressure Tank Assembly



ITEM	PART No.	DESCRIPTION
1	94-800-1	2-1/2 GAL. PRESSURE TANK
2	94-800-2	PRESSURE TANK LID
3	94-800-3	HANDLE
4	94-800-4	LID GASKET
5	94-800-5	FLUID PIPE
6	94-800-6	FILTER PAD
7	94-800-7	FILTER BASE
8	94-800-8	FILTER SCREEN
9	94-800-9	RETAINING SPRING
10	94-800-10	EYE BOLT
11	94-800-11	FLAT WASHER
12	94-800-12	WING NUT
13	94-800-13	RETAINING PIN
14	94-800-14	AIR PRESSURE REGULATOR
15	94-800-15	AIR PRESSURE GAUGE
16	94-800-16	BALL VALVE
17	94-800-17	TEE FITTING
18	94-800-18	HEX NIPPLE
19	94-800-19	RETAINING PIN E-CLIP
20	94-800-20	SAFETY VALVE ADAPTOR

ITEM	PART No.	DESCRIPTION
21	94-800-21	JAM NUT
22	94-800-22	SAFETY VALVE BALL
23	94-800-23	NEEDLE ROD
24	94-800-24	SPRING
25	94-800-25	SAFETY VALVE HOUSING
26	94-800-26	PRESSURE RELIEF ADAPTOR
27	94-800-27	O-RING
28	94-800-28	PRESSURE RELIEF SCREW
29	94-800-29	FLUID FITTING BODY
30	94-800-30	FLUID FITTING INSERT
31	94-800-31	AIR INLET DEFUSER
32	94-800-32	PLUG
33	94-800-33	WRENCH
34	94-800-34	AIR INLET ADAPTOR
35	94-800-35	SWIVEL FITTING
36	94-801	PRESSURE RELIEF VALVE ASSEMBLY
37	94-802	SAFETY RELIEF VALVE ASSEMBLY
38	94-803	AIR REGULATOR ASSEMBLY
39	94-804-A	PRESSURE TANK LINER (ALUM.)
	94-804-SS	PRESSURE TANK LINER (S.S.)

***Part# 94-803, 94-804A, and 94-804SS are optional equipment**

Accessories

2 Quart Cups

#61-1344006.6 1/4" ID Fluid Hose Assembly (6'-8" Long)
Used with models: 42-137, 42-237, 42-337, 42-437, and 42-537

#60-1433006 Air Hose Assembly (1/4" ID 6' Long)
Used with model 42-337 and 42-537

#60-4118006 Whip Hose Assembly (6' Long with QD & Shut Off)
Used with model 42-437

#94-122 Gasket for 2 quart cup lid - All 2 quart models
#94-286 Check Valve Replacement Kit - All 2 quart models

Standard 2-1/2 Gallon Paint Tanks

#61-2344030 Fluid Hose Assembly (3/8" ID, 30' Long)
Used with Models: 45-143, 45-243, 45-343, and 45-543

#60-4118430 Air Hose Assembly (30' Long with 3' Whip, QD and Shut Off)
Used with model 45-243

#60-5433030 High Pressure Air Hose Assembly (5/16" ID, 30' Long)
Used with models: 45-343 and 45-543

#94-825-5 Lid Gasket – All Standard 2-1/2 Gallon models
#94-052 Paint Tank Liner (Rigid Plastic) – Standard 2-1/2 Gallon models
#94-053/10 Disposable Paint Tank Liners (Pack of 10)

Heavy Duty 2-1/2 Gallon Paint Tanks

#98-077-35 Fluid Hose Assembly (35' Long, 3/8" ID)
#98-076-35 Air Hose Assembly (35' Long, 5/16" ID)
#94-803 Air Regulator Assembly (For Dual Regulation)
#94-804A Aluminum Paint Tank Liner
#94-804SS Stainless Steel Paint Tank Liner

To order additional copies of this manual, call Accuspray
Customer Service at 1-800-618-6860
Or fax your request to (440) 498-9815
Visit us online at: www.accuspray.net
Request Literature Number SM-PFS-0503

LIMITED WARRANTY

Accuspray warrants all equipment manufactured by and bearing its name to be free from defects in material and workmanship on the date of sale by an authorized Accuspray distributor to the original purchaser for use. Except as expressly stated in any Accuspray Special, Extended or Limited Warranty provided in writing by Accuspray, Accuspray shall for a period of twelve months from the date of sale, repair or replace any part of the equipment proven defective. This warranty applies only when the equipment is installed, operated and maintained in accordance with Accuspray's written recommendations.

This warranty does not cover, and Accuspray shall not be liable for, normal wear and tear components, any malfunction, damage, or wear caused by faulty installation, misapplication, abrasion, corrosion, inadequate or improper maintenance, negligence, accident, tampering, alteration or substitution of non-Accuspray component parts. Nor shall Accuspray be liable for malfunction, damage, or wear caused by the incompatibility with Accuspray equipment of structures, accessories, equipment or materials not supplied by Accuspray, or the improper design, manufacture, installation, operation or maintenance of structures, accessories, equipment or materials not supplied by Accuspray.

This warranty is conditional upon the prepaid return of the equipment claimed to be defective to an authorized Accuspray Service Center or to Accuspray, to verify the claimed defect. If the claimed defect is verified to be covered by this warranty, Accuspray will repair or replace free of charge any defective parts and the equipment will be returned to the original purchaser freight paid. If inspection of the equipment does not disclose a valid warranty claim, repairs, if any, will be made at a reasonable charge to the purchaser. These charges may include the cost of inspection, parts, labor, and return transportation.

Disclaimer and Limitations. The terms of this warranty constitute Accuspray's sole obligation and purchaser's sole and exclusive remedy and are in lieu of any other warranties (express or implied), including warranty of merchantability or warranty of fitness for a particular purpose, or any non-contractual liabilities, including product liabilities based on negligence or strict liability. Every form of liability for direct, special or consequential damages or loss is expressly excluded and denied. In no case shall Accuspray's liability exceed the amount of the purchase price. Any action for breach of warranty must be brought within two (2) years of date of sale.

Equipment Not Covered by Accuspray Warranty. Accuspray makes no warranty, and disclaims all implied warranties of merchantability and fitness for a particular purpose with respect to accessories, equipment, materials, or components sold but not manufactured by Accuspray. These items sold but not manufactured by Accuspray (such as electric motors, switches, hose, etc.), are subject to the warranty, if any, of their manufacturer. Accuspray will provide purchaser with reasonable assistance in making any claim for breach of these warranties.

Accuspray is a registered trademark of
Accuspray Application Technologies, Inc.

All other products named in this publication are either trademarks or registered
Trademarks of their respective owners.