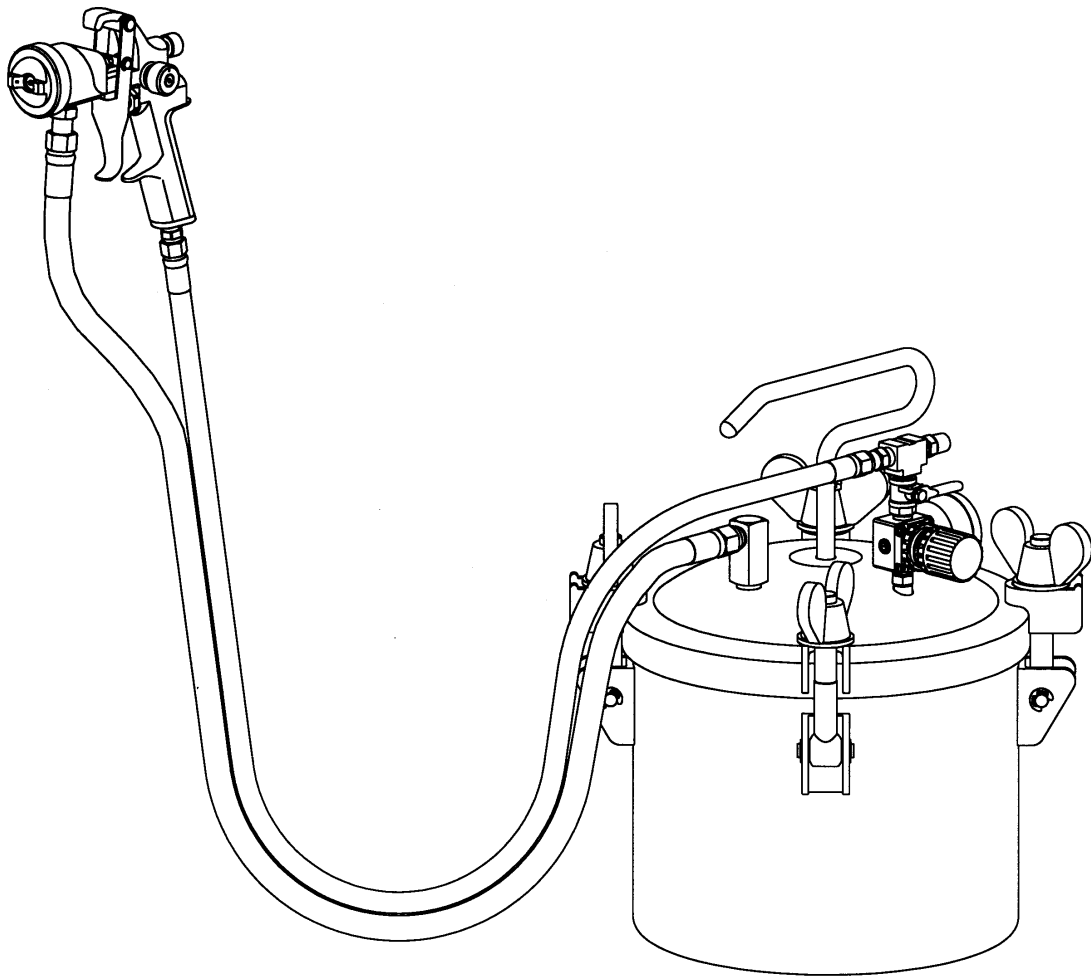




# Industrial HVLP Pressure Feed Systems

(2-1/2 and 5 Gallon Fluid Handling)

## Owners Manual



**This manual covers the following Accuspray HVLP Models:  
2-1/2 and 5 Gallon Paint Tanks**

---

## HVLP Pressure Feed Systems Overview

These systems are for fleets and larger production applications. Both the remote 2-1/2 gallon and the 5 gallon paint tanks extend production capabilities and eliminate the inconvenience of repeated refills. And with an Accuspray HVLP spray gun, your paint will go twice as far as with conventional high-pressure spray systems.

Features include both air and fluid regulation, with some models offering manual or air agitation. You have control of quality and atomization and rate of application. Consistent film build and perfect spray patterns are easy to obtain. Even difficult to atomize coatings can be applied quickly and efficiently.

### Unpacking

Remove the components from the box. Inspect for concealed damage. If you discover any damage contact your distributor immediately.

## Table of Contents

---

General Safety.....	3
Operating Guidelines.....	4
General Overview.....	5
Parts Identification 94-800.....	6
Parts Identification 94-810.....	7
Parts Identification 94-815.....	8
Parts Identification 94-820.....	10
Parts Identification 94-823A.....	12
Parts Identification 94-823M.....	14
Accessories.....	16
Industrial Paint Tank Assemblies.....	17

---

## General Safety

Accuspray's HVLP equipment is for professional use only. Hazards can occur from equipment misuse. Any misuse of the equipment or accessories, such as over pressurizing, modifying parts, using incompatible chemicals and fluids, or using worn or damaged parts can cause serious bodily injury, fire, explosion or property damage. **Read, understand and follow all general safety, safety precautions and user instructions before using your AccuSpray equipment.**

- **NEVER** point a spray gun at anyone or any part of the body.
- **NEVER** place your hand or fingers in front of a spray nozzle.
- **NEVER** try to stop or deflect fluid leaks with your hand or body.
- **NEVER** alter or modify any part of this equipment.
- **CHECK** your spray equipment before each use. Repair or replace worn or damaged parts immediately.
- **ALWAYS** use Accuspray replacement parts. Only these parts were designed to work with your equipment.

## Safety Precautions

Solvents and coatings can be highly flammable to combustible, especially when sprayed. Adequate exhaust must be provided to keep the air free of accumulations of flammable vapors. Smoking must never be allowed in spray areas. Fire extinguishing equipment must be present in the spray area.

Certain materials may be harmful if inhaled or if there is contact with the skin. Follow the requirements of the Material Safety Data Sheet supplied by the coating manufacturer. Use a respirator whenever there is a chance of inhaling sprayed material. The mask must be compatible with the material being sprayed and its concentration. Safety equipment must be NIOSH approved.

Certain solvents containing Methylene Chloride and Trichloromethane are not chemically compatible with aluminum or zinc. The solvents reaction can become violent or explosive. If you are in doubt whether a coating or cleaning material is compatible, contact your material supplier.

Improper operation or maintenance may create a hazard. Personnel must be given training. Instructions and safety precautions must be read and understood. Comply with your local, state, and national codes governing ventilation, fire protection, operation, maintenance, and housekeeping.

## **Warnings**

Your pressure feed system includes a Non-ASME paint tank; 80psi is not to be exceeded.

All 2-1/2 and 5 gallon tanks come with a factory installed relief valve. Do not attempt to replace relief valve with a plug. Pull on relief valve ring to insure that it is working properly. Replace a faulty relief valve immediately.

Before opening your pressurized containers, disconnect all air and relieve pressure by opening relief valve or screw.

## **Fluid Pressure Range**

Using fluid pressures over 20psi may create heavy center effects in the spray patterns. Changing the fluid nozzle to the next larger size, then reducing the fluid pressure will reduce the heavy center effects in the spray patterns.

## **Installation Notes**

Your Accuspray gun wrench #91-145 or #97-047 can be used in place of all 3/4" wrench references in this booklet. The use of prefilters and coalescing filters are highly recommended so that only clean air is used to avoid contamination.

## **Maintenance**

After using your paint tank, pour out the contents, the flush out the pot, spraygun and hoses and then wipe it dry.

\*Note: The 2 -1/2 and 5 gallon paint tanks are coated vessels and are not warranted against customer misuse. Care must be taken not to scratch through non-stick coating. Scratches and prolonged exposure to harsh solvents may lead to peeling of the coating. Use of pot liners will extend life of your paint tank.

### Set-Up

With material in your paint tank, hand-tighten the wing nuts.

Attach your incoming high-pressure air to the ¼" quick disconnect fitting on the regulator. Attach one end of your fluid hose to the fluid inlet fitting on the gun with a ¾" open-end wrench. Use an 11/16" open-end wrench to apply counterforce to the fluid inlet fitting. Attach the other end of your fluid hose to the cup or tank with a ¾" open-end wrench. Use an 11/16" open-end wrench to apply counterforce to the tank fitting.

Attach one end of your atomizing air hose to the air hose outlet. Attach the other end to your gun air inlet or attached mini-regulator. With everything secure, begin to pressurize your tank.

All industrial 2-1/2 and 5 gallon paint tanks have a dual regulation option available. One regulator controls the fluid pressure while the other controls the high-pressure atomizing air. Dual regulation give you added control of fluid and air without the bulk and weight of a mini-regulator at the gun. If your paint tank does not include dual regulators, part#94-803 can be added on as an atomizing air regulator.

All industrial 2-1/2 and 5 gallon paint tanks can be used with the 12, 12s series sprayguns and the 19,19I, and 19c sprayguns.

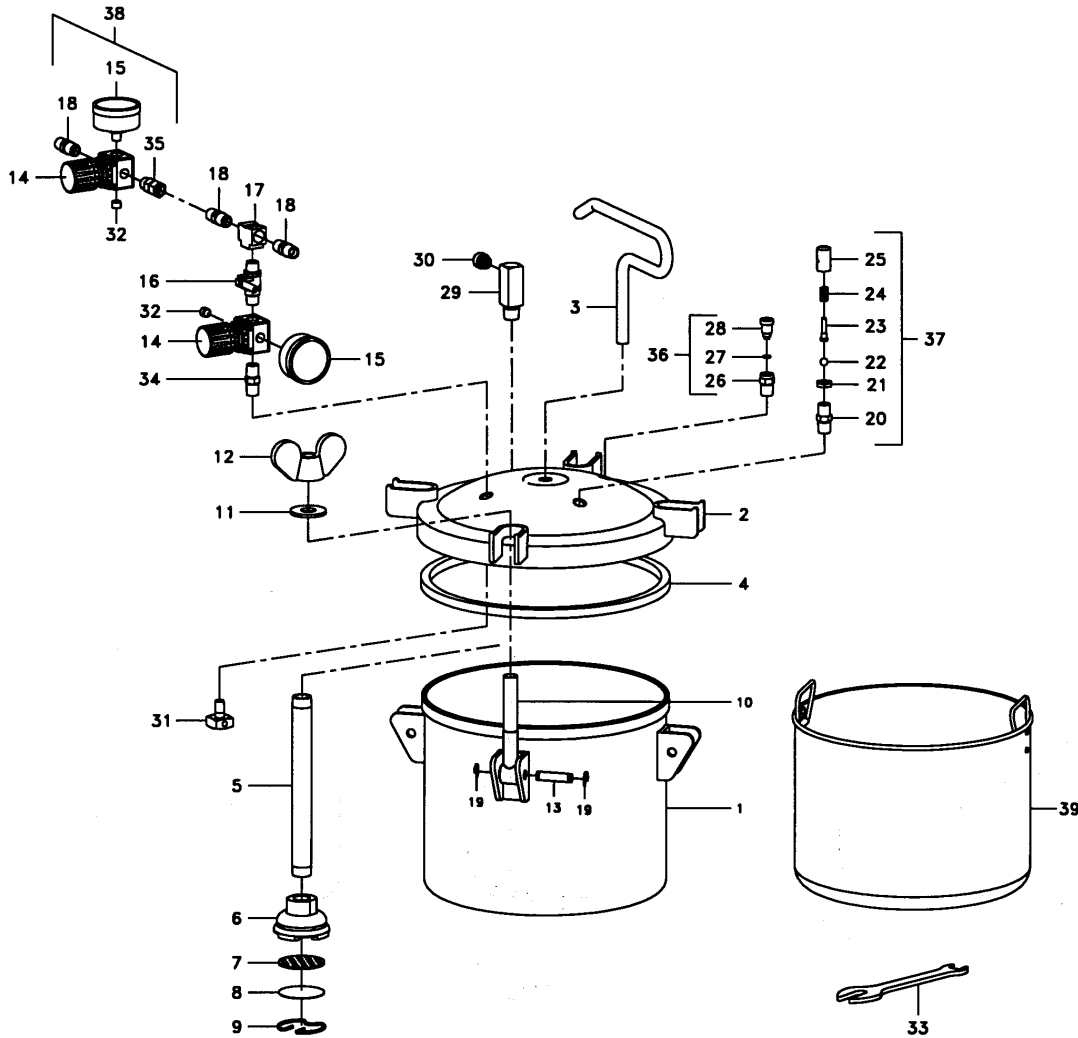
**Note:** Set inlet fluid pressures to 0-20 psi. Fluid atomizes best within this range. Higher pressures may be required for some applications.

#### Agitation

Manual Agitator: Turn handle as often as required.

Air Agitator: Open air control valve until mixer blade begins to turn. Adjust valve to achieve desired speed. Lubricate every 8 hours of operation by adding 2 drops of light oil to rod guide. Excessive lubrication may cause contamination of tank contents.

# 94-800 VMX 2-1/2 Gallon Paint Tank

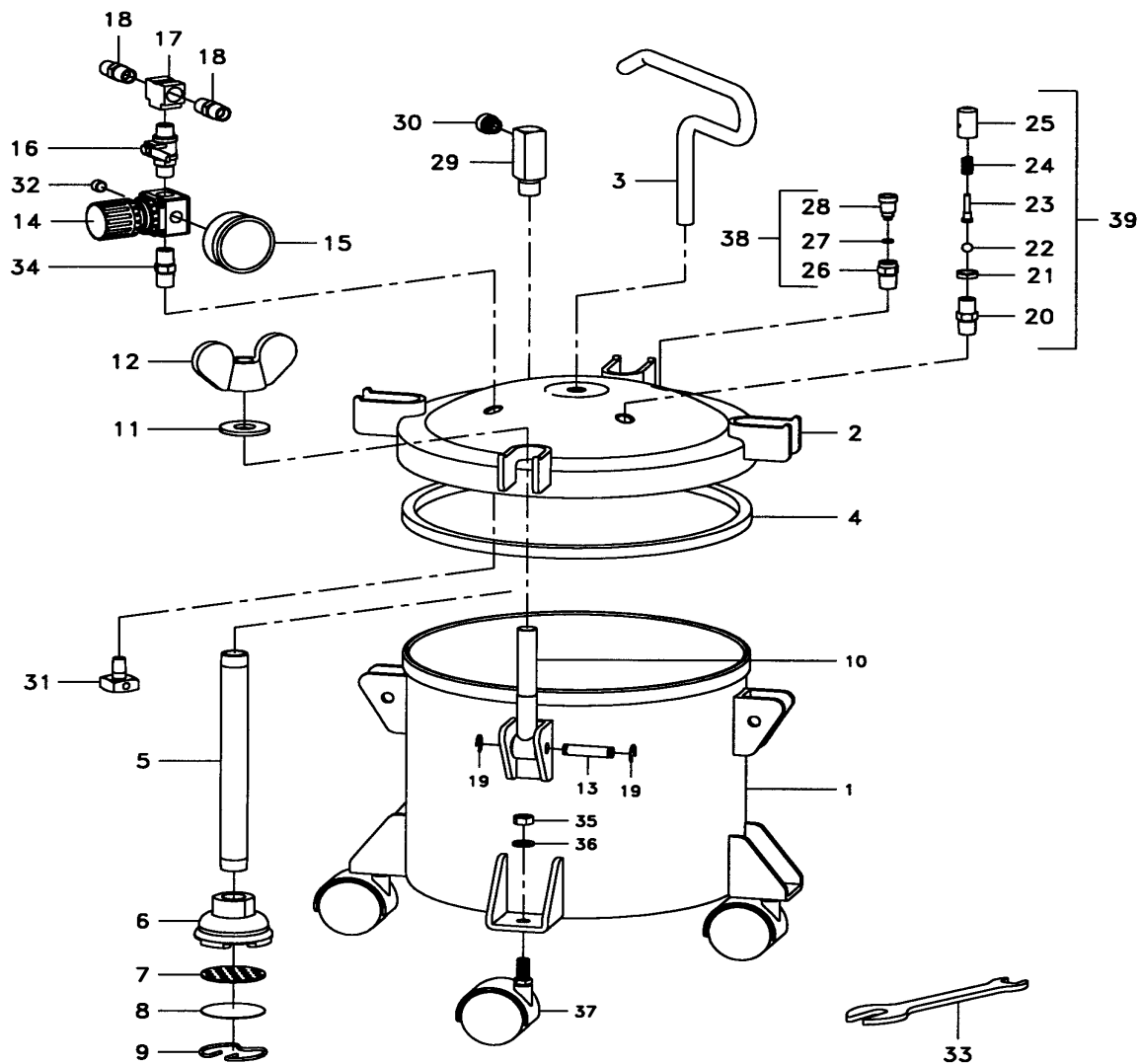


ITEM	PART No.	DESCRIPTION
1	94-800-1	2-1/2 GAL. PRESSURE TANK
2	94-800-2	PRESSURE TANK LID
3	94-800-3	HANDLE
4	94-800-4	LID GASKET
5	94-800-5	FLUID PIPE
6	94-800-6	FILTER PAD
7	94-800-7	FILTER BASE
8	94-800-8	FILTER SCREEN
9	94-800-9	RETAINING SPRING
10	94-800-10	EYE BOLT
11	94-800-11	FLAT WASHER
12	94-800-12	WING NUT
13	94-800-13	RETAINING PIN
14	94-800-14	AIR PRESSURE REGULATOR
15	94-800-15	AIR PRESSURE GAUGE
16	94-800-16	BALL VALVE
17	94-800-17	TEE FITTING
18	94-800-18	HEX NIPPLE
19	94-800-19	RETAINING PIN E-CLIP
20	94-800-20	SAFTY VALVE ADAPTOR

ITEM	PART No.	DESCRIPTION
21	94-800-21	JAM NUT
22	94-800-22	SAFTY VALVE BALL
23	94-800-23	NEEDLE ROD
24	94-800-24	SPRING
25	94-800-25	SAFTY VALVE HOUSING
26	94-800-26	PRESSURE RELIEF ADAPTOR
27	94-800-27	O-RING
28	94-800-28	PRESSURE RELIEF SCREW
29	94-800-29	FLUID FITTING BODY
30	94-800-30	FLUID FITTING INSERT
31	94-800-31	AIR INLET DEFUSER
32	94-800-32	PLUG
33	94-800-33	WRENCH
34	94-800-34	AIR INLET ADAPTOR
35	94-800-35	SWIVEL FITTING
36	94-801	PRESSURE RELIEF VALVE ASSEMBLY
37	94-802	SAFTY RELIEF VALVE ASSEMBLY
38	94-803	AIR REGULATOR ASSEMBLY
39	94-804-A	PRESSURE TANK LINER (ALUM.)
	94-804-SS	PRESSURE TANK LINER (S.S.)

**\*Part#94-803, 94-804A, and 94-804SS are optional equipment**

## 94-810 2-1/2 Gallon Pressure Tank on Casters

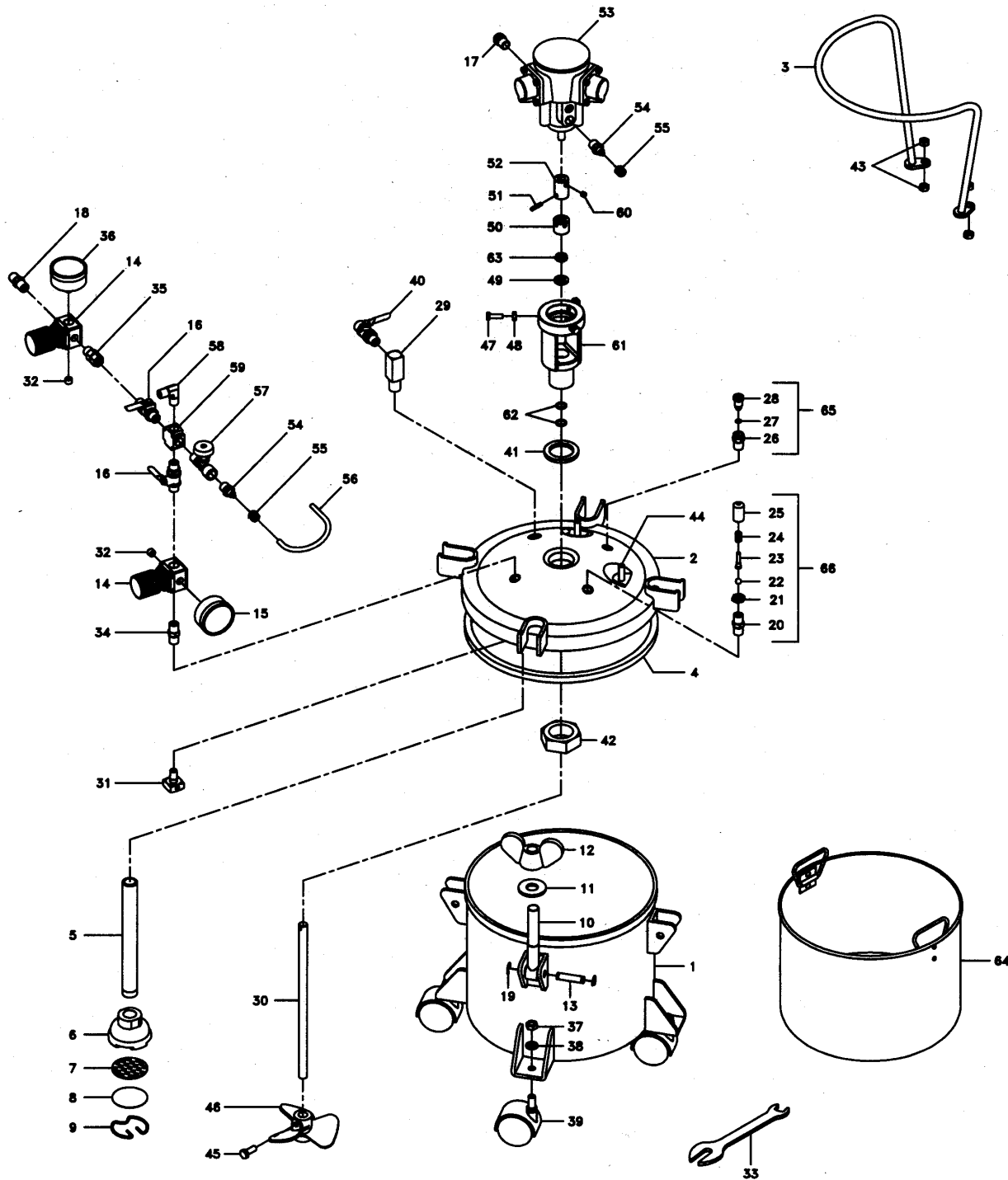


ITEM	PART No.	DESCRIPTION
	94-810	2-1/2 GAL. PRESSURE TANK ASSEMBLY
1	94-810-1	2-1/2 GAL. PRESSURE TANK
2	94-800-2	PRESSURE TANK LID
3	94-800-3	HANDLE
4	94-800-4	LID GASKET
5	94-800-5	FLUID PIPE
6	94-800-6	FILTER PAD
7	94-800-7	FILTER BASE
8	94-800-8	FILTER SCREEN
9	94-800-9	RETAINING SPRING
10	94-800-10	EYE BOLT
11	94-800-11	FLAT WASHER
12	94-800-12	WING NUT
13	94-800-13	RETAINING PIN
14	94-800-14	AIR PRESSURE REGULATOR
15	94-800-15	AIR PRESSURE GAUGE
16	94-800-16	BALL VALVE
17	94-800-17	TEE FITTING
18	94-800-18	HEX NIPPLE
19	94-800-19	RETAINING PIN E-CLIP

ITEM	PART No.	DESCRIPTION
20	94-800-20	SAFTY VALVE ADAPTOR
21	94-800-21	JAM NUT
22	94-800-22	SAFTY VALVE BALL
23	94-800-23	NEEDLE ROD
24	94-800-24	SPRING
25	94-800-25	SAFTY VALVE HOUSING
26	94-800-26	PRESSURE RELIEF ADAPTOR
27	94-800-27	O-RING
28	94-800-28	PRESSURE RELIEF SCREW
29	94-800-29	FLUID FITTING BODY
30	94-800-30	FLUID FITTING INSERT
31	94-800-31	AIR INLET DEFUSER
32	94-800-32	PLUG
33	94-800-33	WRENCH
34	94-800-34	AIR INLET ADAPTOR
35	94-810-2	HEX NUT
36	94-810-3	LOCK WASHER
37	94-810-4	WHEEL
38	94-801	PRESSURE RELIEF VALVE ASSEMBLY
39	94-802	SAFTY RELIEF VALVE ASSEMBLY

# 94-815

## 2 1/2 Gallon Paint Tank on Casters with Dual Regulation



## 94-815 Parts Identification

ITEM	AMT.	ACCUSPRAY PART NO.	DESCRIPTION
1	1	94-810-1	TANK ~ 2-1/2 GAL. PRESSURE
2	1	94-815-2	LID ~ PRESSURE TANK
3	1	94-815-3	HANDLE
4	1	94-800-4	GASKET ~ LID
5	1	94-800-5	PIPE ~ FLUID
6	1	94-800-6	PAD ~ FLUID FILTER
7	1	94-800-7	BASE ~ FLUID FILTER
8	1	94-800-8	SCREEN ~ FILTER
9	1	94-800-9	SPRING ~ RETAINING
10	4	94-800-10	BOLT ~ EYE
11	4	94-800-11	WASHER ~ FLAT
12	4	94-800-12	NUT ~ WING
13	4	94-800-13	PIN ~ EYE BOLT RETAINING
14	2	94-800-14	REGULATOR ~ AIR PRESSURE
15	1	94-800-15	GAUGE ~ 0-100 PSI AIR
16	2	94-800-16	VALVE ~ 1/4" x 1/4" BALL
17	1	94-834-17	MUFFLER ~ PNEUMATIC AGITATOR MOTOR
18	1	94-800-18	NIPPLE ~ 1/4" NPT HEX
19	8	94-800-19	RING ~ E-CLIP RETAINING
20	1	94-800-20	ADAPTOR ~ SAFTY VALVE
21	1	94-800-21	NUT ~ JAM
22	1	94-800-22	BALL ~ SAFTY VALVE
23	1	94-800-23	ROD ~ NEEDLE
24	1	94-800-24	SPRING
25	1	94-800-25	HOUSING ~ SAFTY VALVE
26	1	94-800-26	ADAPTOR ~ PRESSURE RELIEF
27	1	94-800-27	O-RING
28	1	94-800-28	SCREW ~ PRESSURE RELIEF
29	1	94-800-29	BODY ~ FLUID OUTLET FITTING
30	1	94-815-1	ROD ~ FLUID AGITATOR CONNECTING
31	1	94-800-31	DEFUSER ~ AIR INLET
32	2	94-800-32	PLUG ~ 1/8" NPT
33	1	94-800-33	WRENCH
34	1	94-800-34	ADAPTOR ~ AIR INLET

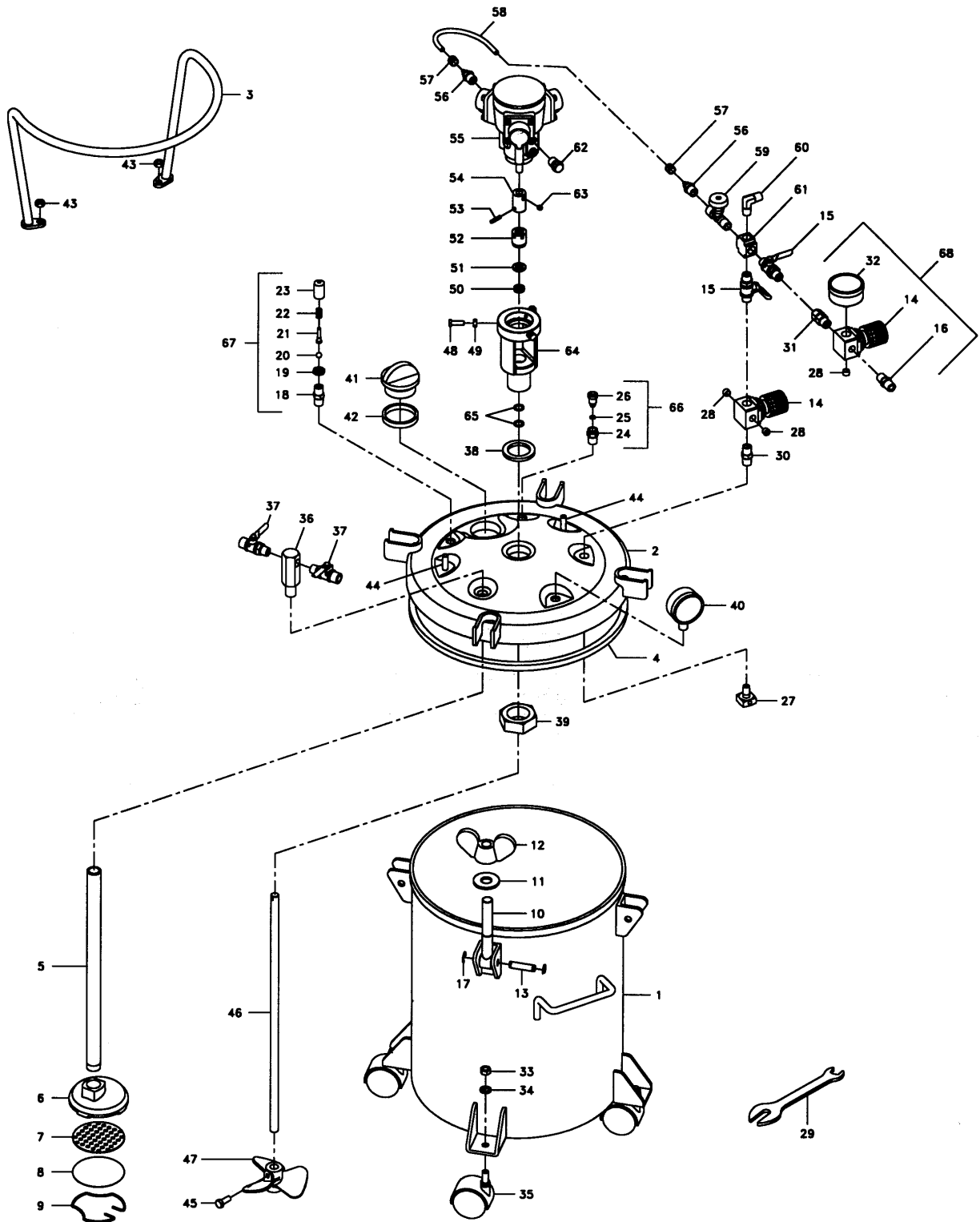
ITEM	AMT.	ACCUSPRAY PART NO.	DESCRIPTION
35	1	94-800-35	FITTING ~ SWIVEL
36	1	94-800-36	GAUGE ~ 0-150 PSI AIR
37	4	94-810-2	NUT ~ JAM
38	4	94-810-3	WASHER ~ LOCK
39	4	94-810-4	WHEEL
40	1	94-820-11	VALVE ~ 1/4" x 3/8" BALL
41	1	94-820-13	SEAL ~ AGITATOR PORT
42	1	94-820-14	NUT ~ HEX
43	4	94-820-18	NUT ~ HEX
44	2	94-820-19	SCREW ~ SOC. HD. CAP
45	1	94-824-3	SCREW ~ SOC. HD. CAP
46	1	94-834-2	PROPELLER ~ FLUID AGITATOR
47	3	94-834-3	SCREW ~ HEX HD. MACH.
48	3	94-834-4	NUT ~ HEX
49	1	94-834-6	BUSHING ~ AGITATOR ROD CENTERING (NYLON)
50	1	94-834-7	GUIDE ~ FLUID AGITATOR ROD
51	1	94-834-8	PIN ~ ROLL
52	1	94-834-9	COLLAR ~ FLUID AGITATOR ROD
53	1	94-834-10	MOTOR ~ PNEUMATIC FLUID AGITATOR
54	2	94-834-11	FITTING ~ TUBE COMPRESSION
55	2	94-834-12	NUT ~ TUBE COMPRESSION FITTING
56	1	94-834-13	TUBE ~ AIR
57	1	94-834-14	VALVE ~ AIR CONTROL
58	1	94-834-15	ELBOW ~ 1/4" NPT 90°
59	1	94-834-16	FITTING ~ 1/4" NPT 4-WAY CROSS
60	1	94-834-18	SCREW ~ SET
61	1	94-834-19	BASE ~ PNEUMATIC AGITATOR MOTOR
62	2	94-834-20	O-RING ~ ROD GUIDE
63	1	94-834-21	PACKING SET ~ AGITATOR ROD SEAL (LEATHER)
64	-	94-804-A	LINER ~ PAINT TANK (ALUMINUM)
		94-804-SS	LINER ~ PAINT TANK (STAINLESS STEEL)
65	-	94-801	ASS'Y ~ PRESSURE RELIEF VALVE
66	-	94-802	ASS'Y ~ SAFTY RELIEF VALVE



## 94-820 Parts Identification

ITEM	PART NO.	DESCRIPTION
	94-820	5 GAL. PRESSURE TANK ASSEMBLY
1	94-820-1	5 GAL. PRESSURE TANK
2	94-820-2	PRESSURE TANK LID
3	94-820-3	HANDLE
4	94-820-4	LID GASKET
5	94-820-5	FLUID PIPE
6	94-820-6	FILTER PAD
7	94-820-7	FILTER BASE
8	94-820-8	FILTER SCREEN
9	94-820-9	RETAINING SPRING
10	94-800-10	EYE BOLT
11	94-800-11	FLAT WASHER
12	94-800-12	WING NUT
13	94-800-13	RETAINING PIN
14	94-800-14	AIR PRESSURE REGULATOR
15	94-820-15	AIR PRESSURE GAUGE
16	94-800-16	BALL VALVE
17	94-800-17	TEE FITTING
18	94-800-18	HEX NIPPLE
19	94-800-19	RETAINING PIN E-CLIP
20	94-800-20	SAFTY VALVE ADAPTOR
21	94-800-21	JAM NUT
22	94-800-22	SAFTY VALVE BALL
23	94-800-23	NEEDLE ROD
24	94-800-24	SPRING
25	94-800-25	SAFTY VALVE HOUSING
26	94-800-26	PRESSURE RELIEF ADAPTOR
27	94-800-27	O-RING
28	94-800-28	PRESSURE RELIEF SCREW
29	94-820-10	FLUID OUTLET ADAPTOR
30	94-820-11	BALL VALVE
31	94-800-31	AIR INLET DEFUSER
32	94-800-32	PLUG
33	94-800-33	WRENCH
34	94-800-34	AIR INLET ADAPTOR
35	94-810-2	HEX NUT
36	94-810-3	LOCK WASHER
37	94-810-4	WHEEL
38	94-820-12	AGITATOR PORT PLUG
39	94-820-13	AGITATOR PORT SEAL
40	94-820-14	HEX NUT
41	94-820-16	PLUG
42	94-820-17	PLUG SEAL
43	94-820-18	HEX NUT
44	94-820-19	CAP SCREW
45	94-801	PRESSURE RELIEF VALVE ASSEMBLY
46	94-802	SAFTY RELIEF VALVE ASSEMBLY

# 94-823A Air Agitated 5 Gallon Paint Tank

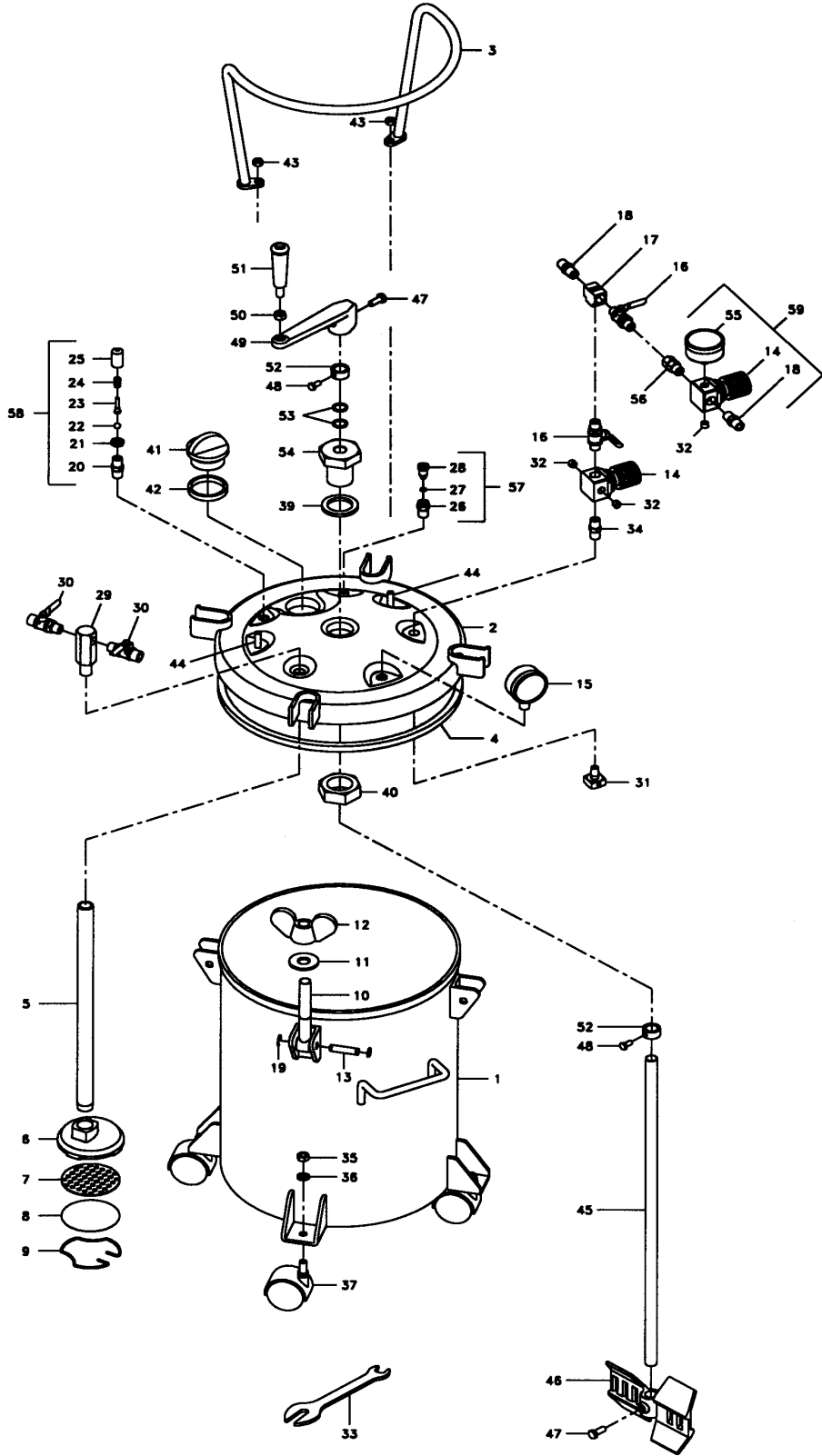


## 94-823A Parts Identification

ITEM	PART NO.	DESCRIPTION
1	94-820-1	5 GAL. PRESSURE TANK
2	94-820-2	PRESSURE TANK LID
3	94-820-3	HANDLE
4	94-820-4	LID GASKET
5	94-820-5	FLUID PIPE
6	94-820-6	FLUID FILTER PAD
7	94-820-7	FLUID FILTER BASE
8	94-820-8	FILTER SCREEN
9	94-820-9	RETAINING SPRING
10	94-800-10	EYE BOLT
11	94-800-11	FLAT WASHER
12	94-800-12	WING NUT
13	94-800-13	RETAINING PIN
14	94-800-14	AIR PRESSURE REGULATOR
15	94-800-16	BALL VALVE
16	94-800-18	HEX NIPPLE
17	94-800-19	RETAINING PIN E-CLIP
18	94-800-20	SAFTY VALVE ADAPTOR
19	94-800-21	JAM NUT
20	94-800-22	SAFTY VALVE BALL
21	94-800-23	NEEDLE ROD
22	94-800-24	SPRING
23	94-800-25	SAFTY VALVE HOUSING
24	94-800-26	PRESSURE RELIEF ADAPTOR
25	94-800-27	O-RING
26	94-800-28	PRESSURE RELIEF SCREW
27	94-800-31	AIR INLET DEFUSER
28	94-800-32	PLUG
29	94-800-33	WRENCH
30	94-800-34	AIR INLET ADAPTOR
31	94-800-35	SWIVEL FITTING
32	94-800-36	AIR PRESSURE GAUGE
33	94-810-2	JAM NUT
34	94-810-3	LOCK WASHER

ITEM	PART NO.	DESCRIPTION
35	94-810-4	WHEEL
36	94-820-10	FLUID OUTLET ADAPTOR
37	94-820-11	BALL VALVE
38	94-820-13	AGITATOR PORT SEAL
39	94-820-14	HEX NUT
40	94-820-15	AIR PRESSURE GAUGE
41	94-820-16	PLUG
42	94-820-17	PLUG SEAL
43	94-820-18	HEX NUT
44	94-820-19	CAP SCREW
45	94-824-3	CAP SCREW
46	94-834-1	AGITATOR CONNECTING ROD
47	94-834-2	FLUID AGITATOR PROPELLER
48	94-834-3	SCREW
49	94-834-4	HEX NUT
50	94-834-5	AGITATOR ROD SEAT
51	94-834-6	AGITATOR ROD SEAL
52	94-834-7	AGITATOR ROD GUIDE
53	94-834-8	ROLL PIN
54	94-834-9	AGITATOR ROD COLLAR
55	94-834-10	FLUID AGITATOR MOTOR
56	94-834-11	COMPRESSION FITTING
57	94-834-12	COMPRESSION NUT
58	94-834-13	AIR TUBE
59	94-834-14	AIR CONTROL VALVE
60	94-834-15	90° ELBOW
61	94-834-16	4-WAY CROSS FITTING
62	94-834-17	AGITATOR MOTOR MUFFLER
63	94-834-18	SET SCREW
64	94-834-19	AGITATOR MOTOR BASE
65	94-834-20	ROD GUIDE O-RING
66	94-801	PRESSURE RELIEF VALVE ASSEMBLY
67	94-802	SAFTY RELIEF VALVE ASSEMBLY
68	94-803	AIR REGULATOR ASSEMBLY

# 94-823M Manual Agitated 5 Gallon Paint Tank



## 94-823M Parts Identification

ITEM	PART NO.	DESCRIPTION
1	94-820-1	5 GAL. PRESSURE TANK
2	94-820-2	PRESSURE TANK LID
3	94-820-3	HANDLE
4	94-820-4	LID GASKET
5	94-820-5	FLUID PIPE
6	94-820-6	FILTER PAD
7	94-820-7	FILTER BASE
8	94-820-8	FILTER SCREEN
9	94-820-9	RETAINING SPRING
10	94-800-10	EYE BOLT
11	94-800-11	FLAT WASHER
12	94-800-12	WING NUT
13	94-800-13	RETAINING PIN
14	94-800-14	AIR PRESSURE REGULATOR
15	94-820-15	AIR PRESSURE GAUGE
16	94-800-16	BALL VALVE
17	94-800-17	TEE FITTING
18	94-800-18	HEX NIPPLE
19	94-800-19	RETAINING PIN E-CLIP
20	94-800-20	SAFTY VALVE ADAPTOR
21	94-800-21	JAM NUT
22	94-800-22	SAFTY VALVE BALL
23	94-800-23	NEEDLE ROD
24	94-800-24	SPRING
25	94-800-25	SAFTY VALVE HOUSING
26	94-800-26	PRESSURE RELIEF ADAPTOR
27	94-800-27	O-RING
28	94-800-28	PRESSURE RELIEF SCREW
29	94-820-10	FLUID OUTLET ADAPTOR
30	94-820-11	BALL VALVE
31	94-800-31	AIR INLET DEFUSER
32	94-800-32	PLUG
33	94-800-33	WRENCH
34	94-800-34	AIR INLET ADAPTOR
35	94-810-2	HEX NUT
36	94-810-3	LOCK WASHER
37	94-810-4	WHEEL
38	94-820-12	AGITATOR PORT PLUG
39	94-820-13	AGITATOR PORT SEAL
40	94-820-14	HEX NUT
41	94-820-16	PLUG
42	94-820-17	PLUG SEAL
43	94-820-18	HEX NUT
44	94-820-19	CAP SCREW
45	94-824-1	CONNECTING ROD
46	94-824-2	AGITATOR PROPELLER
47	94-824-3	CAP SCREW
48	94-824-4	CAP SCREW
49	94-824-5	HANDLE CRANK
50	94-824-6	HEX NUT
51	94-824-7	HANDLE ASSEMBLY
52	94-824-8	CONNECTING ROD COLLAR
53	94-824-9	O-RING
54	94-824-10	AGITATOR ROD GUIDE
55	94-800-15	AIR PRESSURE GAUGE
56	94-800-35	SWIVEL ADAPTOR
57	94-801	PRESSURE RELIEF VALVE ASSEMBLY
58	94-802	SAFTY RELIEF VALVE ASSEMBLY
59	94-803	AIR REGULATOR ASSEMBLY

---

## Accessories

### Industrial 2-1/2 Gallon Paint Tanks

#61-2344030	Fluid Hose Assembly (30' Long, 3/8" ID)
#60-5433030	High Pressure Air Hose Assembly (30' Long, 5/16" ID)
#98-077-35	Fluid Hose Assembly (35' Long, 3/8" ID)
#98-076-35	Air Hose Assembly (35' Long, 5/16"ID)
#94-804-A	Aluminum Paint Tank Liner
#94-804-SS	Stainless Steel Tank Liner
#94-803	Air Regulator Assembly (For Dual Regulation)
#94-825-5	Lid Gasket – Industrial 2-1/2 Gallon models
#94-808	Polyethylene Paint Tank Liner – Disposable
#94-808/12	Polyethylene Paint Tank Liner – Disposable Pack of 12

---

### Industrial 5 Gallon Paint Tanks

#61-2344030	Fluid Hose Assembly (30' Long, 3/8" ID)
#60-5433030	High Pressure Air Hose Assembly (30' Long, 5/16" ID)
#98-077-35	Fluid Hose Assembly (35' Long, 3/8" ID)
#98-076-35	Air Hose Assembly (35' Long, 5/16"ID)
#94-803	Air Regulator Assembly (For Dual Regulation)
#94-820-4	Lid Gasket – Industrial 5 Gallon models
#94-824	Manual Agitator Kit
#94-834	Air Agitator Kit
#94-826	Disposable 5 Gallon Paint Tank Liner
#94-827	5 Gallon Stainless Steel Liner

---

## Industrial Paint Tank Assemblies

### 2-1/2 Gallon Tank W/O Wheels

Part #	<u>94-800</u>	<u>94-805</u>	<u>94-806</u>	<u>94-807</u>
Regulation	Single	Dual	Single	Dual
Fluid Agitation	-	-	-	-
Aluminum Liner	-	-	Yes	Yes

---

### 2-1/2 Gallon Tank With Wheels

Part #	<u>94-810</u>	<u>94-811</u>	<u>94-812</u>	<u>94-814</u>	<u>94-815</u>
Regulation	Single	Dual	Single	Dual	Dual
Fluid Agitation	-	-	-	-	Air
Aluminum Liner	-	-	Yes	-	-
Stainless Steel Liner	-	-	-	Yes	-

---

### 5 Gallon Tank With Wheels

Part #	<u>94-820</u>	<u>94-821</u>	<u>94-822A</u>	<u>94-822M</u>	<u>94-823A</u>	<u>94-823M</u>
Regulation	Single	Dual	Single	Single	Dual	Dual
Fluid Agitation	-	-	Air	Manual	Air	Manual

---

To order additional copies of this manual, call Accuspray  
Customer Service at 1-800-618-6860  
Or fax your request to (440) 498-9815  
Visit us online at: [www.accuspray.net](http://www.accuspray.net)  
Request Literature Number SM-PFS-0104

#### LIMITED WARRANTY

Accuspray warrants all equipment manufactured by and bearing its name to be free from defects in material and workmanship on the date of sale by an authorized Accuspray distributor to the original purchaser for use. Except as expressly stated in any Accuspray Special, Extended or Limited Warranty provided in writing by Accuspray, Accuspray shall for a period of twelve months from the date of sale, repair or replace any part of the equipment proven defective. This warranty applies only when the equipment is installed, operated and maintained in accordance with Accuspray's written recommendations.

This warranty does not cover, and Accuspray shall not be liable for, normal wear and tear components, any malfunction, damage, or wear caused by faulty installation, misapplication, abrasion, corrosion, inadequate or improper maintenance, negligence, accident, tampering, alteration or substitution of non-Accuspray component parts. Nor shall Accuspray be liable for malfunction, damage, or wear caused by the incompatibility with Accuspray equipment of structures, accessories, equipment or materials not supplied by Accuspray, or the improper design, manufacture, installation, operation or maintenance of structures, accessories, equipment or materials not supplied by Accuspray.

This warranty is conditional upon the prepaid return of the equipment claimed to be defective to an authorized Accuspray Service Center or to Accuspray, to verify the claimed defect. If the claimed defect is verified to be covered by this warranty, Accuspray will repair or replace free of charge any defective parts and the equipment will be returned to the original purchaser freight paid. If inspection of the equipment does not disclose a valid warranty claim, repairs, if any, will be made at a reasonable charge to the purchaser. These charges may include the cost of inspection, parts, labor, and return transportation.

**Disclaimer and Limitations.** The terms of this warranty constitute Accuspray's sole obligation and purchaser's sole and exclusive remedy and are in lieu of any other warranties (express or implied), including warranty of merchantability or warranty of fitness for a particular purpose, or any non-contractual liabilities, including product liabilities based on negligence or strict liability. Every form of liability for direct, special or consequential damages or loss is expressly excluded and denied. In no case shall Accuspray's liability exceed the amount of the purchase price. Any action for breach of warranty must be brought within two (2) years of date of sale.

**Equipment Not Covered by Accuspray Warranty.** Accuspray makes no warranty, and disclaims all implied warranties of merchantability and fitness for a particular purpose with respect to accessories, equipment, materials, or components sold but not manufactured by Accuspray. These items sold but not manufactured by Accuspray (such as electric motors, switches, hose, etc.), are subject to the warranty, if any, of their manufacturer. Accuspray will provide purchaser with reasonable assistance in making any claim for breach of these warranties.

Accuspray is a registered trademark of  
Accuspray Application Technologies, Inc.

All other products named in this publication are either trademarks or registered  
Trademarks of their respective owners.