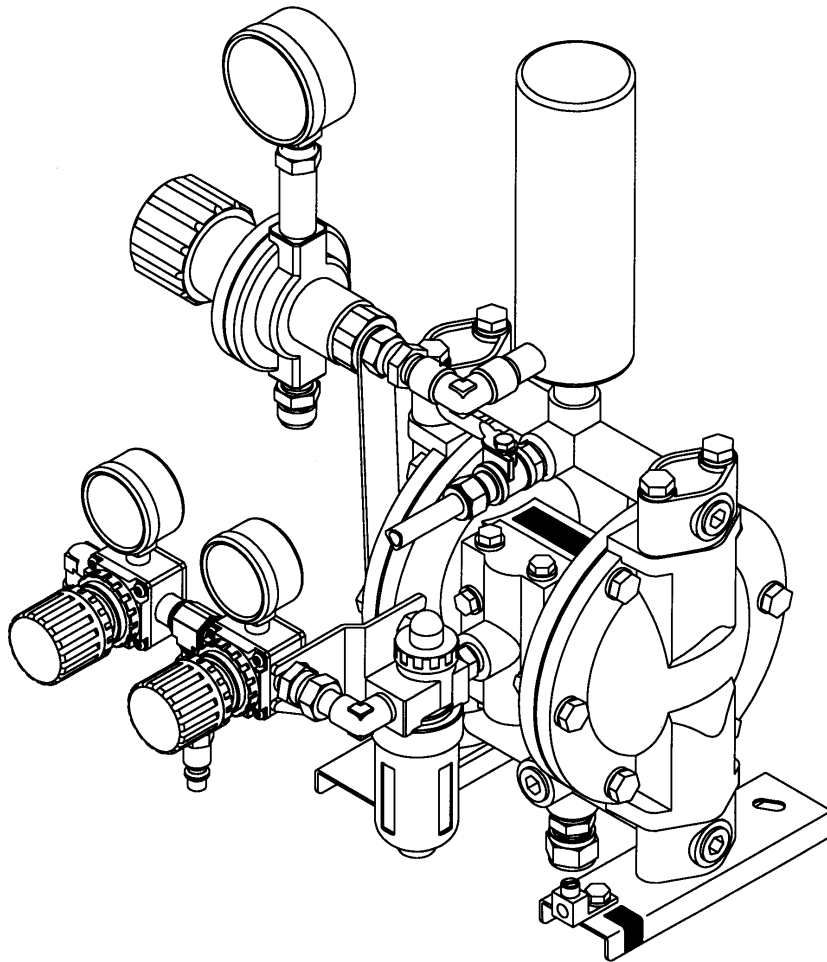




NAUTILUS

3/8" DIAPHRAGM PUMP SYSTEMS

OPERATING MANUAL



SM-375DP-0303



Table of Contents

System Identification	3
Safety Warnings	4
Parts Identification and Function	5
Set Up Procedure	6
Start Up Procedure	7
Spray Operation	8
Shut Down and Care Procedure	9-10
Troubleshooting.....	11
Pump Specifications/Technical Data	12

Parts Identification

399-001&399-002	13
399-101&399-102	14
399-201&399-202	15
399-301&399-302	16
399-401&399-402	17
399-501&399-502	18
399-601&399-602	19
399-701&399-702	20
Pump Breakdown	21
Fluid Regulators.....	23-25
Warranty Information	26
Contact Information	26

NAUTILUS 3/8" PUMPS

SYSTEM IDENTIFICATION

- 399-001 BASIC DIAPHRAGM FLUID PUMP - "HIGH CFM" SPRAYGUN
399-002 BASIC DIAPHRAGM FLUID PUMP - "LOW CFM" SPRAYGUN
- 399-101 5 GAL. PAIL MOUNT (NO FLUID AGITATOR) - "HIGH CFM" SPRAYGUN
399-102 5 GAL. PAIL MOUNT (NO FLUID AGITATOR) - "LOW CFM" SPRAYGUN
- 399-201 5 GAL. PAIL MOUNT (WITH FLUID AGITATOR) - "HIGH CFM" SPRAYGUN
399-202 5 GAL. PAIL MOUNT (WITH FLUID AGITATOR) - "LOW CFM" SPRAYGUN
- 399-301 STAND MOUNT - "HIGH CFM" SPRAYGUN
399-302 STAND MOUNT - "LOW CFM" SPRAYGUN
- 399-401 WALL/DRUM MOUNT - "HIGH CFM" SPRAYGUN
399-402 WALL/DRUM MOUNT - "LOW CFM" SPRAYGUN
- 399-501 DRUM MOUNT - "HIGH CFM" SPRAYGUN
399-502 DRUM MOUNT - "LOW CFM" SPRAYGUN
- 399-601 WALL MOUNT - "HIGH CFM" SPRAYGUN
399-602 WALL MOUNT - "LOW CFM" SPRAYGUN
- 399-701 PORTABLE CART MOUNT - "HIGH CFM" SPRAYGUN
399-702 PORTABLE CART MOUNT - "LOW CFM" SPRAYGUN

Safety Warnings

General Safety

Accuspray's HVLP equipment is for professional use only. Hazards can occur from equipment misuse. Any misuse of the equipment or accessories, such as over pressurizing, modifying parts, using incompatible chemicals and fluids, or using worn or damaged parts can cause serious bodily injury, fire, explosion or property damage. **Read, understand and follow all general safety, safety precautions and user instructions before using your Accuspray equipment.**

- **NEVER** point a spray gun at anyone or any part of the body.
- **NEVER** Place your hand or fingers in front of a spray nozzle.
- **NEVER** try to stop or deflect fluid leaks with your hand or body.
- **NEVER** alter or modify any part of this equipment.
- **CHECK** your spray equipment before each use. Repair or replace worn or damaged parts immediately.
- **ALWAYS** use Accuspray replacement parts. Only these parts were designed to work with your equipment.

Safety Requirements

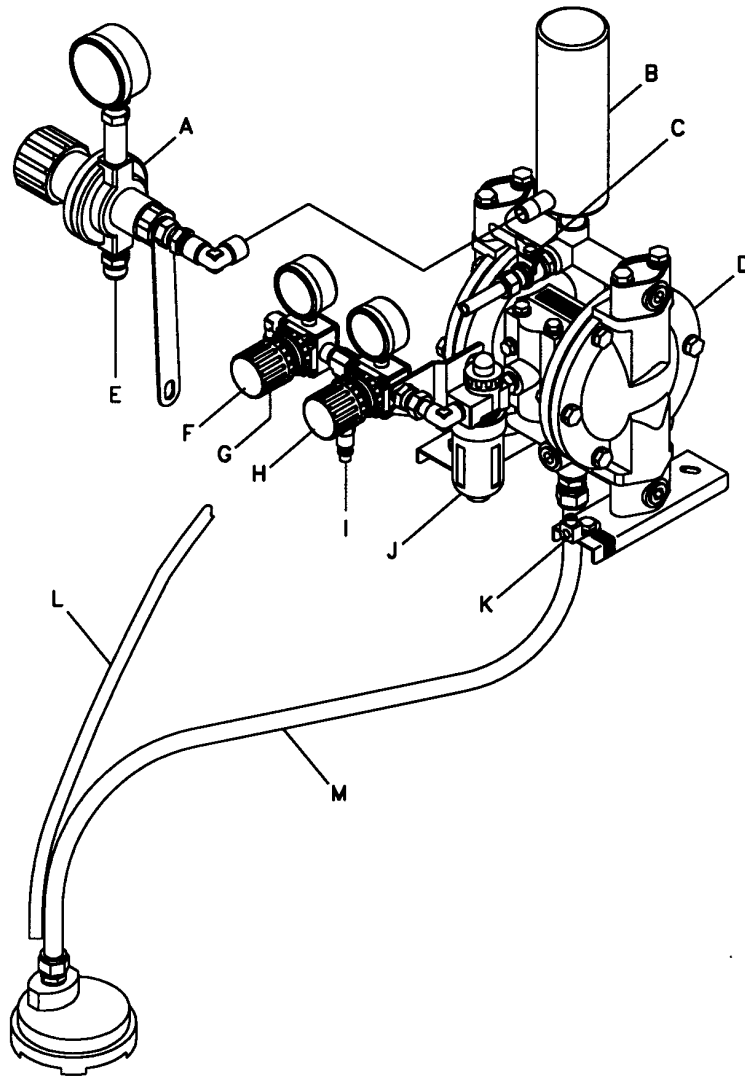
Solvents and coatings can be highly flammable to combustible, especially when sprayed. Adequate exhaust must be provided to keep the air free of accumulations of flammable vapors. Smoking must never be allowed in spray areas. Fire extinguishing equipment must be present in the spray area.

Certain materials may be harmful if inhaled or if there is contact with the skin. Follow the requirements of the Material Safety Data Sheet supplied by the coating manufacturer. Use a respirator whenever there is a chance of inhaling sprayed material. The mask must be compatible with the material being sprayed and its concentration. Safety equipment must be NIOSH approved.

Certain solvents containing Methylene Chloride and Trichloromethane are not chemically compatible with aluminum or zinc. The solvents reaction can become violent or explosive. If you are in doubt whether a coating or cleaning material is compatible, contact your material supplier.

Improper operation or maintenance may create a hazard. Personnel must be given training. Instructions and safety precautions must be read and understood. Comply with your local, state, and national codes governing ventilation, fire protection, operation, maintenance, and housekeeping.

PARTS IDENTIFICATION AND FUNCTION



A	FLUID REGULATOR ASSEMBLY	REGULATES FLUID PRESSURE SUPPLIED TO SPRAYGUN
B	SURGE SUPPRESSION CHAMBER	REDUCES FLUID PULSATION WHEN PAINTING
C	FLUID PRIME VALVE	OPEN VALVE TO PRIME PUMP / CLOSE VALVE WHEN PAINTING
D	3/8" FLUID DIAPHRAGM PUMP	UNIVERSAL TO ALL "399 SERIES" FLUID PUMP
E	FLUID OUTLET FITTING	FLUID HOSE CONNECTION FOR SPRAYGUN
F	SPRAYGUN ATOMIZING AIR REG./GAUGE	REGULATES AIR PRESSURE SUPPLIED TO SPRAYGUN
G	AIR OUTLET FITTING	AIR HOSE CONNECTION FOR SPRAYGUN
H	FLUID PUMP AIR REG. & GAUGE	REGULATES AIR PRESSURE TO FLUID PUMP
I	AIR INLET FITTING	AIR HOSE CONNECTION FROM SUPPLY AIR
J	OIL MIST LUBRICATOR	LUBRICATES FLUID PUMP DIRECTIOINAL VALVE ASS'Y
K	GROUND LUG	CONNECT TO TRUE EARTH GROUND TO PREVENT ELECTRICAL STATIC BUILD-UP
L	FLUID PUMP PRIME HOSE	FLUID RECIRCULATION HOSE
M	FLUID PUMP PICK-UP HOSE	SUBMERGE IN MATERIAL

Set Up Procedure

1. Connect red air hose (part# 97-076-35) to air outlet fitting (Item G, page 5). Connect other end of air hose to air inlet on bottom of gun (see gun manual for proper installation).
2. Connect black fluid hose (part# 97-077-35) to fluid outlet fitting (Item E, page 5). Connect other end of fluid hose to fluid inlet fitting on gun (see gun manual for proper installation).
3. Check pump lubricator (Item J, page 5) fluid level, if level is low, fill with SAE 10 weight non-detergent oil.
4. Ground pump. Locate grounding lug (Item K, page 5). Connect ground wire to lug and opposite wire end to a true earth ground.

****FIRE AND EXPLOSION HAZARD****
SEE STATE AND LOCAL ELECTRICAL CODES
ON GROUNDING THIS EQUIPMENT.
FAILURE TO PROPERLY GROUND
EQUIPMENT CAN RESULT IN SPARKING
THAT MAY IGNITE VOLATILE MATERIALS.

5. Make sure all regulators (Item A, Item F, and Item H, page 5). Are set to 0 (zero) psi. Turn all regulator dials counter clockwise to decrease pressure.
6. Refer to gun owner's manual (included) for additional gun set-up procedures.

Start Up Procedure

1. Connect airline in from compressor to air inlet fitting (Item I, page 5). *All regulators should be set to zero psi. See set up procedure page 6 for instructions.
2. Insert pick-up assembly (Item M, page 5) into fluid to be sprayed.
3. Insert return line assembly (Item L, page 5) into fluid to be sprayed.
4. Open prime/spray valve (Item C, page 5). Open position: Handle of valve is parallel to return line. Closed position: Handle of valve is perpendicular to return line.
*Note: Check to ensure gun is not triggered open.
5. Slowly increase pressure to by turning knob of pump air regulator (Item H, page 5) by turning knob clockwise. Increase pressure until fluid re-circulates through the return line.
6. Close prime/spray valve. Refer to no.4.
7. Pump is now primed and ready to spray.
8. Refer to gun manual (included) for gun set-up procedure.

Spray Operation

With pump primed and prime/spray valve in spray (closed) position:

1. Trigger gun and increase pressure at fluid regulator (Item A, page 5): to obtain a steady fluid stream approximately 6 to 10 inches long.

*Note: Pressure will vary depending on fluid viscosity.

2. If fluid stream cannot be obtained, increase pump air regulator pressure (Item H, page 5).

3. To maintain a steady fluid stream, pump air regulator pressure (Item H, page 5) should be kept approximately 15% higher than fluid regulator pressure (fig. A, page 5).

4. Increase atomizing air pressure at regulator (Item F, page 5) slowly until spray pattern evens out with gun approximately 6 to 8 inches from the surface to be sprayed.

Note: Maximum air pressure at regulator (Item F, page 5) must be kept at 43psi active air (gun trigger open) or below to maintain HVLP compliance.

This pump is designed to operate within a wide range of pressures. To minimize overspray always spray at the lowest possible pressure that produces a well atomized pattern.

*Note: Atomizing air pressure will drop if the air line to gun is extended. The addition of gun regulator (pn# 93-103) to the bottom of the gun will show exact atomizing air pressure.

Shut Down and Care Procedure

****FIRE AND EXPLOSION HAZARD****

To avoid static sparking and material splashing always shut off atomizing air to gun and firmly hold a metal component of the gun to the side of a grounded metal pail during flushing operations.

1. Shut off atomizing air at regulator (Item F, page 5), by turning dial counterclockwise.
2. Remove fluid intake assembly (Item M, page 5) from fluid.
3. Trigger gun to empty fluid remaining in hose.
4. Open prime/spray valve (Item C, page 5) to remove any remaining material from the pump.
5. Insert fluid intake assembly and return line into clean up material.
*Note: Cleaning material should be a compatible thinning material for the product sprayed.
6. Close prime/spray valve to route cleaning material through fluid hose and gun.
7. Trigger gun to flush material line and gun until fluid appears clean.
8. Remove intake assembly from cleaning material and continue to trigger gun until material is completely drained from system.

Shut Down and Care Procedure Cont.

9. Release gun trigger and open prime/spray valve to flush remaining fluid from pump.

10. Remove return line from cleaning material.

11. Wipe unit clean and return all regulators to zero (0) psi.

*Note: Unit should be cleaned after every use to avoid a build up of material in fluid line and pump assembly and ensure proper system operation.

*Note: Refer to gun manual for additional gun cleaning and care operations.

Troubleshooting

****Warning****

To avoid serious injury always relieve pressure and remove all fluids from pump before attempting any pump maintenance or repair. See shut down and care procedures page 9 of this manual for proper pressure relieving procedures.

Problem	Cause	Solution
Pump continues to cycle at stall Or will not hold pressure at stall.	Check valve ball, seat, or o-rings, worn, dirty, damaged, or obstructed.	Clean and/or replace.
Pump does not cycle, or cycles only once.	Check valve ball stuck. Air diverter valve stuck or dirty. Pump outlet clogged.	Clean and/or replace. Use filters on air line in to pump. Check lubricator/ fill with proper oil. Reset by depressing plunger on bottom of director valve assembly.
Fluid in exhaust air.	Ruptured diaphragm. Damaged o-rings. Diaphragm retaining nuts loose on shaft.	Replace. Replace. Tighten to seat fully.
Pump runs erratic	Clogged/restricted fluid inlet. Stuck or leaky valve balls/seats. Ruptured diaphragm. Clogged/restricted exhaust	Inspect/clear Replace/clean Replace. Inspect/clear
Pump leaks fluid from manifold/diaphragm area	Loose bolts. Damaged o-rings.	Tighten bolts. Replace.
Air bubbles in fluid.	Loose suction line. Ruptured diaphragm. Loose inlet manifold/damaged o-ring. Diaphragm retaining nuts loose on shaft/o-ring damaged.	Tighten. Replace. Tighten manifold bolts/replace rings. Tighten/inspect o-ring/ replace.
Pump bleeds excessive air during stall.	Worn director valve, o-rings, piston, or gasket.	Inspect/ replace all director valve components.
Gun Spray Pattern/operational	See gun owners manual supplied with unit.	

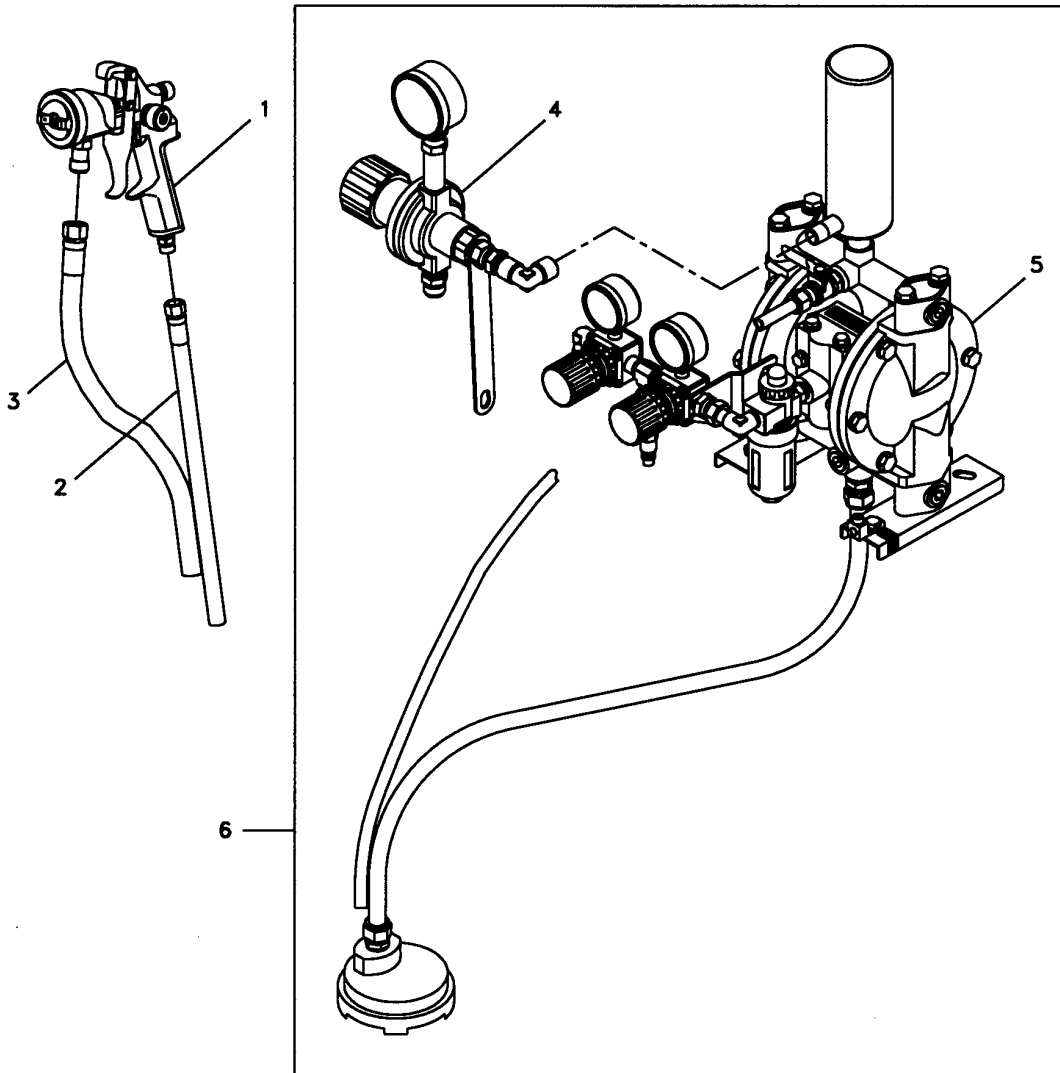
Pump Specifications/Technical Data

Maximum Fluid Working Pressure	75psi
Air Pressure Operating Range	15psi min./75psi max.
Maximum Air Consumption	4 scfm
Maximum Free Flow Delivery	4.5gpm/16 liters
Maximum Pump Speed	300 cycles per min./Water
Maximum Suction Lift	20ft./Wet
Maximum Size Pumpable Solids	1/32"/1.0mm
Air Inlet Size	1/4"
Fluid Inlet Size	3/8"
Fluid Outlet Size	3/8"
Pressure Ratio	1:1
Net Weight	8.8 lbs
Wetted Parts	
Balls	Stainless Steel
Seats	Stainless Steel
Diaphragms	PTFE
Passages	Nickel plated ADC-12
Non-Wetted Parts	
Body	Die cast aluminum alloy ADC-12
Gun (19 or 19c)	
Gun Ratio (Air psi in: Air psi out)	4.3:1
Maximum Air Consumption Model 19	15scfm @ 90psi
Maximum Air Consumption Model 19c	4.5scfm @ 90psi
Maximum Air Inlet Pressure (HVLP)	43psi active air
Gun Air Inlet	1/4"
Body 19	Nickel plated aluminum
Body 19c	Teflon coated aluminum
Needle Tips	Delrin or stainless steel
Needle Shaft	Stainless steel
Fluid Nozzle	Stainless steel
Fluid Passages	Stainless steel

NAUTILUS

3/8" DIAPHRAGM PUMP ASSEMBLY

#399-001 #399-002

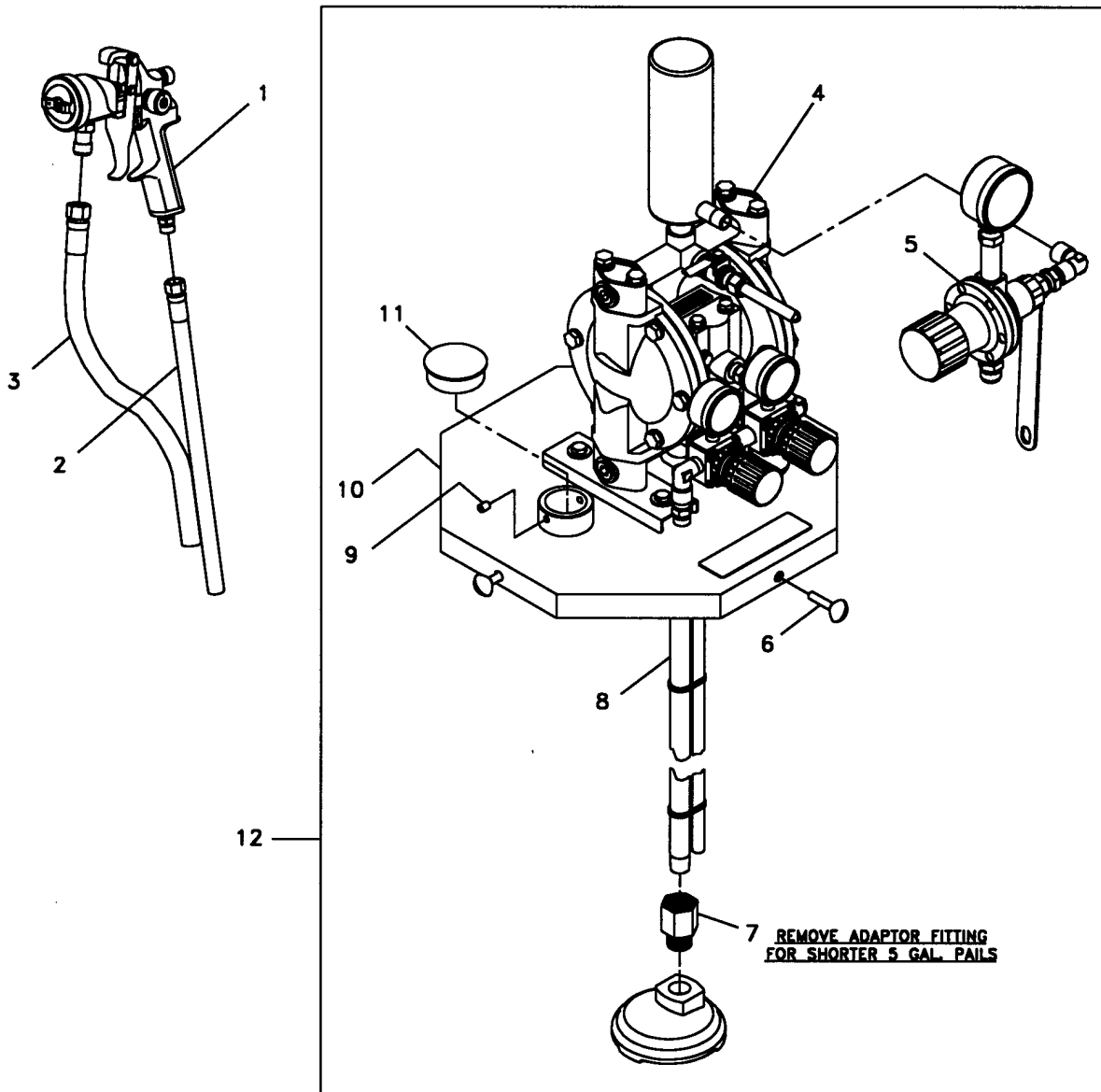


ITEM	PART No.	DESCRIPTION
1	399-001	3/8" DIAPHRAGM FLUID PUMP SYSTEM
	19-1142A	19 SERIES SPRAYGUN (NICKLE PLT'D)
	399-002	3/8" DIAPHRAGM FLUID PUMP SYSTEM
1	19C-12407	19C SERIES SPRAYGUN (BLACK TEFLON)
2	98-076-35	AIR HOSE ASSEMBLY (35' Lg.)
3	98-077-35	FLUID HOSE ASSEMBLY (35' Lg.)
4	94-628	FLUID REGULATOR ASSEMBLY
5	43-7003	3/8" DIAPHRAGM FLUID PUMP
6	43-7013	3/8" DIAPHRAGM FLUID PUMP ASSEMBLY (WITHOUT SPRAYGUN & HOSES)

NAUTILUS

3/8" DIAPHRAGM PUMP 5 GAL. PAIL MOUNT SYSTEM

#399-101 #399-102



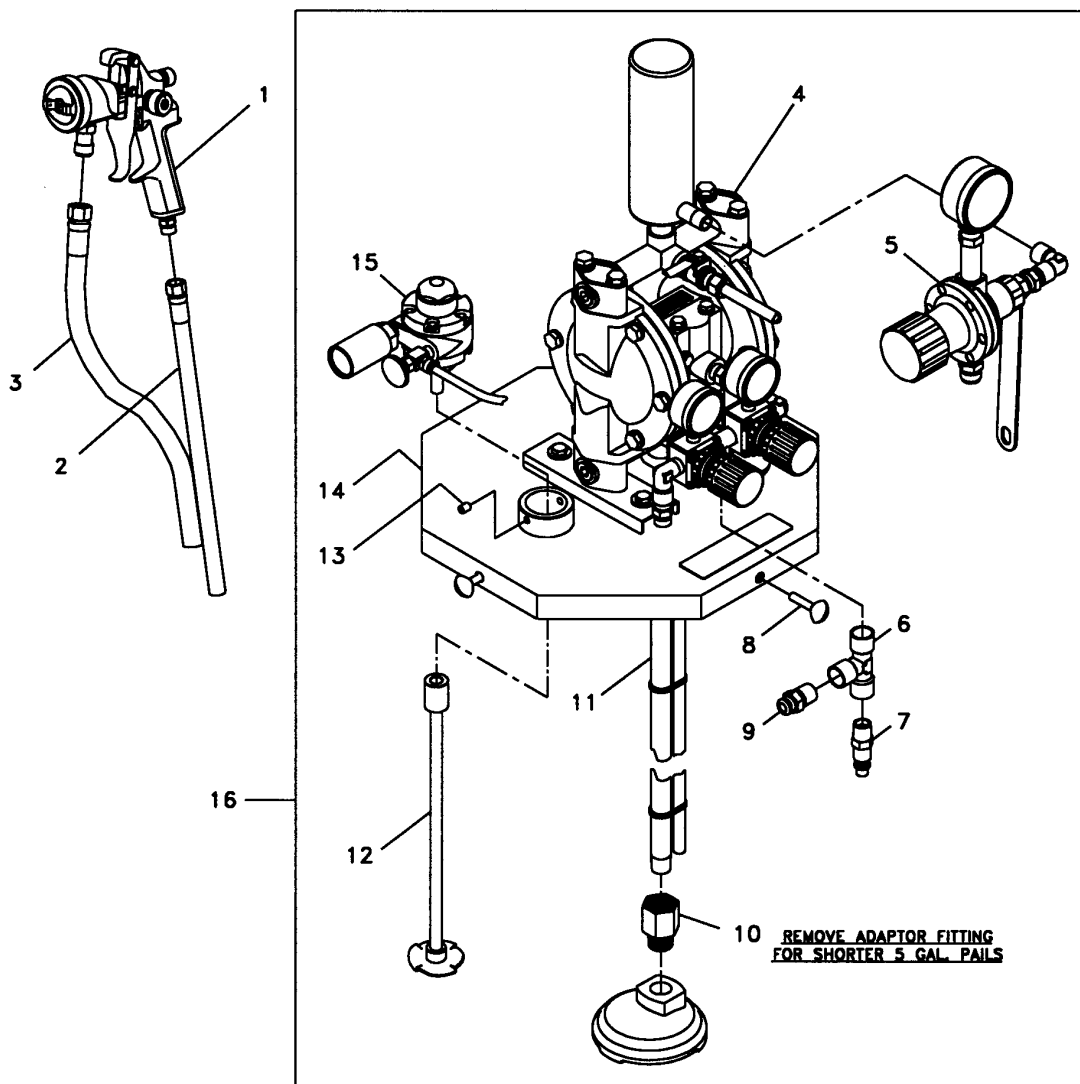
ITEM	PART No.	DESCRIPTION
1	399-101	3/8" DIAPHRAGM FLUID PUMP SYSTEM
	19-1142A	19 SERIES SPRAYGUN (NICKLE PLT'D)
1	399-102	3/8" DIAPHRAGM FLUID PUMP SYSTEM
	19C-12407	19C SERIES SPRAYGUN (BLACK TEFLON)
2	98-076-35	AIR HOSE ASSEMBLY (35' Lg.)
3	98-077-35	FLUID HOSE ASSEMBLY (35' Lg.)
4	43-7003	3/8" DIAPHRAGM FLUID PUMP

ITEM	PART No.	DESCRIPTION
5	94-628	FLUID REGULATOR ASSEMBLY
6	UH-877	THUMB SCREW
7	422-049	ADAPTOR FITTING
8	94-626	FLUID SUCTION TUBE
9	UH-614	SET SCREW
10	94-389	COVER
11	94-118	CAP
12	43-7113	3/8" DIAPHRAGM FLUID PUMP ASSEMBLY (WITHOUT SPRAYGUN & HOSES)

NAUTILUS

3/8" DIAPHRAGM PUMP 5 GAL. AGITATED PUMP MOUNT SYSTEM

#399-201 #399-202



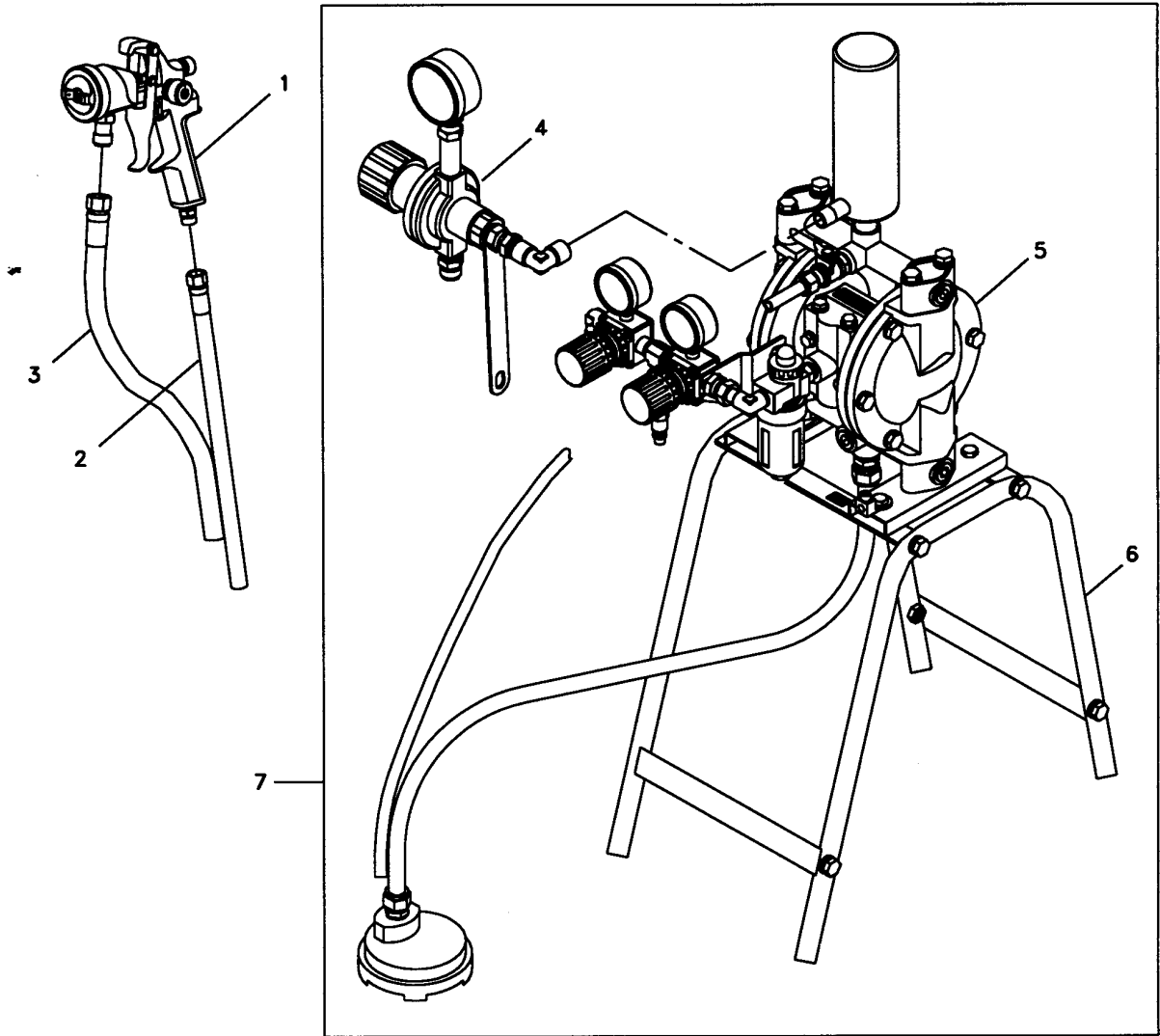
ITEM	PART No.	DESCRIPTION
1	399-201	3/8" DIAPHRAGM FLUID PUMP SYSTEM
	19-1142A	19 SERIES SPRAYGUN (NICKLE PLT'D)
1	399-202	3/8" DIAPHRAGM FLUID PUMP SYSTEM
	19C-12407	19C SERIES SPRAYGUN (BLACK TEFLON)
2	98-076-35	AIR HOSE ASSEMBLY (35' Lg.)
3	98-077-35	FLUID HOSE ASSEMBLY (35' Lg.)
4	43-7003	3/8" DIAPHRAGM FLUID PUMP
5	94-628	FLUID REGULATOR ASSEMBLY
6	UH-1006	TEE FITTING
7	80-936	Q.D. FITTING

ITEM	PART No.	DESCRIPTION
8	UH-877	THUMB SCREW
9	94-345	PRESTOLOK CONNECTOR
10	422-049	ADAPTOR FITTING
11	94-626	FLUID SUCTION TUBE
12	94-469	FLUID AGITATOR
13	UH-614	SET SCREW
14	94-389	COVER
15	94-638	FLUID AGITATOR ASSEMBLY
16	43-7213	3/8" DIAPHRAGM FLUID PUMP ASSEMBLY (WITHOUT SPRAYGUN & HOSES)

NAUTILUS

3/8" DIAPHRAGM PUMP STAND MOUNT SYSTEM

#399-301 #399-302

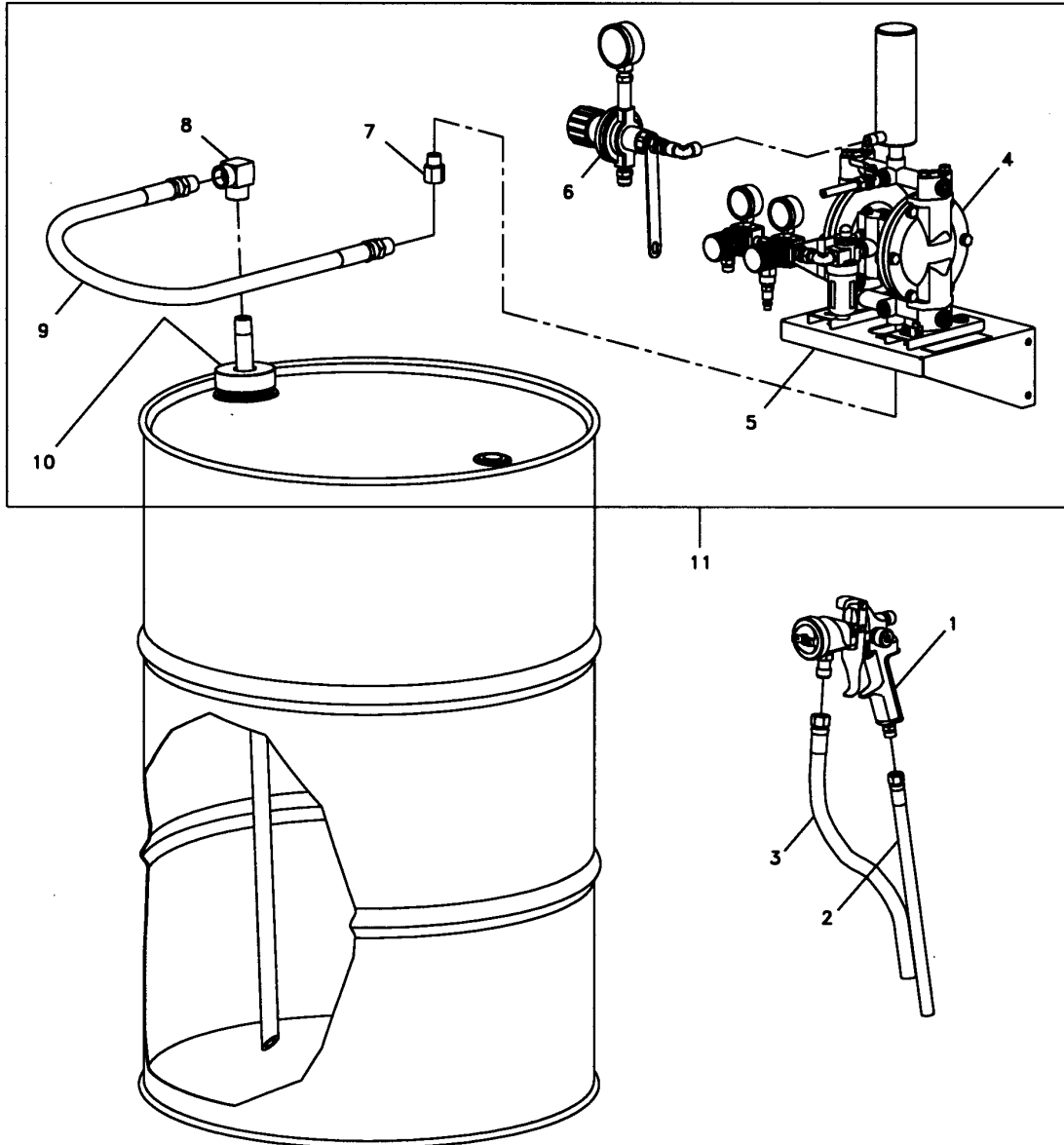


ITEM	PART No.	DESCRIPTION
	399-301	3/8" DIAPHRAGM FLUID PUMP SYSTEM
1	19-1142A	19 SERIES SPRAYGUN (NICKLE PLT'D)
	399-302	3/8" DIAPHRAGM FLUID PUMP SYSTEM
1	19C-12407	19C SERIES SPRAYGUN (BLACK TEFLON)
2	98-076-35	AIR HOSE ASSEMBLY (35' Lg.)
3	98-077-35	FLUID HOSE ASSEMBLY (35' Lg.)
4	94-628	FLUID REGULATOR ASSEMBLY
5	43-7003	3/8" DIAPHRAGM FLUID PUMP
6	94-624	MOUNTING STAND ASSEMBLY
7	43-7313	3/8" DIAPHRAGM FLUID PUMP ASSEMBLY (WITHOUT SPRAYGUN & HOSES)

NAUTILUS

3/8" DIAPHRAGM PUMP WALL/DRUM MOUNT SYSTEM

#399-401 #399-402



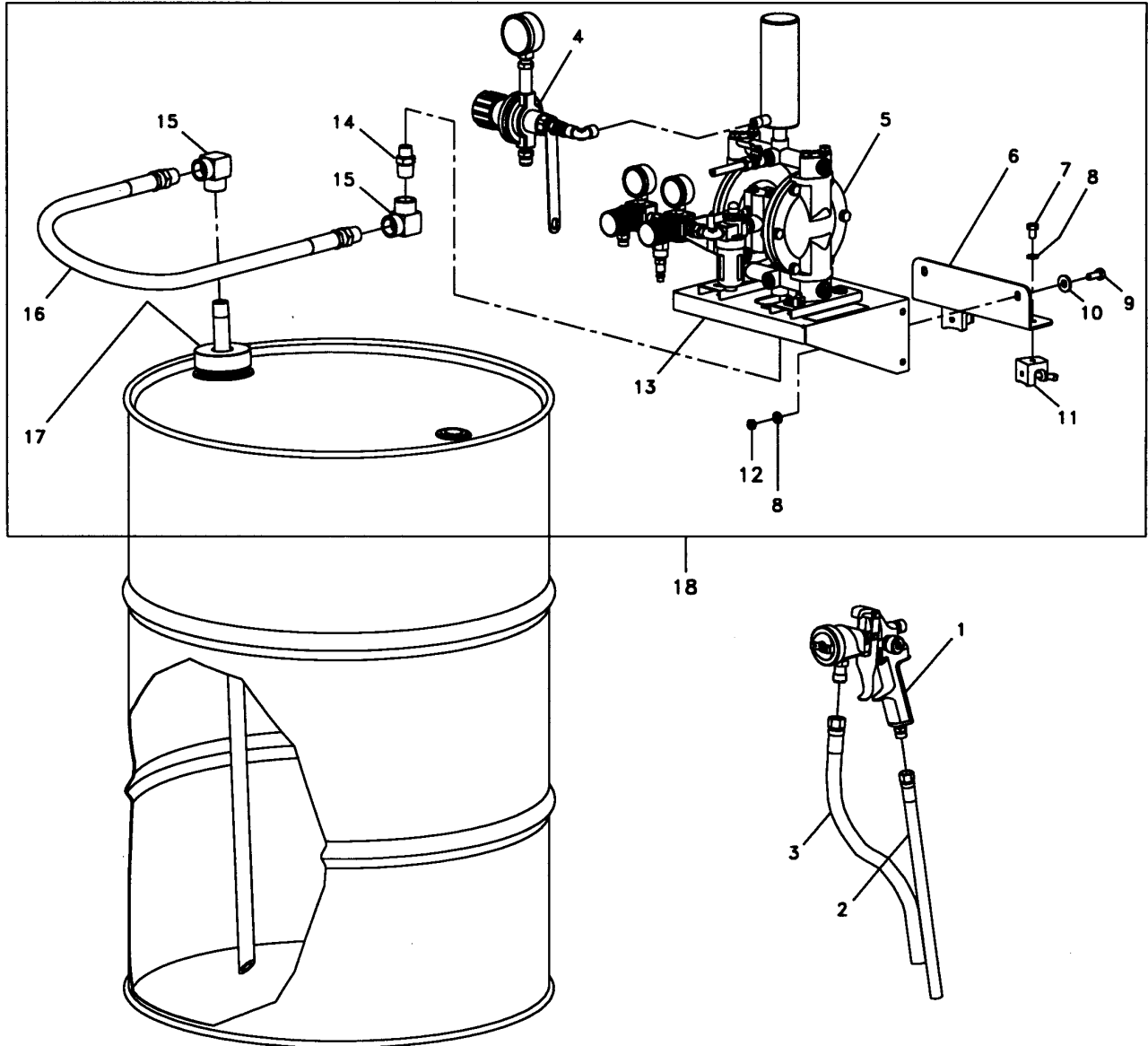
ITEM	PART No.	DESCRIPTION
1	399-401	3/8" DIAPHRAGM FLUID PUMP SYSTEM
	19-1142A	19 SERIES SPRAYGUN (NICKLE PLT'D)
1	399-402	3/8" DIAPHRAGM FLUID PUMP SYSTEM
	19C-12407	19C SERIES SPRAYGUN (BLACK TEFLON)
2	98-076-35	AIR HOSE ASSEMBLY (35' Lg.)
3	98-077-35	FLUID HOSE ASSEMBLY (35' Lg.)
4	43-7003	3/8" DIAPHRAGM FLUID PUMP

ITEM	PART No.	DESCRIPTION
5	98-081	WALL MOUNT BRACKET
6	94-628	FLUID REGULATOR ASSEMBLY
7	UH-1385	ADAPTOR FITTING
8	94-591	90° ELBOW
9	94-592	FLUID HOSE
10	94-480	FLUID SIPHON ASSEMBLY
11	43-7413	3/8" DIAPHRAGM FLUID PUMP ASSEMBLY (WITHOUT SPRAYGUN & HOSES)

NAUTILUS

3/8" DIAPHRAGM PUMP DRUM MOUNT SYSTEM

#399-501 #399-502



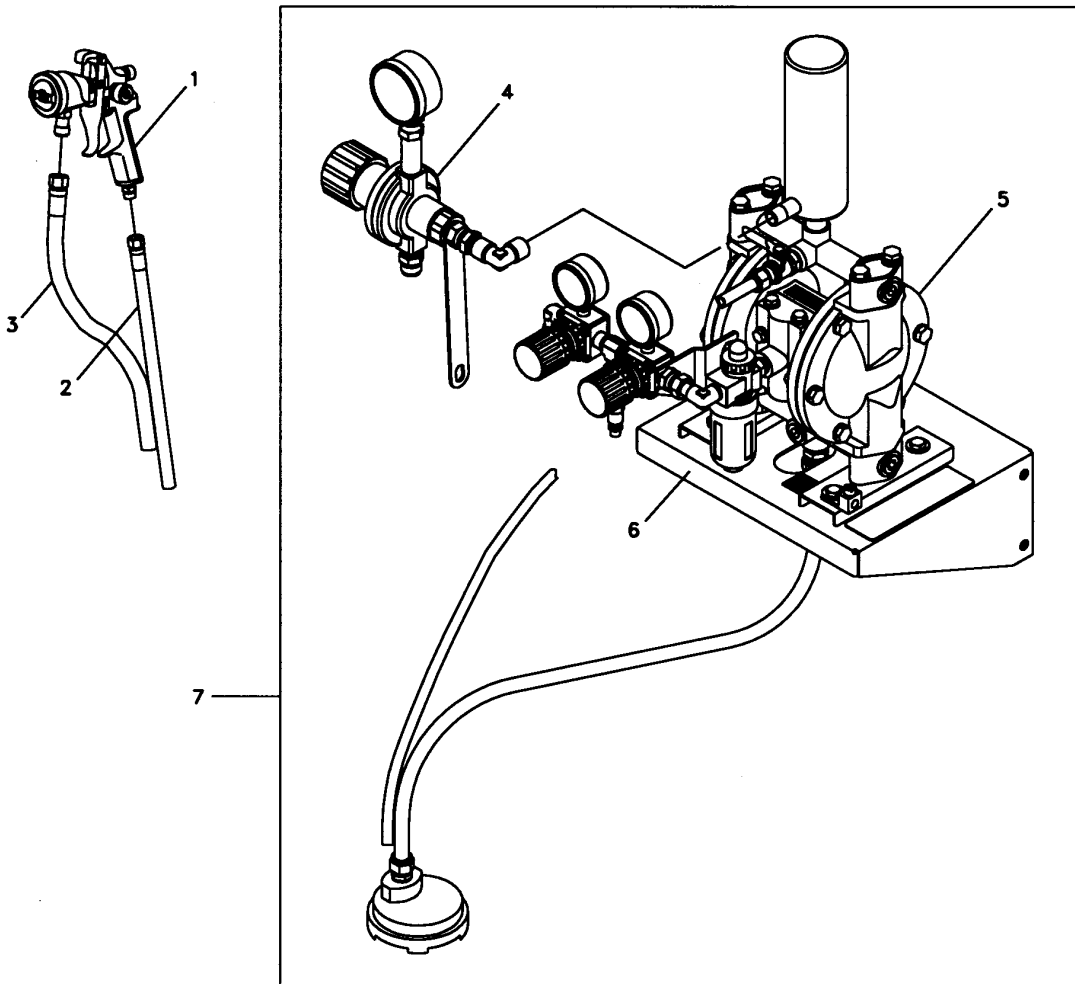
ITEM	PART No.	DESCRIPTION
1	399-501	3/8" DIAPHRAGM FLUID PUMP SYSTEM
	19-1142A	19 SERIES SPRAYGUN (NICKLE PLT'D)
1	399-502	3/8" DIAPHRAGM FLUID PUMP SYSTEM
	19C-12407	19C SERIES SPRAYGUN (BLACK TEFLON)
2	98-076-35	AIR HOSE ASSEMBLY (35' Lg.)
3	98-077-35	FLUID HOSE ASSEMBLY (35' Lg.)
4	94-628	FLUID REGULATOR ASSEMBLY
5	43-7003	3/8" DIAPHRAGM FLUID PUMP
6	94-621	SUPPORT BRACKET
7	UH-465	CAP SCREW
8	UH-417	FLAT WASHER

ITEM	PART No.	DESCRIPTION
9	UH-438	CAP SCREW
10	UH-408	FLAT WASHER
11	UH-1386	CLAMP
12	UH-445	HEX NUT
13	98-081	WALL MOUNT BRACKET
14	UH-1389	REDUCING NIPPLE
15	94-591	90° ELBOW
16	94-622	FLUID HOSE
17	94-480	FLUID SIPHON ASSEMBLY
18	43-7513	3/8" DIAPHRAGM FLUID PUMP ASSEMBLY (WITHOUT SPRAYGUN & HOSES)

NAUTILUS

3/8" DIAPHRAGM PUMP WALL MOUNT SYSTEM

#399-601 #399-602

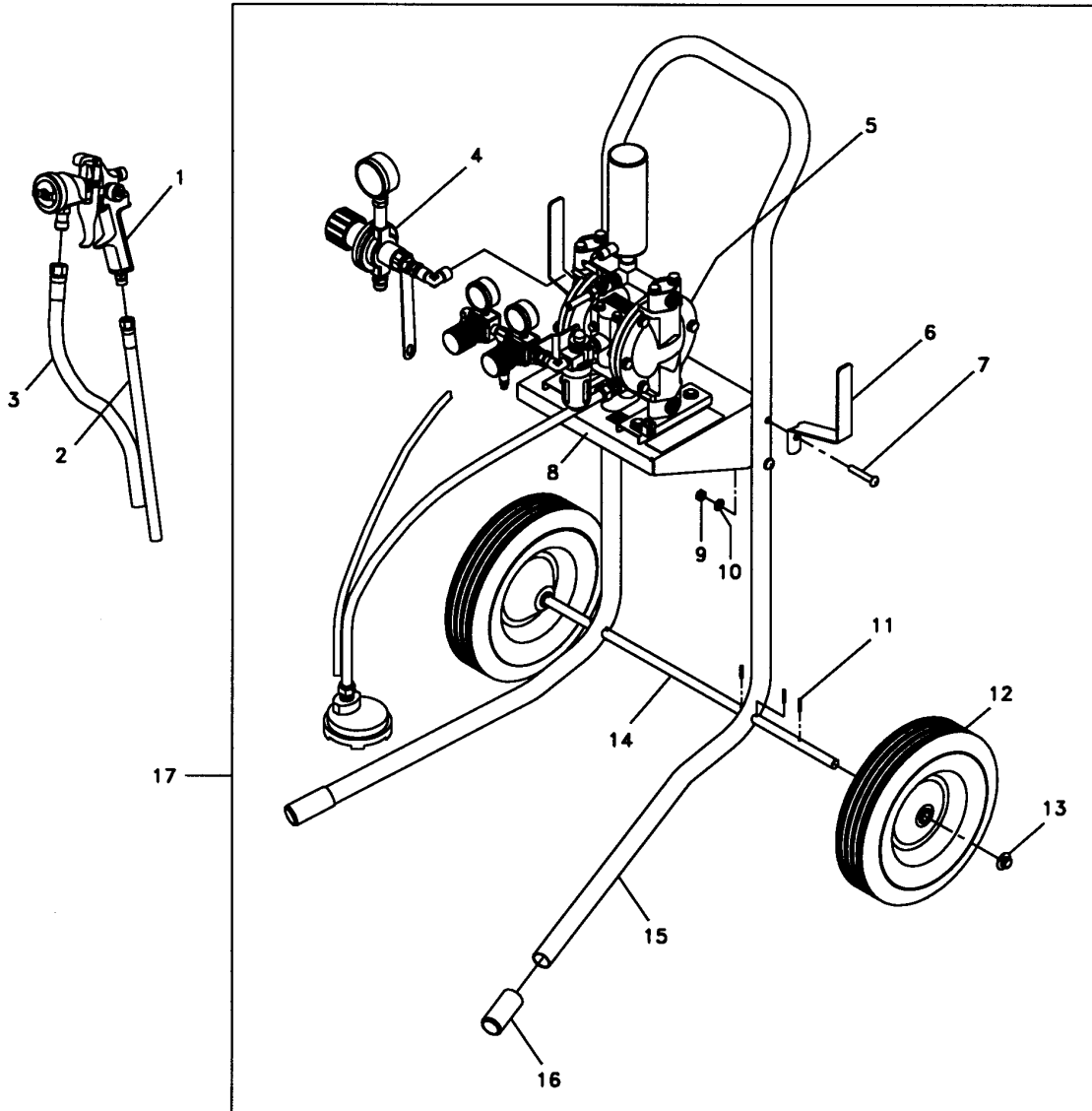


ITEM	PART No.	DESCRIPTION
	399-601	3/8" DIAPHRAGM FLUID PUMP SYSTEM
1	19-1142A	19 SERIES SPRAYGUN (NICKLE PLT'D)
	399-602	3/8" DIAPHRAGM FLUID PUMP SYSTEM
1	19C-12407	19C SERIES SPRAYGUN (BLACK TEFLON)
2	98-076-35	AIR HOSE ASSEMBLY (35' Lg.)
3	98-077-35	FLUID HOSE ASSEMBLY (35' Lg.)
4	94-628	FLUID REGULATOR ASSEMBLY
5	43-7003	3/8" DIAPHRAGM FLUID PUMP
6	98-081	WALL MOUNT BRACKET
7	43-7613	3/8" DIAPHRAGM FLUID PUMP ASSEMBLY (WITHOUT SPRAYGUN & HOSES)

NAUTILUS

3/8" DIAPHRAGM PUMP PORTABLE CART MOUNT SYSTEM

#399-701 #399-702



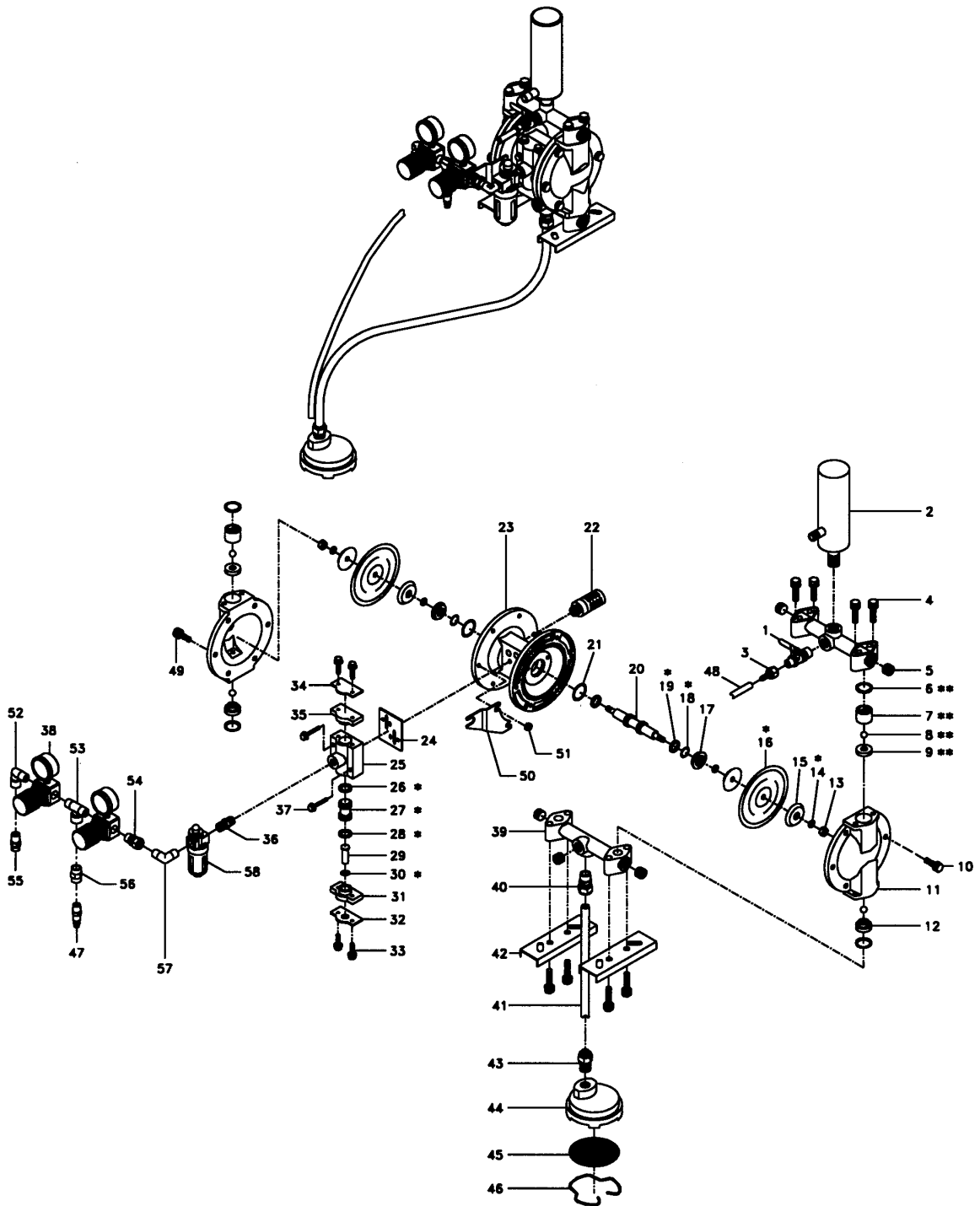
ITEM	PART No.	DESCRIPTION
	399-701	3/8" DIAPHRAGM FLUID PUMP SYSTEM
1	19-1142A	19 SERIES SPRAYGUN (NICKLE PLT'D)
	399-702	3/8" DIAPHRAGM FLUID PUMP SYSTEM
1	19C-12407	19C SERIES SPRAYGUN (BLACK TEFLON)
2	98-076-35	AIR HOSE ASSEMBLY (35' Lg.)
3	98-077-35	FLUID HOSE ASSEMBLY (35' Lg.)
4	94-628	FLUID REGULATOR ASSEMBLY
5	43-7003	3/8" DIAPHRAGM FLUID PUMP
6	98-071	HOSE BRACKET
7	UH-1380	CAP SCREW
8	98-081	WALL MOUNT BRACKET

ITEM	PART No.	DESCRIPTION
9	UH-445	HEX NUT
10	UH-417	FLAT WASHER
11	UH-746	ROLL PIN
12	UH-1365	WHEEL
13	UH-626	AXLE CAP
14	98-084	AXLE
15	98-082	CART FRAME
16	UH-1381	LEG CAP
17	43-7713	3/8" DIAPHRAGM FLUID PUMP ASSEMBLY (WITHOUT SPRAYGUN & HOSES)

NAUTILUS

3/8" DIAPHRAGM FLUID PUMP ASSEMBLY

#43-7003



Parts Listing on Following Page

NAUTILUS

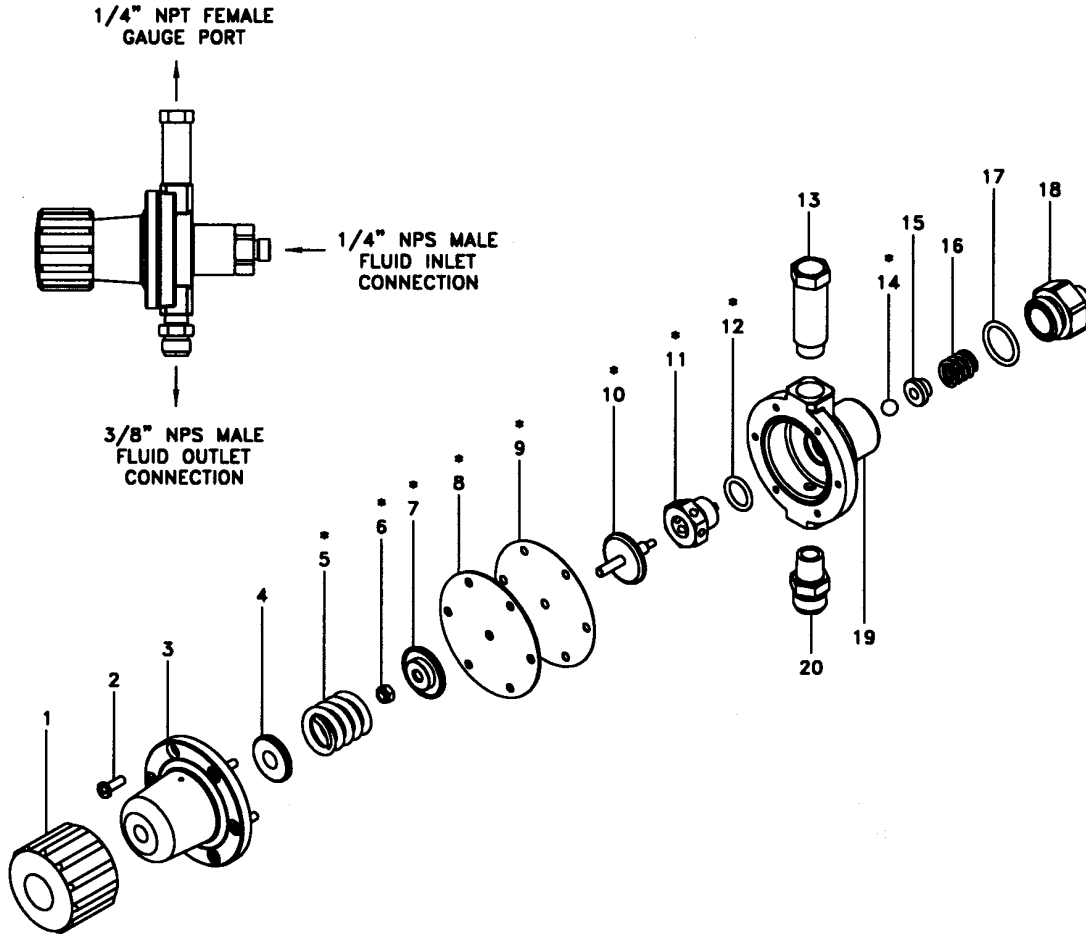
3/8" DIAPHRAGM FLUID PUMP ASSEMBLY

#43-7003

ITEM	AMT.	PART No.	DESCRIPTION	LIST
	1	94-623	3/8" DIAPHRAGM FLUID PUMP ASSEMBLY	
1	1	94-745	CUT OFF VALVE (1/4")	
2	1	94-746	ACCUMULATOR (1/4" x 3/8")	
3	1	94-747	AIR COUPLING (9mm)	
4	8	94-748	HEX HD. BOLT (M8 x 44)	
5	5	94-731	PLUG (3/8")	
6	8	94-732	O-RING (TEFLON P-21)	
7	4	94-733	BALL GUIDE	
8	4	94-734	S.S. BALL (1/2")	
9	4	94-735	RETAINING SEAT	
10	10	94-737	HEX HD. BOLT (M8 x 24)	
11	2	94-736	SLIDE COVER	
12	2	94-738	LOWER BALL SEAT	
13	2	94-726	S.S. SCREW (M8)	
14	4	94-723	O-RING (TEFLON P-8)	
15	2	94-725	PLATE	
16	2	94-724	DIAPHRAGM (TEFLON 110)	
17	2	94-720	BUSHING (BRONZE)	
18	2	94-742	O-RING	
19	2	94-716	O-RING (TEFLON P-14)	
20	1	94-717	SHAFT	
21	2	94-715	O-RING (RUBBER)	
22	1	94-714	MUFFLER	
23	1	94-713	PUMP BODY	
24	1	94-705	GASKET (RUBBER)	
25	1	94-706	DIRECTOR VALVE	
26	2	94-707	O-RING (RUBBER)	
27	1	94-709	PISTON (POLYPROPYLENE)	
28	2	94-708	O-RING (TEFLON)	
29	1	94-710	PLUNGER (S.S.)	
30	1	94-743	O-RING (RUBBER)	
31	1	94-711	GASKET (RUBBER)	
32	1	94-712	GASKET (S.S.)	
33	4	94-701	HEX HD. BOLT (M6 x 20)	
34	4	94-702	GASKET (S.S.)	
35	1	94-703	GASKET (RUBBER)	
36	1	94-749	NIPPLE	
37	2	94-704	HEX HD. BOLT (M6 x 34)	
38	2	94-750	AIR REG. W/GAUGE	
39	2	94-751	MANIFOLD	
40	2	94-752	ADAPTOR	
41	1	94-753	PAINT HOSE (1/2" PE)	
42	2	94-754	BASE RACK	
43	1	94-755	FLUID COUPLING	
44	1	94-756	SUCTION PAD	
45	1	94-757	SCREEN	
46	1	94-758	RETAINING SPRING	
47	1	94-759	Q.D. CONNECTOR	
48	1	94-744	POLYURETHANE FLUID TUBE	
49	2	94-760	HEX HD. BOLT	
50	1	94-761	SUPPORT BRACKET	
51	2	94-762	HEX NUT	
52	1	94-763	STREET ELBOW	
53	1	94-764	TEE FITTING	
54	1	94-765	SWIVEL FITTING	
55	1	94-766	CONNECTOR FITTING	
56	1	94-767	COUPLER FITTING	
57	1	94-768	90° ELBOW	
58	1	94-769	OIL MIST LUBRICATOR	
*	1	94-700	NON-WETTED SERVICE PARTS KIT	
**	1	94-741	WETTED SERVICE PARTS KIT	

NAUTILUS

#94-618 MANUAL OPERATED FLUID PRESSURE REGULATED ASSEMBLY

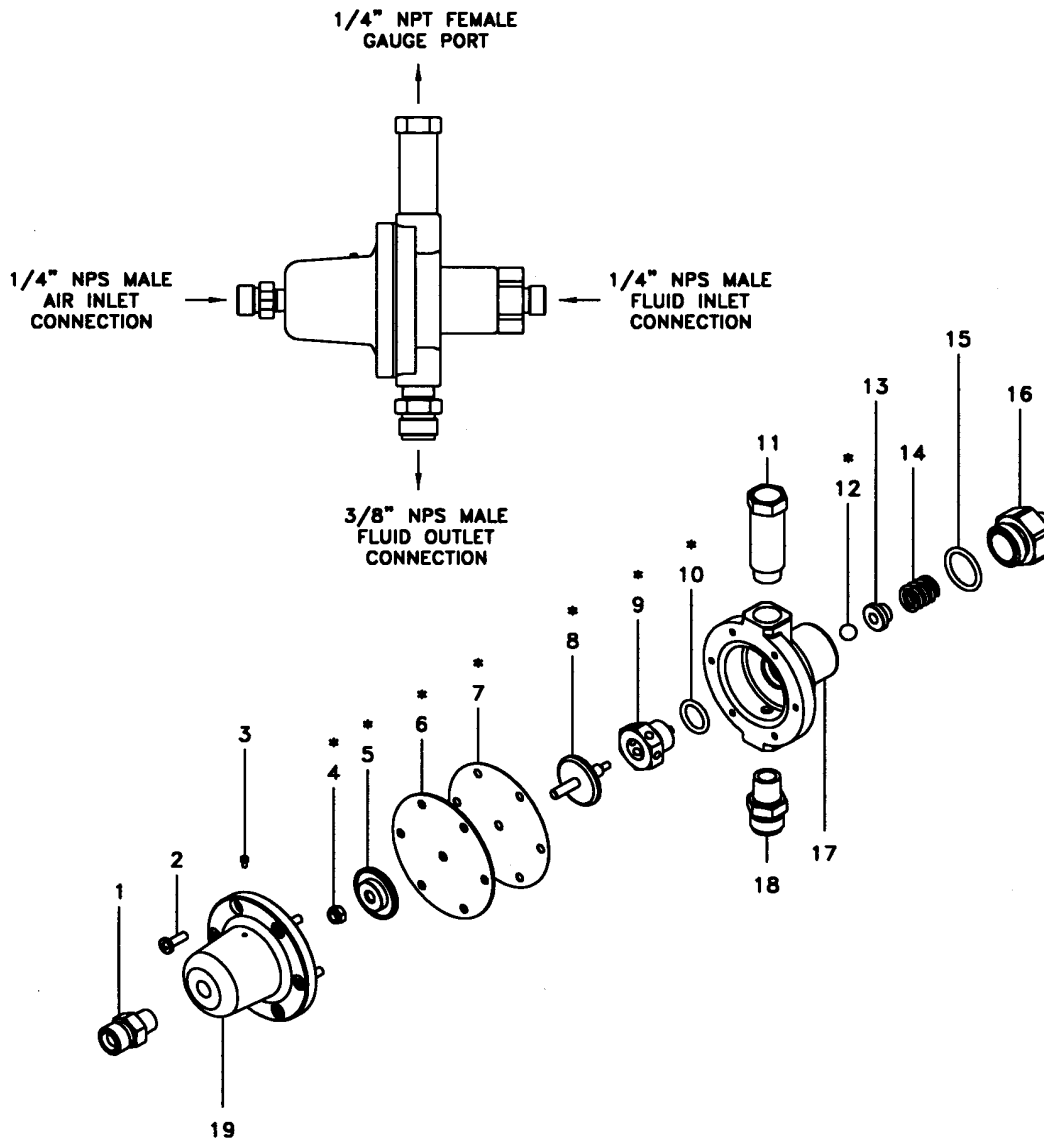


ITEM	PART No.	DESCRIPTION
	94-618	FLUID PRESSURE REGULATOR
1	94-618-1	ADJUSTING KNOB
2	94-618-2	SCREW
3	94-618-3	UPPER ADJUSTING BELL
4	94-618-4	UPPER SPRING PRESS
5	94-618-5	ADJUSTING SPRING
6	94-618-6	NUT
7	94-618-7	LOWER SPRING PRESS
8	94-618-8	UPPER DIAPHRAGM
9	94-618-9	LOWER DIAPHRAGM
10	94-618-10	SHUTTER PIN

ITEM	PART No.	DESCRIPTION
11	94-618-11	SHUTTER PIN SEAT
12	94-618-12	O-RING
13	94-618-13	EXTENSION CONNECTION
14	94-618-14	BALL
15	94-618-15	SPACER
16	94-618-16	SPRING
17	94-618-17	O-RING
18	94-618-18	INLET CONNECTION
19	94-618-19	REGULATOR BODY
20	94-618-20	OUTLET CONNECTION
*	94-619	SERVICE KIT

NAUTILUS

#94-618-P PILOT OPERATED 0-100 PSI FLUID PRESSURE REGULATOR



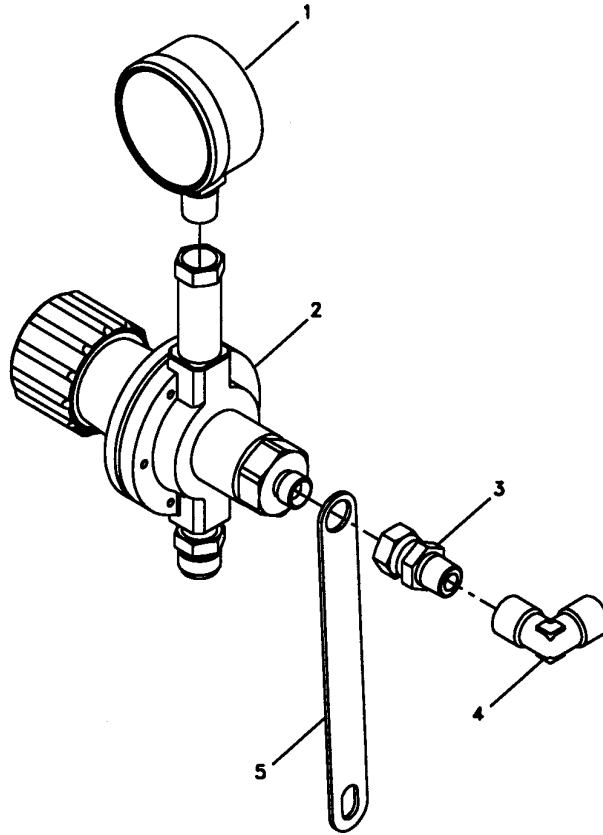
ITEM	PART No.	DESCRIPTION
	94-618-P	FLUID PRESSURE REGULATOR
1	80-932	AIR INLET FITTING
2	94-618-2	SCREW
3	UH-1401	SCREW
4	94-618-6	NUT
5	94-618-7	LOWER SPRING PRESS
6	94-618-8	UPPER DIAPHRAGM
7	94-618-9	LOWER DIAPHRAGM
8	94-618-10	SHUTTER PIN
9	94-618-11	SHUTTER PIN SEAT
10	94-618-12	O-RING

ITEM	PART No.	DESCRIPTION
11	94-618-13	EXTENSION CONNECTION
12	94-618-14	BALL
13	94-618-15	SPACER
14	94-618-16	SPRING
15	94-618-17	O-RING
16	94-618-18	INLET CONNECTION
17	94-618-19	REGULATOR BODY
18	94-618-20	OUTLET CONNECTION
19	94-618-3-P	UPPER ADJUSTING BELL
*	94-619	SERVICE KIT

NAUTILUS

#94-628

0-80 PSI FLUID REGULATOR



ITEM	PART No.	DESCRIPTION
1	80-862	AIR PRESSURE GAUGE
2	94-618	AIR PRESSURE REGULATOR
3	UH-1032	SWIVEL FITTING
4	UH-1337	90° ELBOW
5	94-620	SUPPORT BRACKET

**To order additional copies of this manual, call Accuspray
Customer Service at 1-800-618-6860
or fax your request to (440) 498-9815
Technical Service Ext. 191
Request Literature Number SM-375DP-0303**

LIMITED WARRANTY

Accuspray Application Technologies, Inc., (Accuspray), warrants all equipment manufactured by and bearing its name to be free from defects in material and workmanship on the date of sale by an authorized Accuspray distributor to the original purchaser for use. Except as expressly stated in any Accuspray Special, Extended or Limited Warranty provided in writing by Accuspray, Accuspray shall for a period of twelve months from the date of sale, repair or replace any part of the equipment proven defective. This warranty applies only when the equipment is installed, operated and maintained in accordance with Accuspray's written recommendations.

This warranty does not cover, and Accuspray shall not be liable for normal wear and tear components, any malfunction, damage, or wear caused by faulty installation, misapplication, abrasion, corrosion, inadequate or improper maintenance, negligence, accident, tampering, alteration or substitution of non-Accuspray component parts. Nor shall Accuspray be liable for malfunction, damage, or wear caused by the incompatibility with Accuspray equipment of structures, accessories, equipment or materials not supplied by Accuspray, or the improper design, manufacture, installation, operation or maintenance of structures, accessories, equipment or materials not supplied by Accuspray.

This warranty is conditional upon the prepaid return of the equipment claimed to be defective to an authorized Accuspray Service Center or to Accuspray, to verify the claimed defect. If the claimed defect is verified to be covered by this warranty, Accuspray will repair or replace free of charge any defective parts and the equipment will be returned to the original purchaser freight paid. If inspection of the equipment does not disclose a valid warranty claim, repairs if any, will be made at a reasonable charge to the purchaser. These charges may include the cost of inspection, parts, labor, and return transportation.

Disclaimer and Limitations. The terms of this warranty constitute Accuspray's sole obligation and purchaser's sole and exclusive remedy and are in lieu of any other warranties (express or implied), including warranty of merchantability or warranty of fitness for a particular purpose, or any non-contractual liabilities, including product liabilities based on negligence or strict liability. Every form of liability for direct, special or consequential damages or loss is expressly excluded and denied. In no case shall Accuspray's liability exceed the amount of the purchase price. Any action for breach of warranty must be brought within two (2) years of date of sale.

Equipment Not Covered by Accuspray Warranty. Accuspray makes no warranty, and disclaims all implied warranties of merchantability and fitness for a particular purpose with respect to accessories, equipment, materials, or components sold but not manufactured by Accuspray. These items sold but not manufactured by Accuspray (such as electric motors, switches, hose, etc.), are subject to the warranty, if any, of their manufacturer. Accuspray will provide purchaser with reasonable assistance in making any claim for breach of these warranties.

Accuspray is a registered trademark of
Accuspray Application Technologies, Inc.

All other products named in this publication are either trademarks or registered
Trademarks of their respective owners.

